

## Anti-Ferritin Heavy Chain Rabbit pAb



WL05360

For Research Use Only. Not For Use In Diagnostic Procedures

## Product Information

<b>Product name</b>	Anti-Ferritin Heavy Chain Rabbit pAb		
<b>Source</b>	Rabbit		
<b>Species reactivity</b>	Human, Mouse, Rat		
<b>Tested applications</b>	WB	1:500-1:1000	
	IF	1:50-1:200	
<b>Cellular localization</b>	Cytoplasm, extracellular exosome, extracellular region.		
<b>Pack size</b>	50/100/200/500/1000μl		
<b>Storage</b>	Store at -20°C. <b>Avoid freeze/thaw cycles.</b>		
<b>Storage buffer</b>	Supplied in 20 mM phosphate (pH 7.5), 150 mM NaCl, 100 μg/ml		
	BSA, 50% glycerol and less than 0.02% sodium azide		

## General Information

**Background**

The major intracellular iron storage protein in prokaryotes and eukaryotes. It is composed of 24 subunits of the heavy and light ferritin chains. Variation in ferritin subunit composition may affect the rates of iron uptake and release in different tissues. A major function of ferritin is the storage of iron in a soluble and nontoxic state. Defects in ferritin proteins are associated with several neurodegenerative diseases.

**Immunogen**

Polyclonal antibody is produced by immunizing animals with a synthetic peptide of Ferritin Heavy Chain.

**Purification**

Polyclonal antibody was purified by immunogen affinity chromatography.

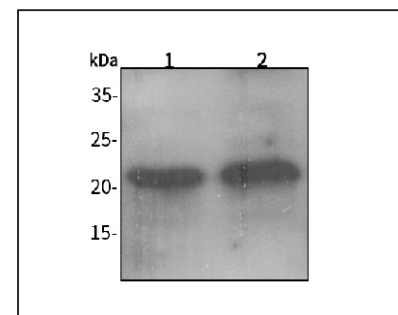
## Anti-Ferritin Heavy Chain Rabbit pAb



WL05360

For Research Use Only. Not For Use In Diagnostic Procedures

## Product Images



## Western blot-Anti-Ferritin Heavy Chain pAb

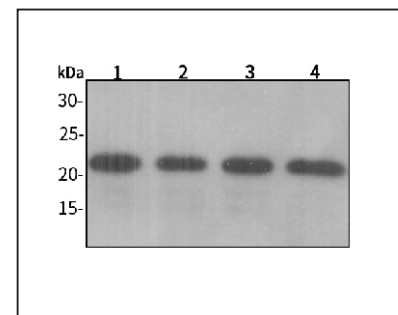
Lane 1: Human SW480 cell lysate

Lane 2: Human A549 cell lysate

All lanes: Anti-Ferritin Heavy Chain at 1:1000 dilution  
Lysates/proteins at 20-50 μg per lane.

Predicted band size: 21 kDa

Observed band size: 21 kDa



## Western blot-Anti-Ferritin Heavy Chain pAb

Lane 1: Mouse heart tissue lysate

Lane 2: Mouse liver tissue lysate

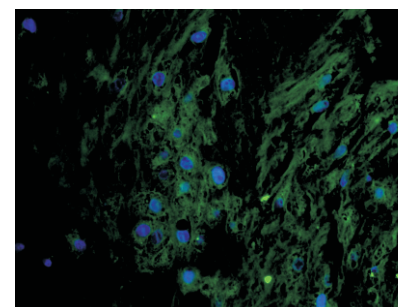
Lane 3: Rat lung tissue lysate

Lane 4: Rat colon tissue lysate

All lanes: Anti-Ferritin Heavy Chain at 1:1000 dilution  
Lysates/proteins at 20-50 μg per lane.

Predicted band size: 21 kDa

Observed band size: 21 kDa



## Immunofluorescence-Anti-Ferritin Heavy Chain pAb

Immunofluorescence analysis of paraffin-embedded human placenta using anti-Ferritin Heavy Chain Rabbit Antibody at 1:100 dilution.  
Perform heat mediated antigen retrieval with Tris-EDTA buffer pH 9.0