

## Anti-PI3 Kinase p85 Rabbit pAb



WL02240

For Research Use Only. Not For Use In Diagnostic Procedures

## Product Information

<b>Product name</b>	Anti-PI3 Kinase p85 Rabbit pAb	
<b>Source</b>	Rabbit	
<b>Species reactivity</b>	Human, Mouse, Rat	
<b>Tested applications</b>	WB	1:500-1:1000
	IHC	1:100-1:400
	IF	1:200

**Cellular localization** Cell junction ,Cytoplasm ,Membrane.Nucleus

**Pack size** 50/100/200/500/1000μl

**Storage** Store at -20°C. **Avoid freeze/thaw cycles.**

**Storage buffer** Supplied in 20 mM phosphate (pH 7.5), 150 mM NaCl, 100 μg/ml BSA, 50% glycerol and less than 0.02% sodium azide

## General Information

**Background** Phosphatidylinositol 3-kinase (PI 3-kinase) is composed of p85 and p110 subunits. p85 lacks PI 3-kinase activity and acts as an adapter, coupling p110 to activated protein tyrosine kinase. Various isoforms of the catalytic subunit (p110α, p110β, p110γ, and p110δ) have been isolated, and the regulatory subunits that associate with p110α, p110β, and p110δ are p85α and p85β. In contrast, p110γ associates with a p101 regulatory subunit that is unrelated to p85. Furthermore, p110γ is activated by βγ subunits of heterotrimeric G proteins.

**Immunogen** Polyclonal antibody is produced by immunizing animals with a synthetic peptide of PI3 Kinase p85.

**Purification** Polyclonal antibody was purified by immunogen affinity chromatography.

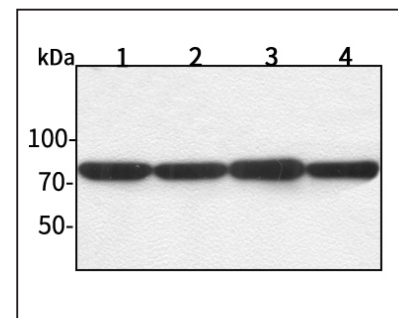
## Anti-PI3 Kinase p85 Rabbit pAb



WL02240

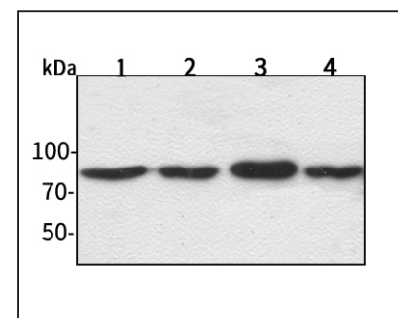
For Research Use Only. Not For Use In Diagnostic Procedures

## Product Images



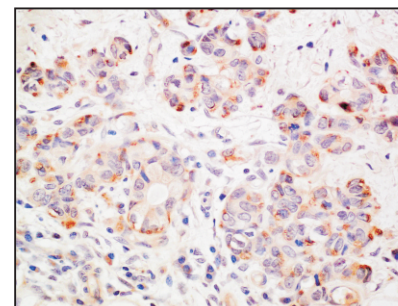
Western blot-Anti-PI3 Kinase p85 pAb

Lane 1: Human HepG2 cell lysate  
 Lane 2: Human Hela cell lysate  
 Lane 3: Human BGC-823 cell lysate  
 Lane 4: Human MGC-803 cell lysate  
 All lanes: Anti-PI3 Kinase p85 at 1:1000 dilution  
 Lysates/proteins at 20-50 μg per lane.  
 Predicted band size: 85 kDa  
 Observed band size: 85 kDa



Western blot-Anti-PI3 Kinase p85 pAb

Lane 1: Mouse brain tissue lysate  
 Lane 2: Mouse lung tissue lysate  
 Lane 3: Rat kidney tissue lysate  
 Lane 4: Rat heart tissue lysate  
 All lanes: Anti-PI3 Kinase p85 at 1:1000 dilution  
 Lysates/proteins at 20-50 μg per lane.  
 Predicted band size: 85 kDa  
 Observed band size: 85 kDa



Immunohistochemistry-Anti-PI3 kinase p85 pAb

Immunohistochemical analysis of paraffin-embedded human colon cancer using anti-PI3 kinase p85 Rabbit Antibody at 1:200 dilution. Perform heat mediated antigen retrieval with Tris-EDTA buffer pH 9.0

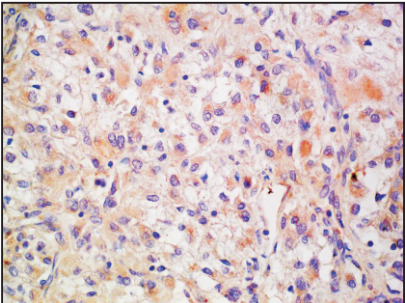
Anti-PI3 Kinase p85 Rabbit pAb



For Research Use Only. Not For Use In Diagnostic Procedures

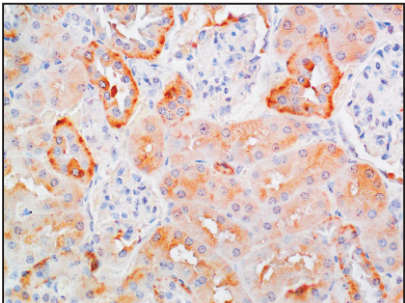
WL02240

Product Information



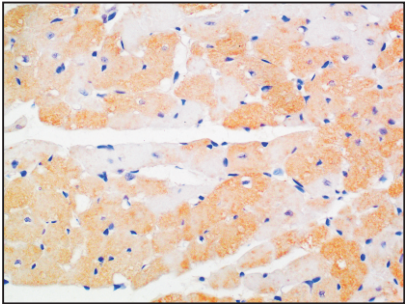
Immunohistochemistry-Anti-PI3 kinase p85 pAb

Immunohistochemical analysis of paraffin-embedded human stomach cancer using anti-PI3 kinase p85 Rabbit Antibody at 1:200 dilution. Perform heat mediated antigen retrieval with Tris-EDTA buffer pH 9.0



Immunohistochemistry-Anti-PI3 kinase p85 pAb

Immunohistochemical analysis of paraffin-embedded mouse kidney using anti-PI3 kinase p85 Rabbit Antibody at 1:200 dilution. Perform heat mediated antigen retrieval with Tris-EDTA buffer pH 9.0



Immunohistochemistry-Anti-PI3 kinase p85 pAb

Immunohistochemical analysis of paraffin-embedded rat heart using anti-PI3 kinase p85 Rabbit Antibody at 1:200 dilution. Perform heat mediated antigen retrieval with Tris-EDTA buffer pH 9.0

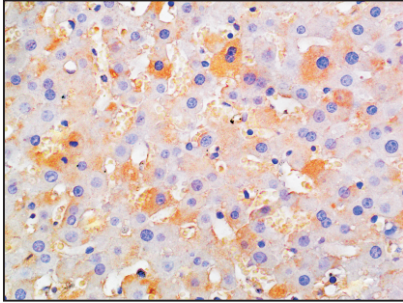
Anti-PI3 Kinase p85 Rabbit pAb



For Research Use Only. Not For Use In Diagnostic Procedures

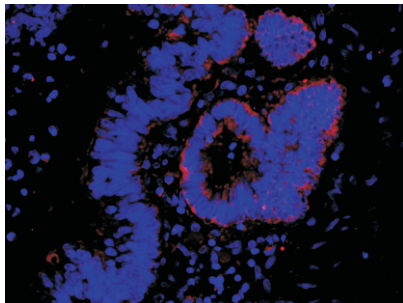
WL02240

Product Images



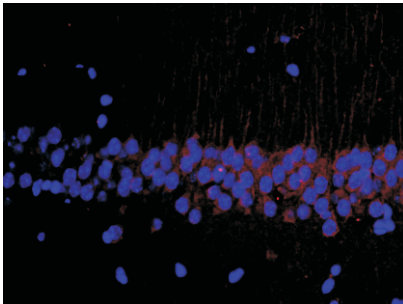
Immunohistochemistry-Anti-PI3 kinase p85 pAb

Immunohistochemical analysis of paraffin-embedded rat liver using anti-PI3 kinase p85 Rabbit Antibody at 1:200 dilution. Perform heat mediated antigen retrieval with Tris-EDTA buffer pH 9.0



Immunofluorescence-Anti-PI3 kinase p85 pAb

Immunofluorescence analysis of paraffin-embedded human rectum cancer using anti-PI3 kinase p85 Rabbit Antibody at 1:200 dilution. Perform heat mediated antigen retrieval with Tris-EDTA buffer pH 9.0



Immunofluorescence-Anti-PI3 kinase p85 pAb

Immunofluorescence analysis of paraffin-embedded mouse brain using anti-PI3 kinase p85 Rabbit Antibody at 1:200 dilution. Perform heat mediated antigen retrieval with Tris-EDTA buffer pH 9.0

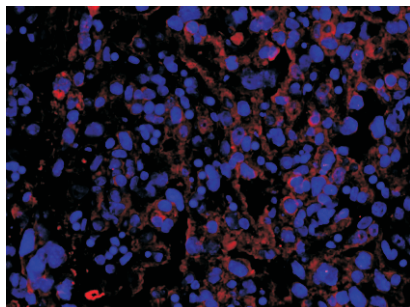
## Anti-PI3 Kinase p85 Rabbit pAb



For Research Use Only. Not For Use In Diagnostic Procedures

WL02240

### Product Information



#### Immunofluorescence-Anti-PI3 kinase p85 pAb

Immunofluorescence analysis of paraffin-embedded mouse placenta using anti-PI3 kinase p85 Rabbit Antibody at 1:200 dilution.

Perform heat mediated antigen retrieval with Tris-EDTA buffer pH 9.0