

Anti-TAU Rabbit pAb



WL03184

For Research Use Only. Not For Use In Diagnostic Procedures

Product Information

Product name	Anti-TAU Rabbit pAb		
Source	Rabbit		
Species reactivity	Human, Mouse, Rat		
Tested applications	Western blot	1:1000-1:2000	
	Immunohistochemistry	1:100-1:400	
	Immunofluorescence	1:100-1:400	
Molecular Wt.	50-80 kDa		
Cellular localization	Cytoplasm. Cell membrane. Cytoplasm. Cell projection.		
Pack size	50/100/200/500/1000μl		
Storage	Store at -20°C. Avoid freeze/thaw cycles.		
Storage buffer	Supplied in 20 mM phosphate (pH 7.5), 150 mM NaCl, 100 μg/ml		
	BSA, 50% glycerol and less than 0.02% sodium azide		

General Information

Background	<p>Tau is a heterogeneous microtubule-associated protein that promotes and stabilizes microtubule assembly, especially in axons. Phosphorylation decreases the ability of tau to bind to microtubules. Neurofibrillary tangles are a major hallmark of Alzheimer's disease; these tangles are bundles of paired helical filaments composed of hyperphosphorylated tau. Tau is found to be the major component of the paired helical filaments (PHFs) found in the brains of patients with Alzheimer disease (AD). Tau is hyperphosphorylated in PHFs, and specific phosphorylation sites have been implicated in the loss of Taus association with the membrane cortex during AD disease state.</p>
Immunogen	Polyclonal antibody is produced by immunizing animals with a synthetic peptide of TAU.
Purification	Polyclonal antibody was purified by Protein A affinity chromatography.

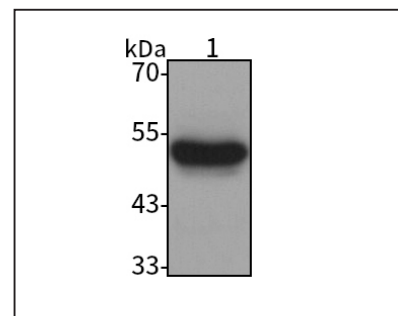
Anti-TAU Rabbit pAb



WL03184

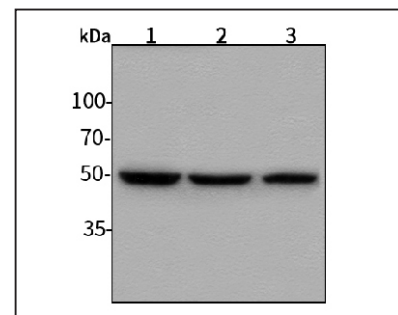
For Research Use Only. Not For Use In Diagnostic Procedures

Product Images



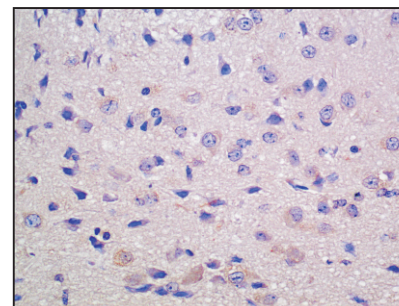
Western blot-Anti-TAU pAb

Lane 1: Human SH-SY5Y cell lysate 30μg
 Separation gel: 10% polyacrylamide
 Electrophoresis: 100V, 4°C, 3h
 Transmembrane: 100V, 4°C, 1h
 Blocking: 5% w/v nonfat dry milk, 1× TBST, at RT with gentle shaking
 Primary antibody: 1:1000 in blocking buffer, 4°C, overnight
 Secondary antibody (WLA023a) : 1:5000-1:10000, 45min
 Detection: ECL, 30s-2min



Western blot-Anti-TAU pAb

Lane 1: Mouse cerebellum tissue lysate 30μg
 Lane 2: Mouse ridge tissue lysate 30μg
 Lane 3: Rat brain tissue lysate 30μg
 Separation gel: 10% polyacrylamide
 Electrophoresis: 100V, 4°C, 3h
 Transmembrane: 100V, 4°C, 1h
 Blocking: 5% w/v nonfat dry milk, 1× TBST, at RT with gentle shaking
 Primary antibody: 1:1000 in blocking buffer, 4°C, overnight
 Secondary antibody (WLA023a) : 1:5000-1:10000, 45min
 Detection: ECL, 30s-2min



Immunohistochemistry-Anti-TAU pAb

Sample: Mouse brain tissue
 Antigen retrieval: pH 9.0 Tris-EDTA buffer
 Primary antibody: 1:200, 4°C, overnight
 Secondary antibody-Biotin: 1:150, 37°C, 1h
 Streptavidin-HRP: 1:200, 37°C, 30min
 Color Developing: DAB

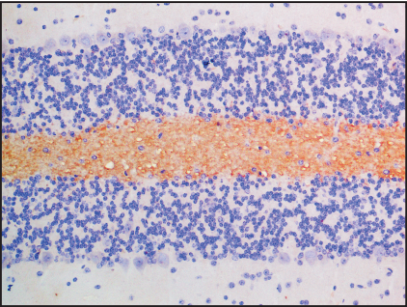
Anti-TAU Rabbit pAb



For Research Use Only. Not For Use In Diagnostic Procedures

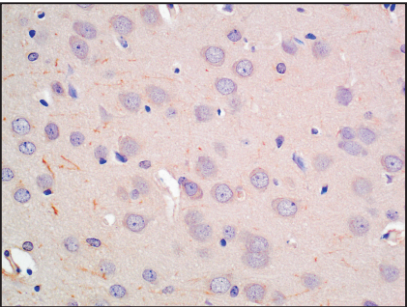
WL03184

Product Information



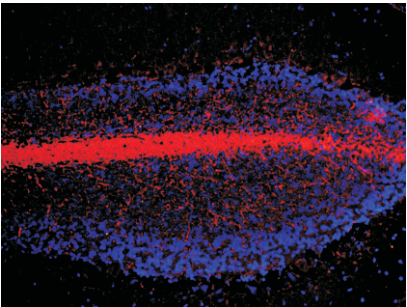
Immunohistochemistry-Anti-TAU pAb

Sample: Mouse cerebellum tissue
Antigen retrieval: pH 9.0 Tris-EDTA buffer
Primary antibody: 1:200, 4°C, overnight
Secondary antibody-Biotin: 1:150, 37°C, 1h
Streptavidin-HRP: 1:200, 37°C, 30min
Color Developing: DAB



Immunohistochemistry-Anti-TAU pAb

Sample: Rat brain tissue
Antigen retrieval: pH 9.0 Tris-EDTA buffer
Primary antibody: 1:200, 4°C, overnight
Secondary antibody-Biotin: 1:150, 37°C, 1h
Streptavidin-HRP: 1:200, 37°C, 30min
Color Developing: DAB



Immunofluorescence-Anti-TAU pAb

Sample: Rat cerebellum tissue
Primary antibody: 1:200, 4°C, overnight
Secondary antibody-CY3: 1:200, at room temperature, 1h