

Anti-SHP1 Rabbit pAb



WL01533

For Research Use Only. Not For Use In Diagnostic Procedures

Product Information

Product name	Anti-SHP1 Rabbit pAb
Source	Rabbit
Species reactivity	Human, Mouse, Rat
Tested applications	WB 1:500-1:1000
Cellular localization	Secreted and Cell membrane
Pack size	50/100/200/500/1000µl
Storage	Store at -20°C. Avoid freeze/thaw cycles.
Storage buffer	Supplied in 20 mM phosphate (pH 7.5), 150 mM NaCl, 100 µg/ml BSA, 50% glycerol and less than 0.02% sodium azide

General Information

Background	SHP-1 (PTPN6) is a non-receptor protein tyrosine phosphatase that is expressed primarily in hematopoietic cells. PTPs are known to be signaling molecules that regulate a variety of cellular processes including cell growth, differentiation, mitotic cycle, and oncogenic transformation. SHP-1 removes phosphates from target proteins to downregulate several tyrosine kinase-regulated pathways. In hematopoietic cells, the amino-terminal SH2 domain of SHP-1 binds to tyrosine phosphorylated erythropoietin receptors (EpoR) to negatively regulate hematopoietic growth. Because SHP-1 downregulates various proliferation pathways, SHP-1 is considered a potential tumor suppressor and angiogenesis regulator.
Immunogen	Polyclonal antibody is produced by immunizing animals with a synthetic peptide of SHP1.
Purification	Polyclonal antibody was purified by immunogen affinity chromatography.

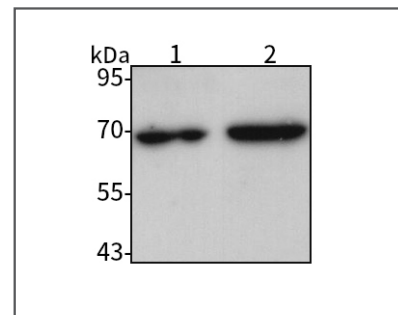
Anti-SHP1 Rabbit pAb



WL01533

For Research Use Only. Not For Use In Diagnostic Procedures

Product Images



Western blot-Anti-SHP1 pAb

Lane 1: Human Raji cell lysate

Lane 2: Human THP-1 cell lysate

All lanes: Anti-SHP1 at 1:1000 dilution

Lysates/proteins at 20-50 µg per lane.

Predicted band size : 68 kDa

Observed band size : 68 kDa