

## Product Datasheet

### Anti-P-MEK1/2 (S218+S222) Rabbit pAb



WLA0177

For Research Use Only. Not For Use In Diagnostic Procedures

## Product Information

<b>Product name</b>	Anti-P-MEK1/2 (S218+S222) Rabbit pAb	
<b>Source</b>	Rabbit	
<b>Species reactivity</b>	Human, Mouse, Rat	
<b>Tested applications</b>	WB	1:1000-1:2000
	IHC,IF	1:200-1:500
<b>Cellular localization</b>	Cytoplasm. Membrane. Nucleus	
<b>Pack size</b>	50/100/200/500/1000μl	
<b>Storage</b>	Store at -20°C. <b>Avoid freeze/thaw cycles.</b>	
<b>Storage buffer</b>	Supplied in 20 mM phosphate (pH 7.5), 150 mM NaCl, 100 μg/ml	
	BSA, 50% glycerol and less than 0.02% sodium azide	

## General Information

<b>Background</b>	MAP2K1 and MAP2K2 are protein kinases with dual specificity, belonging to the MAP kinase kinase family. MAP kinases, also known as extracellular signal regulated kinases (ERKs), serve as integration points for various biochemical signals. This protein kinase is located upstream of MAP kinase and stimulates the enzymatic activity of MAP kinase under a wide range of intracellular and extracellular signals. As a key component of the MAP kinase signaling pathway, this kinase is involved in many cellular processes such as proliferation, differentiation, transcriptional regulation, and development.
<b>Immunogen</b>	Polyclonal antibody is produced by immunizing animals with a synthetic peptide of P-MEK1/2 (S218+S222) .
<b>Purification</b>	Polyclonal antibody was purified by Protein A affinity chromatography.

## Product Datasheet

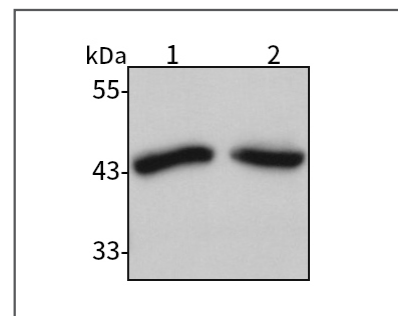
### Anti-P-MEK1/2 (S218+S222) Rabbit pAb



WLA0177

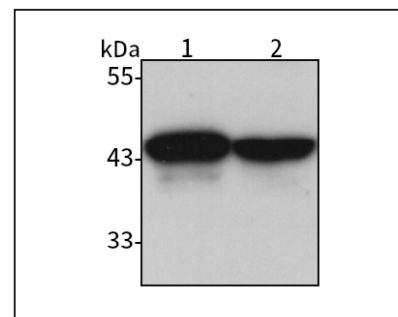
For Research Use Only. Not For Use In Diagnostic Procedures

## Product Images



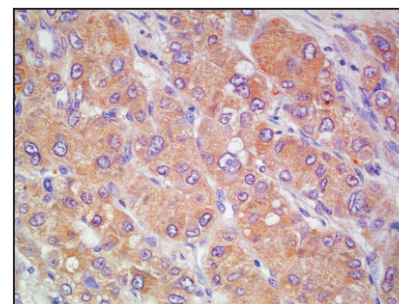
**Western blot-Anti-P-MEK1/2 (S218+S222) pAb**

**Lane 1:** Human Hela cell lysate  
**Lane 2:** Human THP-1 cell lysate  
**All lanes:** Anti-P-MEK1/2 (S218+S222) at 1:1000 dilution  
Lysates/proteins at 20-50 μg per lane  
Predicted band size: 44 kDa  
Observed band size: 44 kDa



**Western blot-Anti-P-MEK1/2 (S218+S222) pAb**

**Lane 1:** Mouse lung tissue lysate  
**Lane 2:** Rat liver tissue lysate  
**All lanes:** Anti-P-MEK1/2 (S218+S222) at 1:1000 dilution  
Lysates/proteins at 20-50 μg per lane  
Predicted band size: 44 kDa  
Observed band size: 44 kDa



**Immunohistochemistry-Anti-P-MEK1/2 (S218+S222) pAb**

Immunohistochemical analysis of paraffin-embedded human liver cancer using anti-P-MEK1/2 (S218+S222) Rabbit Antibody at 1:500 dilution. Perform heat mediated antigen retrieval with Tris-EDTA buffer pH 9.0

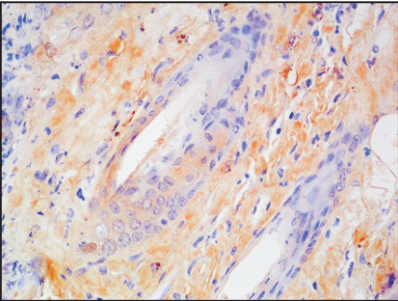
Anti-P-MEK1/2 (S218+S222) Rabbit pAb



For Research Use Only. Not For Use In Diagnostic Procedures

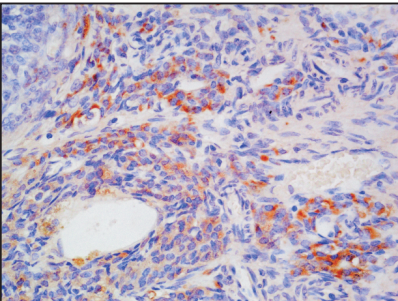
WLA0177

Product Information



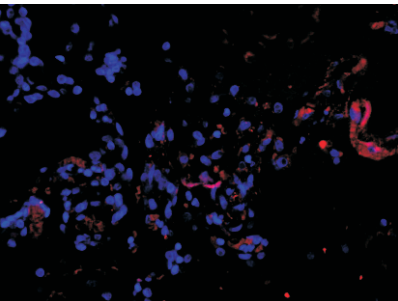
Immunohistochemistry-Anti-P-MEK1/2 (S218+S222) pAb

Immunohistochemical analysis of paraffin-embedded mouse skin using anti-P-MEK1/2 (S218+S222) Rabbit Antibody at 1:500 dilution.  
Perform heat mediated antigen retrieval with Tris-EDTA buffer pH 9.0



Immunohistochemistry-Anti-P-MEK1/2 (S218+S222) pAb

Immunohistochemical analysis of paraffin-embedded rat ovary using anti-P-MEK1/2 (S218+S222) Rabbit Antibody at 1:500 dilution.  
Perform heat mediated antigen retrieval with Tris-EDTA buffer pH 9.0



Immunofluorescence-Anti-P-MEK1/2 (S218+S222) pAb

Immunofluorescence analysis of paraffin-embedded human lung cancer using anti-P-MEK1/2 (S218+S222) Rabbit Antibody at 1:500 dilution.  
Perform heat mediated antigen retrieval with Tris-EDTA buffer pH 9.0

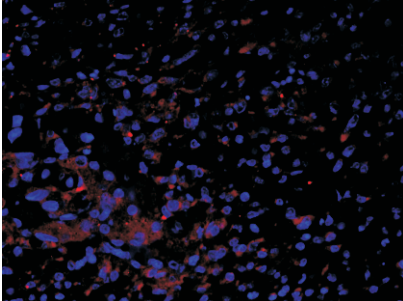
Anti-P-MEK1/2 (S218+S222) Rabbit pAb



For Research Use Only. Not For Use In Diagnostic Procedures

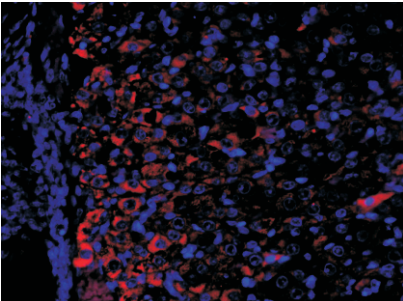
WLA0177

Product Information



Immunofluorescence-Anti-P-MEK1/2 (S218+S222) pAb

Immunofluorescence analysis of paraffin-embedded mouse placenta using anti-P-MEK1/2 (S218+S222) Rabbit Antibody at 1:500 dilution.  
Perform heat mediated antigen retrieval with Tris-EDTA buffer pH 9.0



Immunofluorescence-Anti-P-MEK1/2 (S218+S222) pAb

Immunofluorescence analysis of paraffin-embedded rat ovary using anti-P-MEK1/2 (S218+S222) Rabbit Antibody at 1:500 dilution.  
Perform heat mediated antigen retrieval with Tris-EDTA buffer pH 9.0