

Anti-p-MLKL(Ser345) Rabbit pAb



WLA0567

For Research Use Only. Not For Use In Diagnostic Procedures

Product Information

Product name Anti-p-MLKL(Ser345) Rabbit pAb

Source Rabbit

Species reactivity Human, Mouse, Rat

Tested applications

WB	1:500-1:1000
IHC, IF	1:100-1:200

Cellular localization Cell membrane, Cytoplasm, Nucleus.

Pack size 50/100/200/500/1000μl

Storage Store at -20°C. **Avoid freeze/thaw cycles.**

Storage buffer Supplied in 20 mM phosphate (pH 7.5), 150 mM NaCl, 100 μg/ml BSA, 50% glycerol and less than 0.02% sodium azide

General Information

Background MLKL belongs to the protein kinase superfamily. The protein encoded by this gene contains a protein kinase-like domain; however, it is considered to lack protein kinase activity. This protein plays a crucial role in tumor necrosis factor (TNF)-induced necroptosis, a programmed cell death process, by interacting with receptor-interacting protein 3 (RIP3), which is a key signaling molecule in the necroptosis pathway. Upon phosphorylation and activation by RIPK3, it forms a homotrimer, localizes to the plasma membrane, and executes programmed necrosis, characterized by calcium influx and plasma membrane damage.

Immunogen Polyclonal antibody is produced by immunizing animals with a synthetic peptide of p-MLKL(Ser345).

Purification Polyclonal antibody was purified by immunogen affinity chromatography.

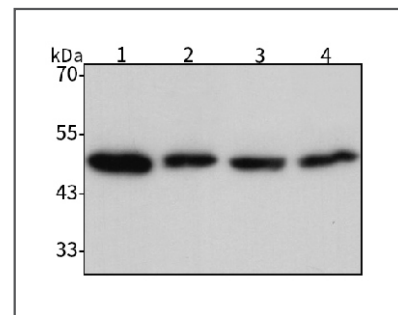
Anti-p-MLKL(Ser345) Rabbit pAb



WLA0567

For Research Use Only. Not For Use In Diagnostic Procedures

Product Images



Western blot-Anti-p-MLKL(Ser345) pAb

Lane 1: Human Hela cell lysate

Lane 2: Human A2780 cell lysate

Lane 3: Human Raji cell lysate

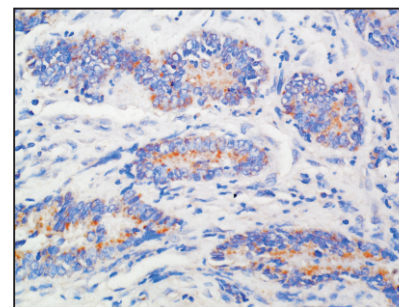
Lane 4: Human LP-1 cell lysate

All lanes: Anti-p-MLKL(Ser345) at 1:1000 dilution

Lysates/proteins at 20-50 μg per lane

Predicted band size: 54 kDa

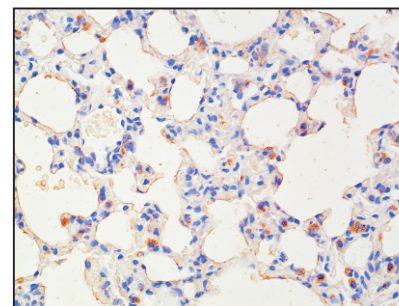
Observed band size: 45 kDa



Immunohistochemistry-Anti-p-MLKL(Ser345) pAb

Immunohistochemical analysis of paraffin-embedded human pancreas cancer using anti-p-MLKL(Ser345) Rabbit Antibody at 1:100 dilution.

Perform heat mediated antigen retrieval with Tris-EDTA buffer pH 9.0



Immunohistochemistry-Anti-p-MLKL(Ser345) pAb

Immunohistochemical analysis of paraffin-embedded rat lung using anti-p-MLKL(Ser345) Rabbit Antibody at 1:100 dilution.

Perform heat mediated antigen retrieval with Tris-EDTA buffer pH 9.0

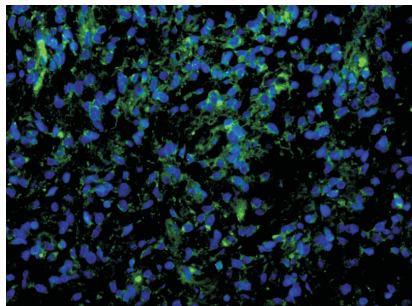
Anti-p-MLKL(Ser345) Rabbit pAb



WLA0567

For Research Use Only. Not For Use In Diagnostic Procedures

Product Information



Immunofluorescence-Anti-p-MLKL(Ser345) pAb

Immunofluorescence analysis of paraffin-embedded human brain glioma using anti-p-MLKL(Ser345) Rabbit Antibody at 1:100 dilution.

Perform heat mediated antigen retrieval with Tris-EDTA buffer pH 9.0