

Anti-SP1 Rabbit pAb



WL02251

For Research Use Only. Not For Use In Diagnostic Procedures

Product Information

Product name	Anti-SP1 Rabbit pAb	
Source	Rabbit	
Species reactivity	Human, Mouse, Rat	
Tested applications	WB	1:1000-1:2000
	IHC	1:100-1:200
	IF	1:500
Cellular localization	Nucleus. Cytoplasm	
Pack size	50/100/200/500/1000μl	
Storage	Store at -20°C. Avoid freeze/thaw cycles.	
Storage buffer	Supplied in 20 mM phosphate (pH 7.5), 150 mM NaCl, 100 μg/ml	
	BSA, 50% glycerol and less than 0.02% sodium azide	

General Information

Background	Specificity protein 1 (SP1) is a ubiquitously expressed transcription factor belonging to the family of C2H2-type zinc finger containing DNA-binding proteins. SP1 binds GC-rich motifs with high affinity and regulates the expression of numerous mammalian genes. Although SP1 has been described as a transcriptional activator, it can also act as a repressor. SP1 has been implicated in the expression of numerous genes involved in many aspects of cellular life such as metabolism, cell growth, differentiation, angiogenesis and apoptosis regulation. Glycosylation of SP1 following insulin treatment leads to increased nuclear localization, while glucagon treatment increases cytoplasmic SP1 levels.
Immunogen	Polyclonal antibody is produced by immunizing animals with a synthetic peptide of SP1.
Purification	Polyclonal antibody was purified by Protein A affinity chromatography.

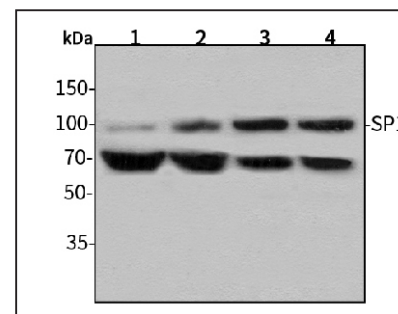
Anti-SP1 Rabbit pAb



WL02251

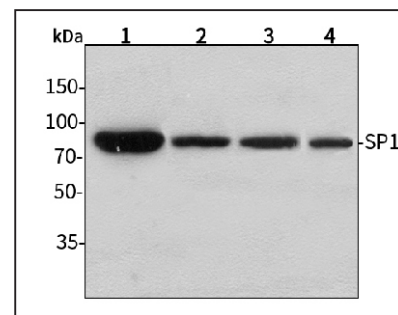
For Research Use Only. Not For Use In Diagnostic Procedures

Product Images



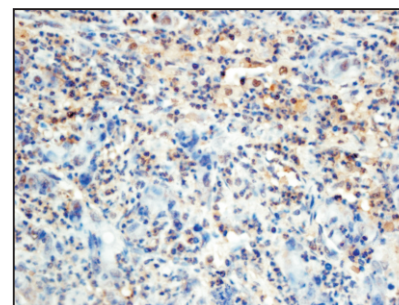
Western blot-Anti-SP1 pAb

Lane 1: Human HepG2 cell lysate
 Lane 2: Human Hela cell lysate
 Lane 3: Human BGC-823 cell lysate
 Lane 4: Human MGC-803 cell lysate
 All lanes: Anti-SP1 at 1:1000 dilution
 Lysates/proteins at 20-50 μg per lane.
 Predicted band size: 81 kDa
 Observed band size: 90-106 kDa



Western blot-Anti-SP1 pAb

Lane 1: Mouse lung tissue lysate
 Lane 2: Mouse brain tissue lysate
 Lane 3: Rat cerebellum tissue lysate
 Lane 4: Rat skin tissue lysate
 All lanes: Anti-SP1 at 1:1000 dilution
 Lysates/proteins at 20-50 μg per lane.
 Predicted band size: 81 kDa
 Observed band size: 90-106 kDa



Immunohistochemistry-Anti-SP1 pAb

Immunohistochemical analysis of paraffin-embedded human colon cancer using anti-SP1 Rabbit Antibody at 1:200 dilution.
 Perform heat mediated antigen retrieval with Tris-EDTA buffer pH 9.0

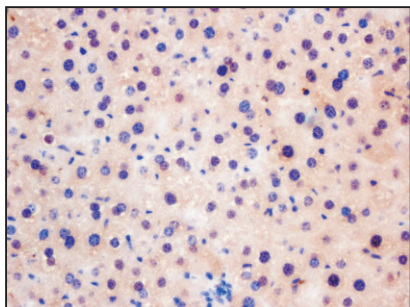
Anti-SP1 Rabbit pAb



For Research Use Only. Not For Use In Diagnostic Procedures

WL02251

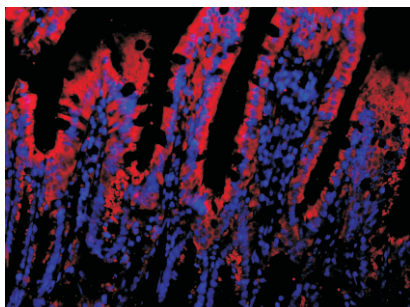
Product Information



Immunohistochemistry-Anti-SP1 pAb

Immunohistochemical analysis of paraffin-embedded mouse liver using anti-SP1 Rabbit Antibody at 1:200 dilution.

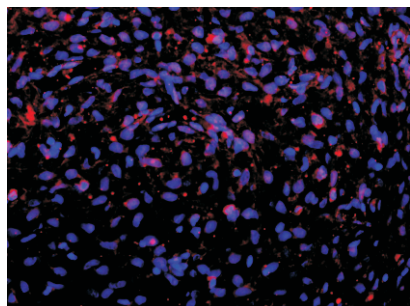
Perform heat mediated antigen retrieval with Tris-EDTA buffer pH 9.0



Immunofluorescence-Anti-SP1 pAb

Immunofluorescence analysis of paraffin-embedded mouse colon using anti-SP1 Rabbit Antibody at 1:500 dilution.

Perform heat mediated antigen retrieval with Tris-EDTA buffer pH 9.0



Immunofluorescence-Anti-SP1 pAb

Immunofluorescence analysis of paraffin-embedded rat uterus using anti-SP1 Rabbit Antibody at 1:500 dilution.

Perform heat mediated antigen retrieval with Tris-EDTA buffer pH 9.0