

Anti-Cyclin B1 Rabbit pAb



WL01760

For Research Use Only. Not For Use In Diagnostic Procedures

Product Information

Product name	Anti-Cyclin B1 Rabbit pAb		
Source	Rabbit		
Species reactivity	Human, Mouse, Rat		
Tested applications	WB	1:1000-1:2000	
Pack size	50/100/200/500/1000μl		
Storage	Store at -20°C. Avoid freeze/thaw cycles.		
Storage buffer	Supplied in 20 mM phosphate (pH 7.5), 150 mM NaCl, 100 μg/ml BSA, 50% glycerol and less than 0.02% sodium azide		

General Information

Background	Cyclins are a family of proteins that activate specific cyclin-dependent kinases required for progression through the cell cycle. The entry of all eukaryotic cells into mitosis is regulated by activation of cdc2/cdk1 at the G2/M transition. Five cyclin B1 phosphorylation sites (Ser116, 126, 128, 133, and 147) are located in the cytoplasmic retention signal (CRS) domain and are thought to regulate the translocation of cyclin B1 to the nucleus at the G2/M checkpoint, promoting nuclear accumulation and initiation of mitosis. Research studies have shown that cyclin B1 is overexpressed in breast, prostate, and non-small cell lung cancers.
Immunogen	Polyclonal antibody is produced by immunizing animals with a synthetic peptide of Cyclin B1.
Purification	Polyclonal antibody was purified by Protein A affinity chromatography.

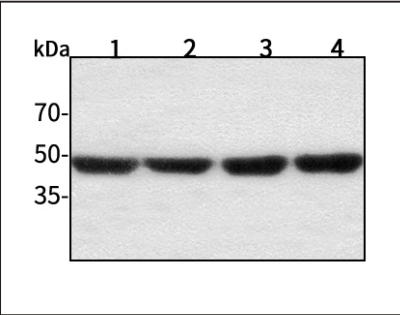
Anti-Cyclin B1 Rabbit pAb



WL01760

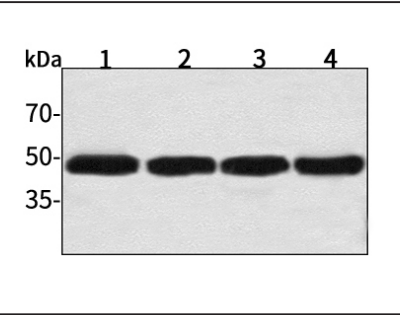
For Research Use Only. Not For Use In Diagnostic Procedures

Product Images



Western blot-Anti-Cyclin B1 pAb

Lane 1: Human BGC-823 cell lysate  
Lane 2: Human MGC-803 cell lysate  
Lane 3: Human SGC-7901 cell lysate  
Lane 4: Human MCF-7 cell lysate  
All lanes: Anti-Cyclin B1 at 1:1000 dilution  
Lysates/proteins at 20-50 μg per lane.  
Predicted band size: 48 kDa  
Observed band size: 48-60 kDa



Western blot-Anti-Cyclin B1 pAb

Lane 1: Mouse kidney tissue lysate  
Lane 2: Mouse heart tissue lysate  
Lane 3: Rat liver tissue lysate  
Lane 4: Rat brain tissue lysate  
All lanes: Anti-Cyclin B1 at 1:1000 dilution  
Lysates/proteins at 20-50 μg per lane.  
Predicted band size: 48 kDa  
Observed band size: 48-60 kDa