

Anti-C-JUN Rabbit pAb



WL02863

For Research Use Only. Not For Use In Diagnostic Procedures

Product Information

Product name	Anti-C-JUN Rabbit pAb	
Source	Rabbit	
Species reactivity	Human, Mouse, Rat	
Tested applications	WB	1:1000-1:2000
	IHC	1:100-1:400
	IF	1:100-1:400
Cellular localization	Nucleus.	
Pack size	50/100/200/500/1000µl	
Storage	Store at -20°C. Avoid freeze/thaw cycles.	
Storage buffer	Supplied in 20 mM phosphate (pH 7.5), 150 mM NaCl, 100 µg/ml	
	BSA, 50% glycerol and less than 0.02% sodium azide	

General Information

Background	The c-Jun proto-oncogene was first identified as the cellular homolog of the avian sarcoma virus v-Jun oncogene. The c-Jun protein, along with c-Fos, is a component of the AP-1 transcriptional complex. c-Jun can form either Jun/Jun homodimers or Jun/Fos heterodimers via the leucine repeats in both proteins. Homo- and heterodimers bind to the TGACTCA consensus sequence present in numerous promoters and initially identified as the phorbol ester tumor promoter response element (TRE). Two additional genes, Jun B and Jun D, have been shown to be almost identical to c-Jun in their C-terminal regions, which are involved in dimerization and DNA binding, whereas their N-terminal domains, which are involved in transcriptional activation, diverge.
Immunogen	Polyclonal antibody is produced by immunizing animals with a synthetic peptide of C-JUN.
Purification	Polyclonal antibody was purified by Protein A affinity chromatography.

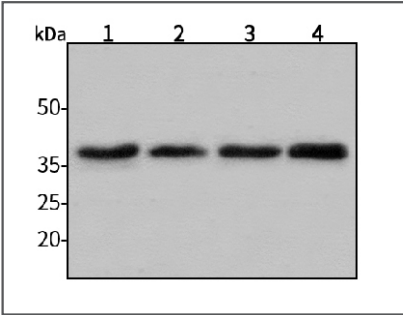
Anti-C-JUN Rabbit pAb



WL02863

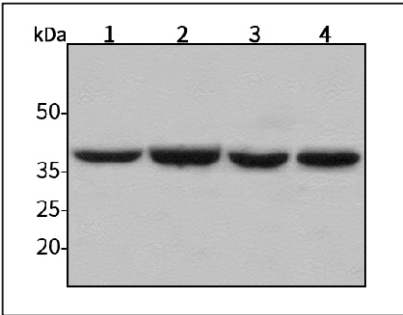
For Research Use Only. Not For Use In Diagnostic Procedures

Product Images



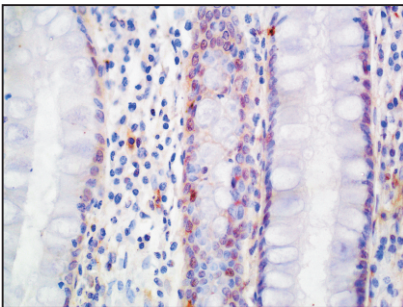
Western blot-Anti-C-JUN pAb

Lane 1: Human HepG2 cell lysate
Lane 2: Human Hela cell lysate
Lane 3: Human BGC-823 cell lysate
Lane 4: Human MGC-803 cell lysate
All lanes: Anti-C-JUN at 1:1000 dilution
Lysates/proteins at 20-50 µg per lane.
Predicted band size: 36 kDa
Observed band size: 36 kDa



Western blot-Anti-C-JUN pAb

Lane 1: Mouse kidney tissue lysate
Lane 2: Mouse heart tissue lysate
Lane 3: Rat liver tissue lysate
Lane 4: Rat brain tissue lysate
All lanes: Anti-C-JUN at 1:1000 dilution
Lysates/proteins at 20-50 µg per lane.
Predicted band size: 36 kDa
Observed band size: 36 kDa



Immunohistochemistry-Anti-C-JUN pAb

Immunohistochemical analysis of paraffin-embedded Human colon cancer using anti-C-JUN Rabbit Antibody at 1:200 dilution.
Perform heat mediated antigen retrieval with Tris-EDTA buffer pH 9.0

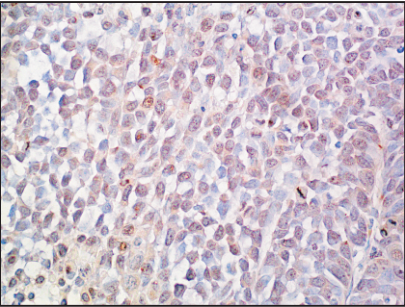
Anti-C-JUN Rabbit pAb



WL02863

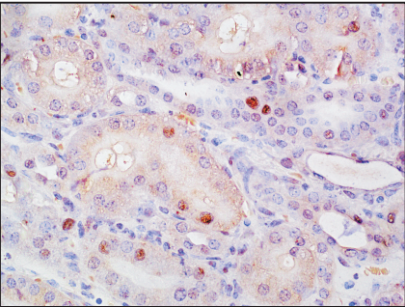
For Research Use Only. Not For Use In Diagnostic Procedures

Product Information



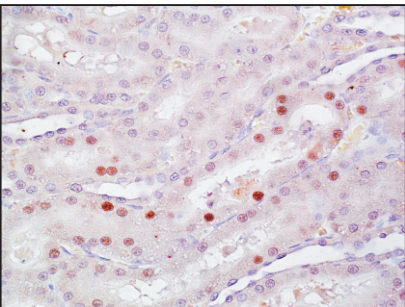
Immunohistochemistry-Anti-C-JUN pAb

Immunohistochemical analysis of paraffin-embedded human 823 cell tumor using anti-C-JUN Rabbit Antibody at 1:200 dilution.
Perform heat mediated antigen retrieval with Tris-EDTA buffer pH 9.0



Immunohistochemistry-Anti-C-JUN pAb

Immunohistochemical analysis of paraffin-embedded mouse kidney using anti-C-JUN Rabbit Antibody at 1:200 dilution.
Perform heat mediated antigen retrieval with Tris-EDTA buffer pH 9.0



Immunohistochemistry-Anti-C-JUN pAb

Immunohistochemical analysis of paraffin-embedded rat kidney using anti-C-JUN Rabbit Antibody at 1:200 dilution.
Perform heat mediated antigen retrieval with Tris-EDTA buffer pH 9.0

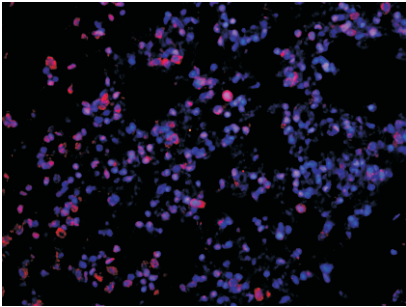
Anti-C-JUN Rabbit pAb



WL02863

For Research Use Only. Not For Use In Diagnostic Procedures

Product Images



Immunofluorescence-Anti-C-JUN pAb

Immunofluorescence analysis of paraffin-embedded mouse lung using anti-C-JUN Rabbit Antibody at 1:200 dilution.
Perform heat mediated antigen retrieval with Tris-EDTA buffer pH 9.0