

## Anti-Succinyl-ANXA6 (Lys299) Rabbit pAb Wanleibio

WL06182

For Research Use Only. Not For Use In Diagnostic Procedures

## Product Information

**Product name** Anti-Succinyl-ANXA6 (Lys299) Rabbit pAb**Source** Rabbit**Species reactivity** Human, Mouse, Rat**Tested applications** WB 1:500-1:1000

IHC, IF 1:50-1:200

Dot blot 1:500-1:1000

**Cellular localization** Cytoplasm. Melanosome.**Pack size** 50/100/200/500/1000µl**Storage** Store at -20°C. Avoid freeze/thaw cycles.**Storage buffer** Supplied in 20 mM phosphate (pH 7.5), 150 mM NaCl, 100 µg/ml

BSA, 50% glycerol and less than 0.02% sodium azide

## General Information

## Background

Succinylation is a post-translational modification in which succinyl groups are added to lysine residues of protein molecules. The potential role of succinylation is currently being studied, but with the addition of succinyl groups, the charge of lysine changes from +1 to -1 (at physiological pH), and a relatively large structural portion is introduced, larger than acetylation or methylation, which is expected to lead to more significant changes in protein structure and function. ANXA6, Also known as CBP68, it belongs to the calcium dependent membrane and phospholipid binding protein family. Several members of the membrane associated protein family are involved in membrane related events in both extracellular and intracellular pathways. Membrane associated protein VI is involved in mediating the endosome aggregation and vesicle fusion of secretory epithelial cells during exocytosis. It may be related to CD21. It can regulate the release of calcium within cells.

## Immunogen

Polyclonal antibody is produced by immunizing animals with a synthetic peptide of Succinyl-ANXA6 (Lys299) .

## Purification

Polyclonal antibody was purified by immunogen affinity chromatography.

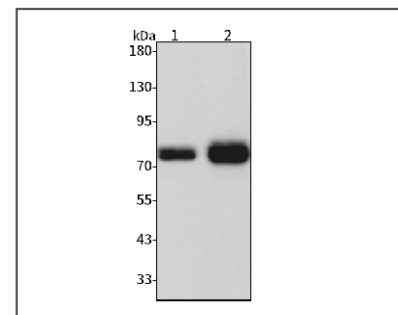


## Anti-Succinyl-ANXA6 (Lys299) Rabbit pAb Wanleibio

WL06182

For Research Use Only. Not For Use In Diagnostic Procedures

## Product Images



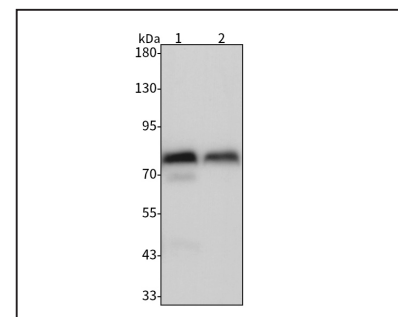
## Western blot-Anti-Succinyl-ANXA6 (Lys299) pAb

**Lane 1:** Human Hela cell lysate**Lane 2:** Human Hela cells treated with sodium butyrate (30mM) lysate

**All lanes:** Anti-Succinyl-ANXA6 (Lys299) at 1:1000 dilution  
Lysates/proteins at 20-50 µg per lane.

Predicted band size: 75 kDa

Observed band size: 75 kDa



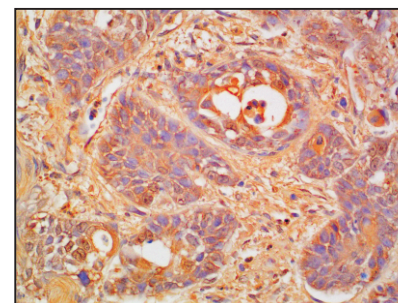
## Western blot-Anti-Succinyl-ANXA6 (Lys299) pAb

**Lane 1:** Mouse colon tissue lysate**Lane 2:** Rat skeletal muscle tissue lysate

**All lanes:** Anti-Succinyl-ANXA6 (Lys299) at 1:1000 dilution  
Lysates/proteins at 20-50 µg per lane.

Predicted band size: 75 kDa

Observed band size: 75 kDa



## Immunohistochemistry-Anti-Succinyl-ANXA6 (Lys299) pAb

Immunohistochemical analysis of paraffin-embedded human pancreas cancer using anti-Succinyl-ANXA6 (Lys299) Rabbit Antibody at 1:100 dilution.

Perform heat mediated antigen retrieval with Tris-EDTA buffer pH 9.0

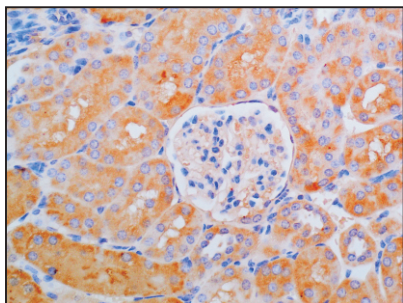
# Anti-Succinyl-ANXA6 (Lys299) Rabbit pAb



WL06182

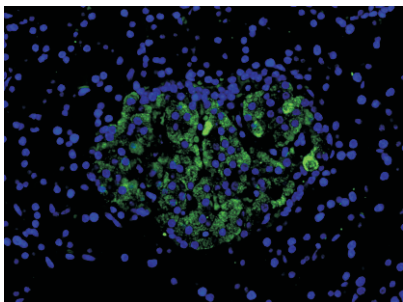
For Research Use Only. Not For Use In Diagnostic Procedures

## Product Information



### Immunohistochemistry-Anti-Succinyl-ANXA6 (Lys299) pAb

Immunohistochemical analysis of paraffin-embedded mouse kidney using anti-Succinyl-ANXA6 (Lys299) Rabbit Antibody at 1:100 dilution.  
Perform heat mediated antigen retrieval with Tris-EDTA buffer pH 9.0



### Immunofluorescence-Anti-Succinyl-ANXA6 (Lys299) pAb

Immunofluorescence analysis of paraffin-embedded rat pancreas using anti-Succinyl-ANXA6 (Lys299) Rabbit Antibody at 1:100 dilution.  
Perform heat mediated antigen retrieval with Tris-EDTA buffer pH 9.0