

## Anti-ALPL Rabbit pAb



WL00830

For Research Use Only. Not For Use In Diagnostic Procedures

## Product Information

<b>Product name</b>	Anti-ALPL Rabbit pAb	
<b>Source</b>	Rabbit	
<b>Species reactivity</b>	Human, Mouse, Rat	
<b>Tested applications</b>	WB	1:500-1:1000
	IHC, IF	1:50-1:200
<b>Cellular localization</b>	Cell membrane, Mitochondrion.	
<b>Pack size</b>	50/100/200/500/1000µl	
<b>Storage</b>	Store at -20°C. <b>Avoid freeze/thaw cycles.</b>	
<b>Storage buffer</b>	Supplied in 20 mM phosphate (pH 7.5), 150 mM NaCl, 100 µg/ml	
	BSA, 50% glycerol and less than 0.02% sodium azide	

## General Information

<b>Background</b>	There are at least four distinct but related alkaline phosphatases: intestinal, placental, placental-like, and liver/bone/kidney (tissue non-specific). The intestinal alkaline phosphatase gene encodes a digestive brush-border enzyme. This enzyme is a component of the gut mucosal defense system and is thought to function in the detoxification of lipopolysaccharide, and in the prevention of bacterial translocation in the gut.
<b>Immunogen</b>	Polyclonal antibody is produced by immunizing animals with a synthetic peptide of ALPL.
<b>Purification</b>	Polyclonal antibody was purified by immunogen affinity chromatography.

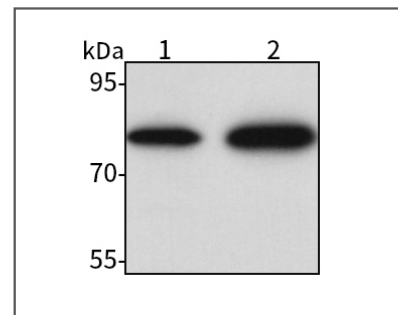
## Anti-ALPL Rabbit pAb



WL00830

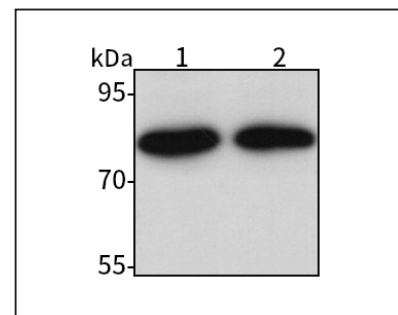
For Research Use Only. Not For Use In Diagnostic Procedures

## Product Images



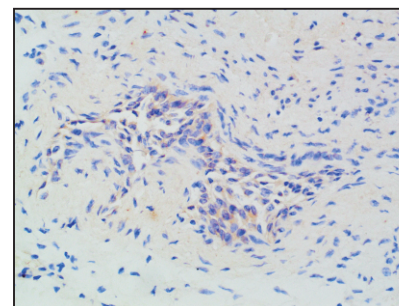
Western blot-Anti-ALPL pAb

Lane 1: Human Hela cell lysate  
 Lane 2: Human A2780 cell lysate  
 All lanes: Anti-ALPL at 1:1000 dilution  
 Lysates/proteins at 20-50 µg per lane.  
 Predicted band size: 56 kDa  
 Observed band size: 80 kDa



Western blot-Anti-ALPL pAb

Lane 1: Mouse lung tissue lysate  
 Lane 2: Rat liver tissue lysate  
 All lanes: Anti-ALPL at 1:1000 dilution  
 Lysates/proteins at 20-50 µg per lane.  
 Predicted band size: 56 kDa  
 Observed band size: 80 kDa



Immunohistochemistry-Anti-ALPL pAb

Immunohistochemical analysis of paraffin-embedded mouse bladder using anti-ALPL Rabbit Antibody at 1:100 dilution.  
 Perform heat mediated antigen retrieval with Tris-EDTA buffer pH 9.0

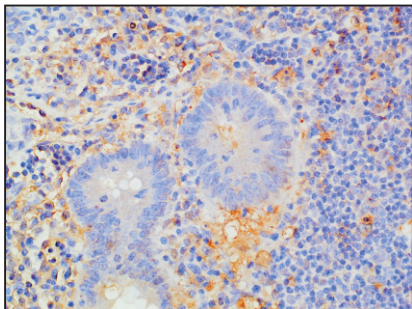
## Anti-ALPL Rabbit pAb



WL00830

For Research Use Only. Not For Use In Diagnostic Procedures

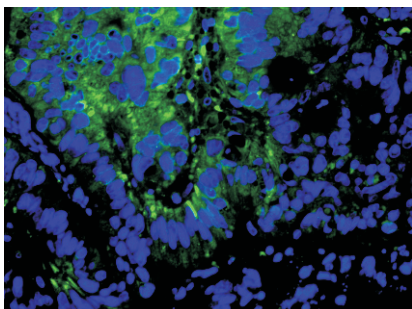
### Product Information



#### Immunohistochemistry-Anti-ALPL pAb

Immunohistochemical analysis of paraffin-embedded rat intestine using anti-ALPL Rabbit Antibody at 1:100 dilution.

Perform heat mediated antigen retrieval with Tris-EDTA buffer pH 9.0



#### Immunofluorescence-Anti-ALPL pAb

Immunofluorescence analysis of paraffin-embedded human colon cancer using anti-ALPL Rabbit Antibody at 1:100 dilution.

Perform heat mediated antigen retrieval with Tris-EDTA buffer pH 9.0