

Anti-ATG13 Rabbit pAb



WL02408

For Research Use Only. Not For Use In Diagnostic Procedures

Product Information

Product name	Anti-ATG13 Rabbit pAb	
Source	Rabbit	
Species reactivity	Human, Mouse, Rat	
Tested applications	WB	1:500-1:1000
	IHC	1:50-1:200
Molecular Wt.	ATG13 isoform 1: 57 kDa	
	ATG13 isoform 2: 53 kDa	
	ATG13 isoform 3: 44 kDa	

Cellular localization Cytoplasm, Preautophagosomal structure

Pack size 50/100/200/500/1000μl

Storage Store at -20°C. **Avoid freeze/thaw cycles.**

Storage buffer Supplied in 20 mM phosphate (pH 7.5), 150 mM NaCl, 100 μg/ml

BSA, 50% glycerol and less than 0.02% sodium azide

General Information

Background Autophagy is generally activated by conditions of nutrient deprivation but has also been associated with a number of physiological processes including development, differentiation, neurodegeneration, infection, and cancer. Atg13 (ATG13 autophagy related 13 homolog) is a 517 amino acid phosphoprotein belonging to the ATG13 metazoan family. Atg13 functions as an autophagy factor required for autophagosome formation. Atg13 is a target of the TOR kinase signaling pathway, which mediates autophagy by controlling phosphorylation of Atg13 and ULK1, and by regulating the Atg13-ULK1-RB1CC1 complex. Atg13 also functions as a component of another complex, the ULK1-Atg13 complex, which regulates Atg9 and Atg23 retrieval transport from the pre-autophagosomal structure.

Immunogen Polyclonal antibody is produced by immunizing animals with a synthetic peptide of ATG13.

Purification Polyclonal antibody was purified by immunogen affinity chromatography.

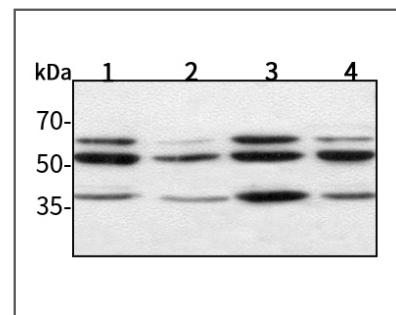
Anti-ATG13 Rabbit pAb



WL02408

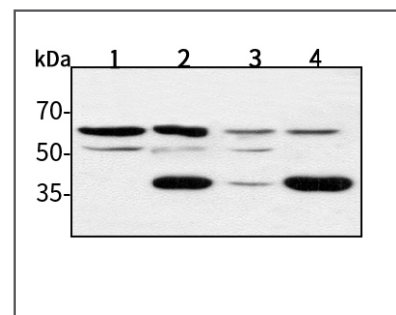
For Research Use Only. Not For Use In Diagnostic Procedures

Product Images



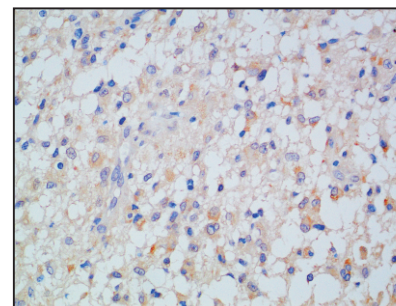
Western blot-Anti-ATG13 pAb

Lane 1: Human BGC-823 cell lysate 30μg
 Lane 2: Human MGC-803 cell lysate 30μg
 Lane 3: Human SGC-7901 cell lysate 30μg
 Lane 4: Human MCF-7 cell lysate 30μg
Separation gel: 10% polyacrylamide
Electrophoresis: 100V, 4°C, 3h
Transmembrane: 100V, 4°C, 1h
Blocking: 5% w/v nonfat dry milk, 1 × TBST, at RT with gentle shaking
Primary antibody: 1:1000 in blocking buffer, 4°C, overnight
Secondary antibody (WLA023a) : 1:5000-1:10000, 45min



Western blot-Anti-ATG13 pAb

Lane 1: Mouse kidney tissue lysate 30μg
 Lane 2: Mouse heart tissue lysate 30μg
 Lane 3: Rat liver tissue lysate 30μg
 Lane 4: Rat brain tissue lysate 30μg
Separation gel: 10% polyacrylamide
Electrophoresis: 100V, 4°C, 3h
Transmembrane: 100V, 4°C, 1h
Blocking: 5% w/v nonfat dry milk, 1 × TBST, at RT with gentle shaking
Primary antibody: 1:1000 in blocking buffer, 4°C, overnight
Secondary antibody (WLA023a) : 1:5000-1:10000, 45min



Immunohistochemistry-Anti-ATG13 pAb

Immunohistochemical analysis of paraffin-embedded human brain glioma using anti-ATG13 Rabbit Antibody at 1:200 dilution.
 Perform heat mediated antigen retrieval with Tris-EDTA buffer pH 9.0