

Anti-Aspartate Aminotransferase Rabbit pAb

Wanleibio



WL04905

For Research Use Only. Not For Use In Diagnostic Procedures

Product Information

Product name	Anti-Aspartate Aminotransferase Rabbit pAb	
Source	Rabbit	
Species reactivity	Human, Mouse, Rat	
Tested applications	WB	1:1000-1:2000
	IF	1:100-1:500
Cellular localization	Cytoplasm	
Pack size	50/100/200/500/1000μl	
Storage	Store at -20°C. Avoid freeze/thaw cycles.	
Storage buffer	Supplied in 20 mM phosphate (pH 7.5), 150 mM NaCl, 100 μg/ml	
	BSA, 50% glycerol and less than 0.02% sodium azide	

General Information

Background	Glutamic-oxaloacetic transaminase is a pyridoxal phosphate-dependent enzyme which exists in cytoplasmic and mitochondrial forms, GOT1 and GOT2, respectively. GOT plays a role in amino acid metabolism and the urea and tricarboxylic acid cycles. GOT1 can potentially control the intracellular levels of reactive oxygen species (ROS) through NADPH synthesis and enhances tumor growth.
Immunogen	Polyclonal antibody is produced by immunizing animals with a synthetic peptide of Aspartate Aminotransferase.
Purification	Polyclonal antibody was purified by Protein A affinity chromatography.

Anti-Aspartate Aminotransferase Rabbit pAb

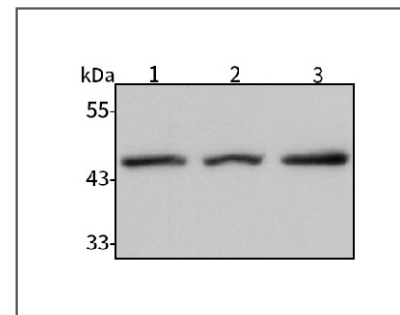
Wanleibio



WL04905

For Research Use Only. Not For Use In Diagnostic Procedures

Product Images



Western blot-Anti-Aspartate Aminotransferase pAb

Lane 1: Human A2780 cell lysate

Lane 2: Human Hela cell lysate

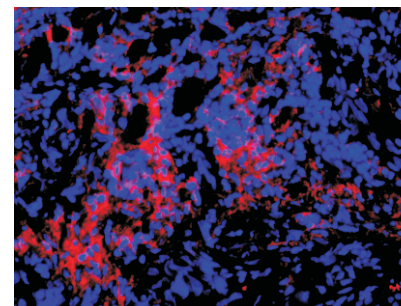
Lane 3: Human Raji cell lysate

All lanes: Anti-Aspartate Aminotransferase at 1:1000 dilution

Lysates/proteins at 20-50 μg per lane.

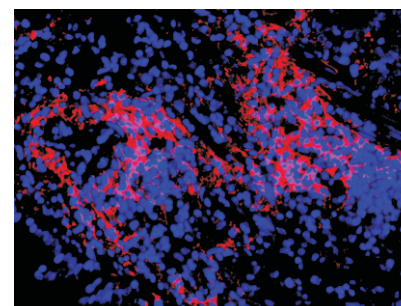
Predicted band size: 46 kDa

Observed band size: 46 kDa



Immunofluorescence-Anti-Aspartate Aminotransferase pAb

Immunofluorescence analysis of paraffin-embedded human lung cancer using anti-Aspartate Aminotransferase Rabbit Antibody at 1:200 dilution. Perform heat mediated antigen retrieval with Tris-EDTA buffer pH 9.0



Immunofluorescence-Anti-Aspartate Aminotransferase pAb

Immunofluorescence analysis of paraffin-embedded mouse lung using anti-Aspartate Aminotransferase Rabbit Antibody at 1:200 dilution. Perform heat mediated antigen retrieval with Tris-EDTA buffer pH 9.0

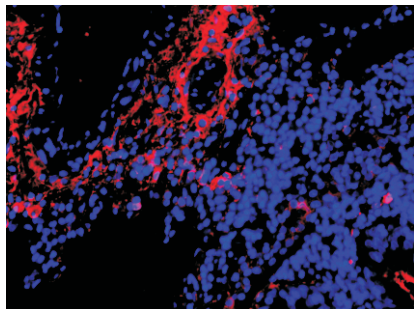
Anti-Aspartate Aminotransferase Rabbit pAb



WL04905

For Research Use Only. Not For Use In Diagnostic Procedures

Product Information



Immunofluorescence-Anti-Aspartate Aminotransferase pAb

Immunofluorescence analysis of paraffin-embedded rat lung using anti-Aspartate Aminotransferase Rabbit Antibody at 1:200 dilution.

Perform heat mediated antigen retrieval with Tris-EDTA buffer pH 9.0