

Anti-DKK2 Rabbit pAb



WL05470

For Research Use Only. Not For Use In Diagnostic Procedures

Product Information

Product name	Anti-DKK2 Rabbit pAb	
Source	Rabbit	
Species reactivity	Human, Mouse, Rat	
Tested applications	WB	1:1000-1:2000
	IF	1:100-1:500
Cellular localization	Secreted	
Pack size	50/100/200/500/1000µl	
Storage	Store at -20°C. Avoid freeze/thaw cycles.	
Storage buffer	Supplied in 20 mM phosphate (pH 7.5), 150 mM NaCl, 100 µg/ml	
	BSA, 50% glycerol and less than 0.02% sodium azide	

General Information

Background	The secreted protein contains two cysteine rich regions and is involved in embryonic development through its interactions with the Wnt signaling pathway. It can act as either an agonist or antagonist of Wnt/beta-catenin signaling, depending on the cellular context and the presence of the co-factor kremen 2.
Immunogen	Polyclonal antibody is produced by immunizing animals with a synthetic peptide of DKK2.
Purification	Polyclonal antibody was purified by Protein A affinity chromatography.

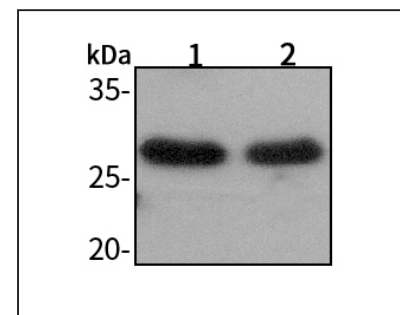
Anti-DKK2 Rabbit pAb



WL05470

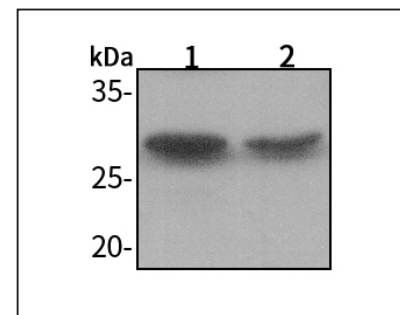
For Research Use Only. Not For Use In Diagnostic Procedures

Product Images



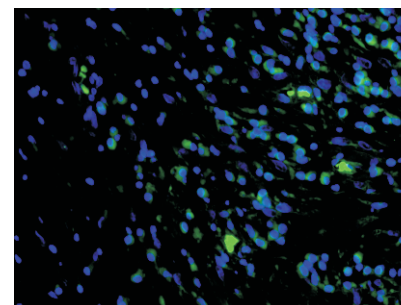
Western blot-Anti-DKK2 pAb

Lane 1: Human HeLa cell lysate
 Lane 2: Human SW480 cell lysate
 All lanes: Anti-DKK2 at 1:1000 dilution
 Lysates/proteins at 20-50 µg per lane.
 Predicted band size: 28 kDa
 Observed band size: 28 kDa



Western blot-Anti-DKK2 pAb

Lane 1: Mouse heart tissue lysate
 Lane 2: Mouse liver tissue lysate
 All lanes: Anti-DKK2 at 1:1000 dilution
 Lysates/proteins at 20-50 µg per lane.
 Predicted band size: 28 kDa
 Observed band size: 28 kDa



Immunofluorescence-Anti-DKK2 pAb

Immunofluorescence analysis of paraffin-embedded human lung cancer using anti-DKK2 Rabbit Antibody at 1:200 dilution.
 Perform heat mediated antigen retrieval with Tris-EDTA buffer pH 9.0