

Anti-IGF1 Receptor Rabbit pAb



WL05673

For Research Use Only. Not For Use In Diagnostic Procedures

Product Information

Product name	Anti-IGF1 Receptor Rabbit pAb	
Source	Rabbit	
Species reactivity	Human, Mouse, Rat	
Tested applications	WB	1:500-1:1000
	IHC	1:200
Cellular localization	Cell membrane	
Pack size	50/100/200/500/1000μl	
Storage	Store at -20°C. Avoid freeze/thaw cycles.	
Storage buffer	Supplied in 20 mM phosphate (pH 7.5), 150 mM NaCl, 100 μg/ml	
	BSA, 50% glycerol and less than 0.02% sodium azide	

General Information

Background	This receptor binds insulin-like growth factor with a high affinity. It has tyrosine kinase activity. The insulin-like growth factor I receptor plays a critical role in transformation events. Cleavage of the precursor generates alpha and beta subunits. It is highly overexpressed in most malignant tissues where it functions as an anti-apoptotic agent by enhancing cell survival.
Immunogen	Polyclonal antibody is produced by immunizing animals with a synthetic peptide of IGF1 Receptor.
Purification	Polyclonal antibody was purified by immunogen affinity chromatography.

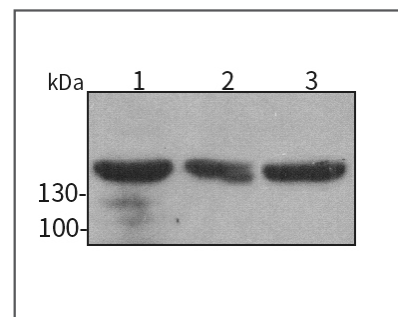
Anti-IGF1 Receptor Rabbit pAb



WL05673

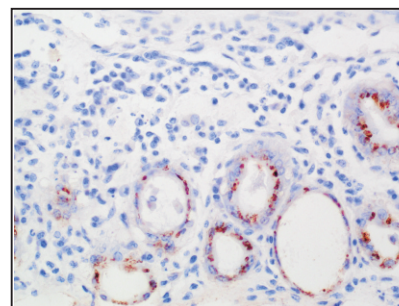
For Research Use Only. Not For Use In Diagnostic Procedures

Product Images



Western blot-Anti-IGF1 Receptor pAb

Lane 1: Human HCT116 cell lysate
Lane 2: Human MDA-MB-231 cell lysate
Lane 3: Human Hela cell lysate
All lanes: Anti-ALK at 1:1000 dilution
 Lysates/proteins at 20-50 μg per lane.
 Predicted band size: 156 kDa
 Observed band size: 100-156 kDa



Immunohistochemistry-Anti-IGF1 Receptor pAb

Immunohistochemical analysis of paraffin-embedded mouse colon using anti-IGF1 Receptor Rabbit Antibody at 1:200 dilution.
 Perform heat mediated antigen retrieval with Tris-EDTA buffer pH 9.0