

Anti-Ep-CAM Rabbit pAb



WL01375

For Research Use Only. Not For Use In Diagnostic Procedures

Product Information

Product name	Anti-Ep-CAM Rabbit pAb		
Source	Rabbit		
Species reactivity	Human, Mouse, Rat		
Tested applications	WB	1:1000-1:2000	
	IF	1:500	
Cellular localization	Lateral cell membrane. Cell junction		
Pack size	50/100/200/500/1000μl		
Storage	Store at -20°C. <b>Avoid freeze/thaw cycles.</b>		
Storage buffer	Supplied in 20 mM phosphate (pH 7.5), 150 mM NaCl, 100 μg/ml		
	BSA, 50% glycerol and less than 0.02% sodium azide		

General Information

Background	Epithelial cell adhesion and activating molecule (Ep-CAM/CD326) is a transmembrane glycoprotein that mediates Ca2+-independent, homophilic adhesions on the basolateral surface of most epithelial cells. Ep-CAM is not expressed in adult squamous epithelium, but it is highly expressed in adeno and squamous cell carcinomas. Ep-CAM is overexpressed in a variety of carcinomas and is, therefore, a potential target for the visualization and therapy of human solid tumors. Ep-CAM contains an extracellular domain containing two epidermal growth factor-like repeats, followed by a cysteine poor region, which is necessary for the adhesion properties of the molecule.
Immunogen	Polyclonal antibody is produced by immunizing animals with a synthetic peptide of Ep-CAM.
Purification	Polyclonal antibody was purified by Protein A affinity chromatography.

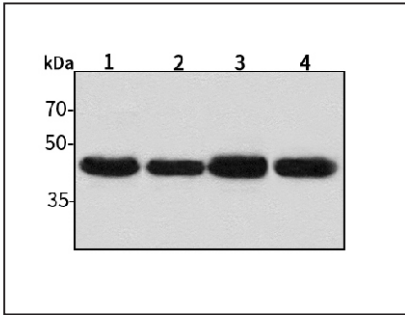
Anti-Ep-CAM Rabbit pAb



WL01375

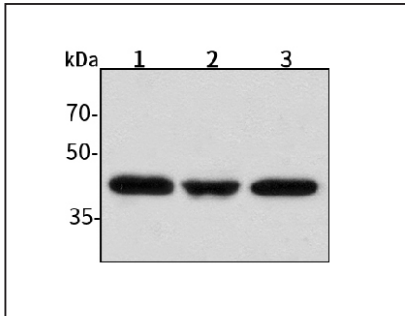
For Research Use Only. Not For Use In Diagnostic Procedures

Product Images



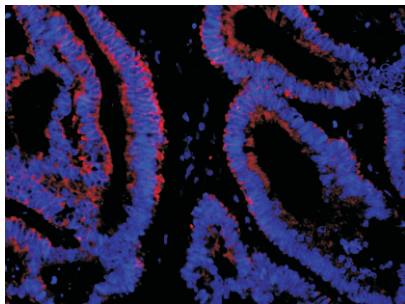
Western blot-Anti-Ep-CAM pAb

Lane 1: Human HepG2 cell lysate  
Lane 2: Human Hela cell lysate  
Lane 3: Human BGC-823 cell lysate  
Lane 4: Human MGC-803 cell lysate  
All lanes: Anti-Ep-CAM at 1:1000 dilution  
Lysates/proteins at 20-50 µg per lane.  
Predicted band size: 35 kDa  
Observed band size: 40 kDa



Western blot-Anti-Ep-CAM pAb

Lane 1: Mouse kidney tissue lysate  
Lane 2: Mouse liver tissue lysate  
Lane 3: Rat brain tissue lysate  
All lanes: Anti-Ep-CAM at 1:1000 dilution  
Lysates/proteins at 20-50 µg per lane.  
Predicted band size: 35 kDa  
Observed band size: 40 kDa



Immunofluorescence-Anti-Ep-CAM pAb

Immunofluorescence analysis of paraffin-embedded human rectum cancer using anti-Ep-CAM Rabbit Antibody at 1:500 dilution.  
Perform heat mediated antigen retrieval with Tris-EDTA buffer pH 9.0

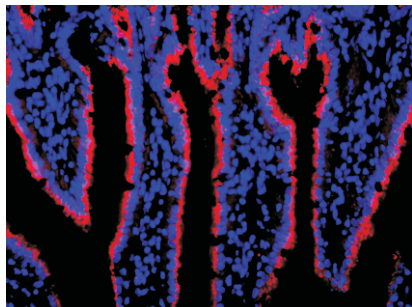
## Anti-Ep-CAM Rabbit pAb



WL01375

For Research Use Only. Not For Use In Diagnostic Procedures

### Product Information



#### Immunofluorescence-Anti-Ep-CAM pAb

Immunofluorescence analysis of paraffin-embedded mouse intestine using anti-Ep-CAM Rabbit Antibody at 1:500 dilution.

Perform heat mediated antigen retrieval with Tris-EDTA buffer pH 9.0