

Anti-HMGB1 Rabbit pAb



WL03023

For Research Use Only. Not For Use In Diagnostic Procedures

Product Information

Product name	Anti-HMGB1 Rabbit pAb		
Source	Rabbit		
Species reactivity	Human, Mouse, Rat		
Tested applications	WB	1:500-1:1000	
	IHC	1:100-1:400	
	IF	1:100-1:400	
Cellular localization	Nucleus. Chromosome. Cytoplasm. Secreted. Cell membrane. Endosome		
Pack size	50/100/200/500/1000μl		
Storage	Store at -20°C. Avoid freeze/thaw cycles.		
Storage buffer	Supplied in 20 mM phosphate (pH 7.5), 150 mM NaCl, 100 μg/ml		
	BSA, 50% glycerol and less than 0.02% sodium azide		

General Information

Background	HMGB1 belongs to high mobility group and contains HMG-box domain. Like the histones, HMGB1 is among the most important chromatin proteins. The presence of HMGB1 in the nucleus depends on posttranslational modifications. When the protein is not acetylated, it stays in the nucleus, but hyperacetylation on lysine residues causes it to translocate into the cytosol. HMGB1 is an intracellular protein that can translocate to the nucleus where it binds DNA and regulates gene expression. HMGB1 can interact with TLR ligands and cytokines, and activates cells through the multiple surface receptors including TLR2, TLR4, and RAGE. HMGB1 has been proposed as a target for cancer therapy.
Immunogen	Polyclonal antibody is produced by immunizing animals with a synthetic peptide of HMGB1.
Purification	Polyclonal antibody was purified by immunogen affinity chromatography.

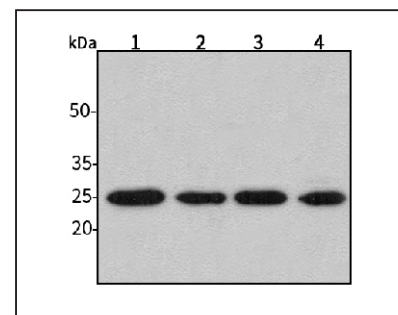
Anti-HMGB1 Rabbit pAb



WL03023

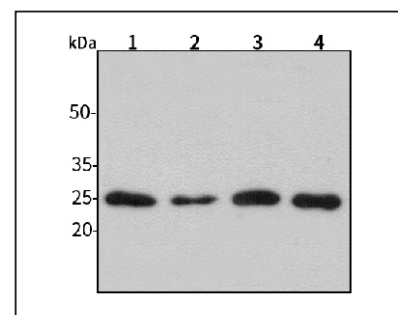
For Research Use Only. Not For Use In Diagnostic Procedures

Product Images



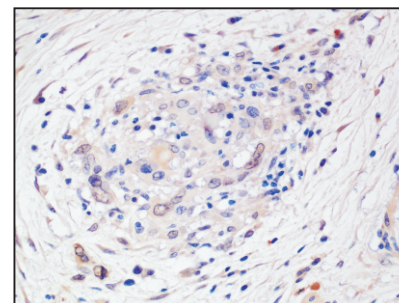
Western blot-Anti-HMGB1 pAb

Lane 1: Human HepG2 cell lysate
 Lane 2: Human Hela cell lysate
 Lane 3: Human BGC-823 cell lysate
 Lane 4: Human MGC-803 cell lysate
 All lanes: Anti-HMGB1 at 1:1000 dilution
 Lysates/proteins at 20-50 μg per lane.
 Predicted band size: 25 kDa
 Observed band size: 25 kDa



Western blot-Anti-HMGB1 pAb

Lane 1: Mouse kidney tissue lysate
 Lane 2: Mouse heart tissue lysate
 Lane 3: Rat spleen tissue lysate
 Lane 4: Rat stomach tissue lysate
 All lanes: Anti-HMGB1 at 1:1000 dilution
 Lysates/proteins at 20-50 μg per lane.
 Predicted band size: 25 kDa
 Observed band size: 25 kDa



Immunohistochemistry-Anti-HMGB1 pAb

Immunohistochemical analysis of paraffin-embedded human colon cancer using anti-HMGB1 Rabbit Antibody at 1:200 dilution.
 Perform heat mediated antigen retrieval with Tris-EDTA buffer pH 9.0

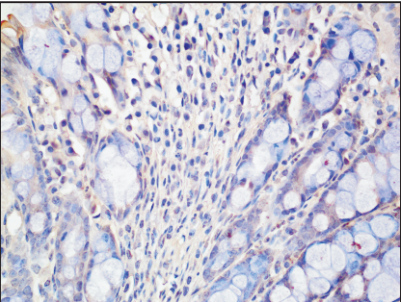
Anti-HMGB1 Rabbit pAb



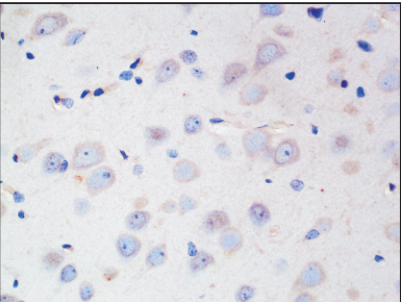
WL03023

For Research Use Only. Not For Use In Diagnostic Procedures

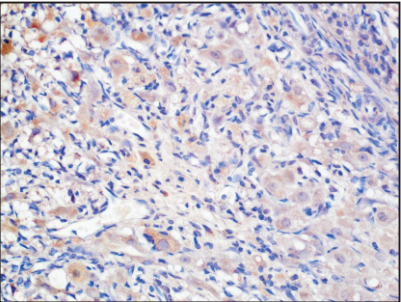
Product Information



Immunohistochemistry-Anti-HMGB1 pAb
Immunohistochemical analysis of paraffin-embedded mouse colon using anti-HMGB1 Rabbit Antibody at 1:200 dilution.
Perform heat mediated antigen retrieval with Tris-EDTA buffer pH 9.0



Immunohistochemistry-Anti-HMGB1 pAb
Immunohistochemical analysis of paraffin-embedded rat brain using anti-HMGB1 Rabbit Antibody at 1:200 dilution.
Perform heat mediated antigen retrieval with Tris-EDTA buffer pH 9.0



Immunohistochemistry-Anti-HMGB1 pAb
Immunohistochemical analysis of paraffin-embedded rat ovary using anti-HMGB1 Rabbit Antibody at 1:200 dilution.
Perform heat mediated antigen retrieval with Tris-EDTA buffer pH 9.0

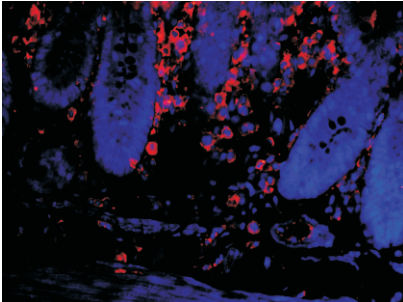
Anti-HMGB1 Rabbit pAb



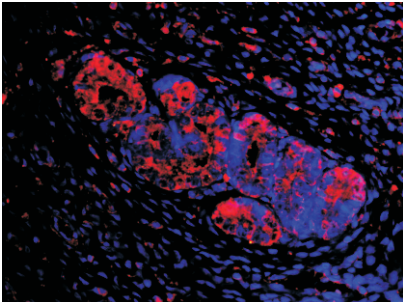
WL03023

For Research Use Only. Not For Use In Diagnostic Procedures

Product Images



Immunofluorescence-Anti-HMGB1 pAb
Immunofluorescence analysis of paraffin-embedded rat colon using anti-HMGB1 Rabbit Antibody at 1:200 dilution.
Perform heat mediated antigen retrieval with Tris-EDTA buffer pH 9.0



Immunofluorescence-Anti-HMGB1 pAb
Immunofluorescence analysis of paraffin-embedded rat uterus using anti-HMGB1 Rabbit Antibody at 1:200 dilution.
Perform heat mediated antigen retrieval with Tris-EDTA buffer pH 9.0