

## Anti-E-Cadherin Rabbit pAb



WL01482

For Research Use Only. Not For Use In Diagnostic Procedures

## Product Information

<b>Product name</b>	Anti-E-Cadherin Rabbit pAb	
<b>Source</b>	Rabbit	
<b>Species reactivity</b>	Human, Mouse, Rat	
<b>Tested applications</b>	WB	1:1000-1:2000
	IF	1:200
<b>Cellular localization</b>	Cell junction. Cell membrane. Cytoplasm. Endosome. Golgi apparatus	
<b>Pack size</b>	50/100/200/500/1000µl	
<b>Storage</b>	Store at -20°C. <b>Avoid freeze/thaw cycles.</b>	
<b>Storage buffer</b>	Supplied in 20 mM phosphate (pH 7.5), 150 mM NaCl, 100 µg/ml	
	BSA, 50% glycerol and less than 0.02% sodium azide	

## General Information

<b>Background</b>	E-Cadherin is a classical cadherin from the cadherin superfamily. The protein is a calcium dependent cell-cell adhesion glycoprotein comprised of five extracellular cadherin repeats, a transmembrane region and a highly conserved cytoplasmic tail. Mutations in this gene are correlated with gastric, breast, colorectal, thyroid and ovarian cancer. Loss of function is thought to contribute to progression in cancer by increasing proliferation, invasion, and/or metastasis. The ectodomain of this protein mediates bacterial adhesion to mammalian cells and the cytoplasmic domain is required for internalization.
<b>Immunogen</b>	Polyclonal antibody is produced by immunizing animals with a synthetic peptide of E-Cadherin.
<b>Purification</b>	Polyclonal antibody was purified by protein A affinity chromatography.

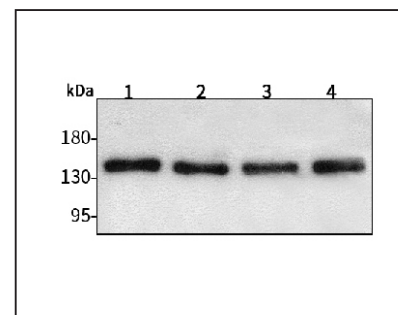
## Anti-E-Cadherin Rabbit pAb



WL01482

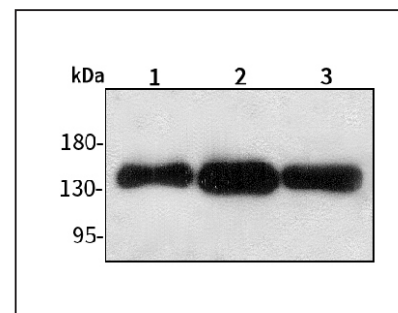
For Research Use Only. Not For Use In Diagnostic Procedures

## Product Images



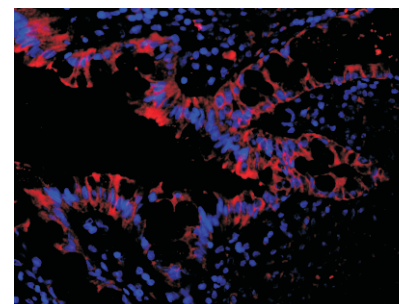
## Western blot-Anti-E-Cadherin pAb

**Lane 1:** Human BGC-823 cell lysate  
**Lane 2:** Human MGC-803 cell lysate  
**Lane 3:** Human SGC-7901 cell lysate  
**Lane 4:** Human MCF-7 cell lysate  
 All lanes: Anti-E-Cadherin at 1:1000 dilution  
 Lysates/proteins at 20-50 µg per lane.  
 Predicted band size: 97 kDa  
 Observed band size: 135 kDa



## Western blot-Anti-E-Cadherin pAb

**Lane 1:** Mouse stomach tissue lysate  
**Lane 2:** Mouse lung tissue lysate  
**Lane 3:** Rat skin tissue lysate  
 All lanes: Anti-E-Cadherin at 1:1000 dilution  
 Lysates/proteins at 20-50 µg per lane.  
 Predicted band size: 97 kDa  
 Observed band size: 135 kDa



## Immunofluorescence-Anti-E-Cadherin pAb

Immunofluorescence analysis of paraffin-embedded human colon cancer using anti-E-Cadherin Rabbit Antibody at 1:200 dilution.  
 Perform heat mediated antigen retrieval with Tris-EDTA buffer pH 9.0

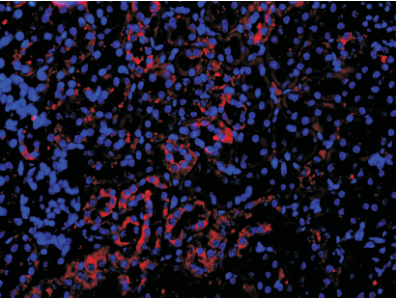
Anti-E-Cadherin Rabbit pAb



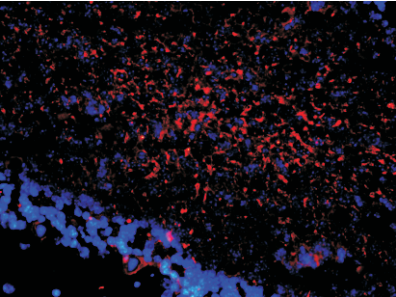
WL01482

For Research Use Only. Not For Use In Diagnostic Procedures

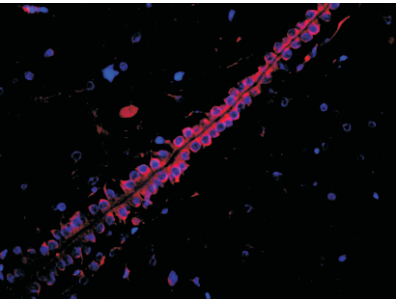
Product Information



**Immunofluorescence-Anti-E-Cadherin pAb**  
Immunofluorescence analysis of paraffin-embedded mouse kidney using anti-E-Cadherin Rabbit Antibody at 1:200 dilution.  
Perform heat mediated antigen retrieval with Tris-EDTA buffer pH 9.0



**Immunofluorescence-Anti-E-Cadherin pAb**  
Immunofluorescence analysis of paraffin-embedded mouse cerebellum using anti-E-Cadherin Rabbit Antibody at 1:200 dilution.  
Perform heat mediated antigen retrieval with Tris-EDTA buffer pH 9.0



**Immunofluorescence-Anti-E-Cadherin pAb**  
Immunofluorescence analysis of paraffin-embedded rat brain using anti-E-Cadherin Rabbit Antibody at 1:200 dilution.  
Perform heat mediated antigen retrieval with Tris-EDTA buffer pH 9.0

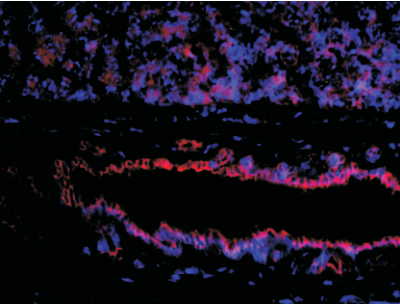
Anti-E-Cadherin Rabbit pAb



WL01482

For Research Use Only. Not For Use In Diagnostic Procedures

Product Images



**Immunofluorescence-Anti-E-Cadherin pAb**  
Immunofluorescence analysis of paraffin-embedded rat liver using anti-E-Cadherin Rabbit Antibody at 1:200 dilution.  
Perform heat mediated antigen retrieval with Tris-EDTA buffer pH 9.0