

Anti-Ferritin Light Chain/FTL Rabbit pAb



WL05303

For Research Use Only. Not For Use In Diagnostic Procedures

Product Information

Product name	Anti-Ferritin Light Chain/FTL Rabbit pAb	
Source	Rabbit	
Species reactivity	Human, Mouse, Rat	
Tested applications	WB	1:1000-1:2000
	IHC, IF	1:500
Cellular localization	Cytoplasm. Lysosome	
Pack size	50/100/200/500/1000µl	
Storage	Store at -20°C. Avoid freeze/thaw cycles.	
Storage buffer	Supplied in 20 mM phosphate (pH 7.5), 150 mM NaCl, 100 µg/ml	
	BSA, 50% glycerol and less than 0.02% sodium azide	

General Information

Background	FTL belongs to the ferritin family. Ferritin is the main intracellular iron storage protein in prokaryotes and eukaryotes. It consists of 24 subunits of ferritin heavy and light chains. The changes in the composition of ferritin subunits may affect the absorption and release rates of iron in different tissues. FTL is important for iron homeostasis and plays a role in transporting iron into cells. FTL mediates the absorption of iron by cystic cells in developing kidneys.
Immunogen	Polyclonal antibody is produced by immunizing animals with a synthetic peptide of Ferritin Light Chain/FTL.
Purification	Polyclonal antibody was purified by Protein A affinity chromatography.

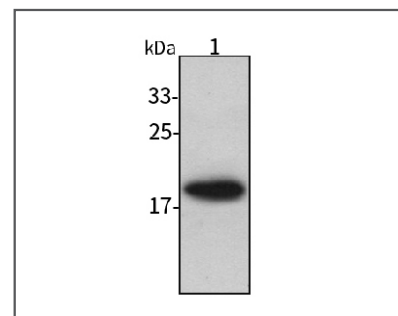
Anti-Ferritin Light Chain/FTL Rabbit pAb



WL05303

For Research Use Only. Not For Use In Diagnostic Procedures

Product Images



Western blot-Anti-Ferritin Light Chain/FTL pAb

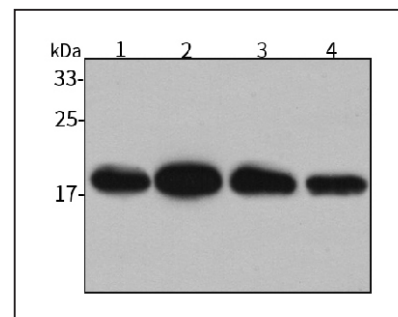
Lane 1: Human HCT116 cell lysate

All lanes: Anti-Ferritin Light Chain/FTL at 1:1000 dilution

Lysates/proteins at 20-50 µg per lane

Predicted band size: 20 kDa

Observed band size: 20 kDa



Western blot-Anti-Ferritin Light Chain/FTL pAb

Lane 1: Mouse liver tissue lysate

Lane 1: Mouse kidney tissue lysate

Lane 2: Rat lung tissue lysate

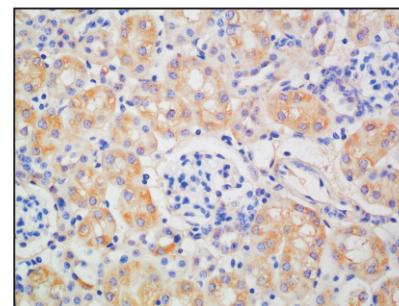
Lane 2: Rat small intestine tissue lysate

All lanes: Anti-Ferritin Light Chain/FTL at 1:1000 dilution

Lysates/proteins at 20-50 µg per lane

Predicted band size: 20 kDa

Observed band size: 20 kDa



Immunohistochemistry-Anti-Ferritin Light Chain/FTL pAb

Immunohistochemical analysis of paraffin-embedded mouse kidney using anti-Ferritin Light Chain/FTL Rabbit Antibody at 1:500 dilution.

Perform heat mediated antigen retrieval with Tris-EDTA buffer pH 9.0

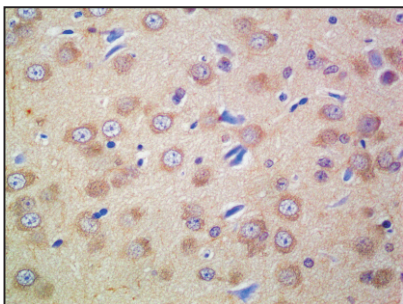
Anti-Ferritin Light Chain/FTL Rabbit pAb



WL05303

For Research Use Only. Not For Use In Diagnostic Procedures

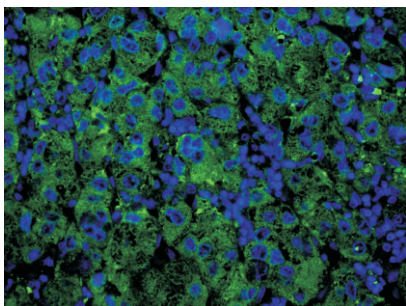
Product Information



Immunohistochemistry-Anti-Ferritin Light Chain/FTL pAb

Immunohistochemical analysis of paraffin-embedded rat brain using anti-Ferritin Light Chain/FTL Rabbit Antibody at 1:500 dilution.

Perform heat mediated antigen retrieval with Tris-EDTA buffer pH 9.0



Immunofluorescence-Anti-Ferritin Light Chain/FTL pAb

Immunofluorescence analysis of paraffin-embedded human liver cancer using anti-Ferritin Light Chain/FTL Rabbit Antibody at 1:500 dilution.

Perform heat mediated antigen retrieval with Tris-EDTA buffer pH 9.0