

Anti-G protein alpha Q Rabbit pAb



WL03665

For Research Use Only. Not For Use In Diagnostic Procedures

Product Information

Product name	Anti-G protein alpha Q Rabbit pAb		
Source	Rabbit		
Species reactivity	Human, Mouse, Rat		
Tested applications	WB	1:500-1:1000	
	IHC	1:200	
Cellular localization	Nucleus. Membrane. Nucleus membrane		
Pack size	50/100/200/500/1000µl		
Storage	Store at -20°C. Avoid freeze/thaw cycles.		
Storage buffer	Supplied in 20 mM phosphate (pH 7.5), 150 mM NaCl, 100 µg/ml		
	BSA, 50% glycerol and less than 0.02% sodium azide		

General Information

Background	Heterotrimeric G proteins function to relay information from cell surface receptors to intracellular effectors. This locus encodes a guanine nucleotide-binding protein. The protein, an alpha subunit in the Gq class, couples a seven-transmembrane domain receptor to activation of phospholipase C-beta. Mutations at this locus have been associated with problems in platelet activation and aggregation.
Immunogen	Polyclonal antibody is produced by immunizing animals with a synthetic peptide of G protein alpha Q.
Purification	Polyclonal antibody was purified by immunogen affinity chromatography.

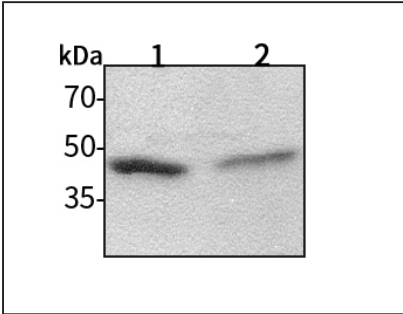
Anti-G protein alpha Q Rabbit pAb



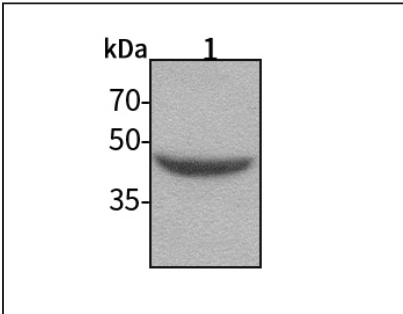
WL03665

For Research Use Only. Not For Use In Diagnostic Procedures

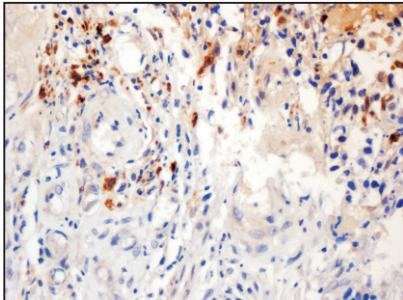
Product Images



Western blot-Anti-G protein alpha Q pAb
Lane 1: Human Hela cell lysate
Lane 2: Human MCF-7 cell lysate
All lanes: Anti-G protein alpha Q at 1:1000 dilution
Lysates/proteins at 20-50 µg per lane.
Predicted band size: 42 kDa
Observed band size: 42 kDa



Western blot-Anti-G protein alpha Q pAb
Lane 1: Mouse kidney tissue
All lanes: Anti-G protein alpha Q at 1:1000 dilution
Lysates/proteins at 20-50 µg per lane.
Predicted band size: 42 kDa
Observed band size: 42 kDa



Immunohistochemistry-Anti-G protein alpha Q pAb
Immunohistochemical analysis of paraffin-embedded human colon cancer using anti-G protein alpha Q Rabbit Antibody at 1:200 dilution.
Perform heat mediated antigen retrieval with Tris-EDTA buffer pH 9.0

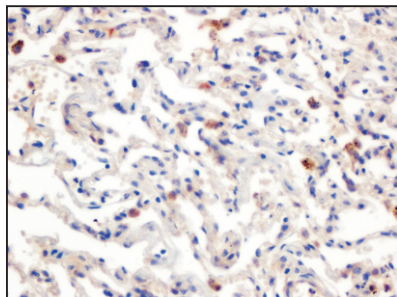
Anti-G protein alpha Q Rabbit pAb



WL03665

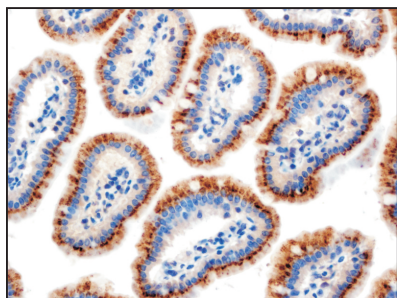
For Research Use Only. Not For Use In Diagnostic Procedures

Product Information



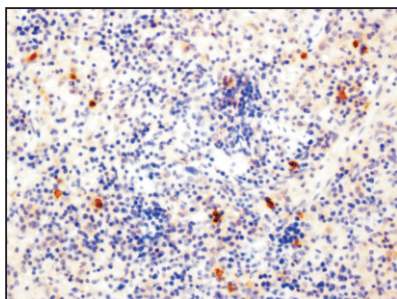
Immunohistochemistry-Anti-G protein alpha Q pAb

Immunohistochemical analysis of paraffin-embedded human lung cancer using anti-G protein alpha Q Rabbit Antibody at 1:200 dilution.
Perform heat mediated antigen retrieval with Tris-EDTA buffer pH 9.0



Immunohistochemistry-Anti-G protein alpha Q pAb

Immunohistochemical analysis of paraffin-embedded mouse intestine using anti-G protein alpha Q Rabbit Antibody at 1:200 dilution.
Perform heat mediated antigen retrieval with Tris-EDTA buffer pH 9.0



Immunohistochemistry-Anti-G protein alpha Q pAb

Immunohistochemical analysis of paraffin-embedded rat spleen tissue using anti-G protein alpha Q Rabbit Antibody at 1:200 dilution.
Perform heat mediated antigen retrieval with Tris-EDTA buffer pH 9.0