

Anti-IRF3 Rabbit pAb



WL02431

For Research Use Only. Not For Use In Diagnostic Procedures

Product Information

Product name	Anti-IRF3 Rabbit pAb	
Source	Rabbit	
Species reactivity	Human, Mouse, Rat	
Tested applications	WB	1:1000-1:2000
	IHC	1:300
	IF	1:300
Cellular localization	Cytoplasm. Nucleus. Mitochondrion.	
Pack size	50/100/200/500/1000μl	
Storage	Store at -20°C. Avoid freeze/thaw cycles.	
Storage buffer	Supplied in 20 mM phosphate (pH 7.5), 150 mM NaCl, 100 μg/ml	
	BSA, 50% glycerol and less than 0.02% sodium azide	

General Information

Background	IRF3 is a member of the interferon regulatory transcription factor (IRF) family. IRF3 has been further characterized and shown to contain several functional domains including a nuclear export signal, a DNA-binding domain, a C-terminal IRF association domain and several regulatory phosphorylation sites. IRF3 is found in an inactive cytoplasmic form that upon serine/threonine phosphorylation forms a complex with CREBBP. IRF3 can inhibit cell growth and plays a critical role in controlling the expression of genes in the innate immune response. Aggregated MAVS have been found to activate IRF3 dimerization.
Immunogen	Polyclonal antibody is produced by immunizing animals with a synthetic peptide of IRF3.
Purification	Polyclonal antibody was purified by Protein A affinity chromatography.

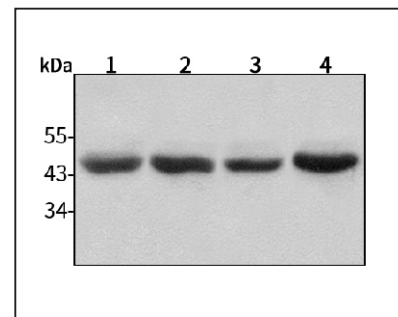
Anti-IRF3 Rabbit pAb



WL02431

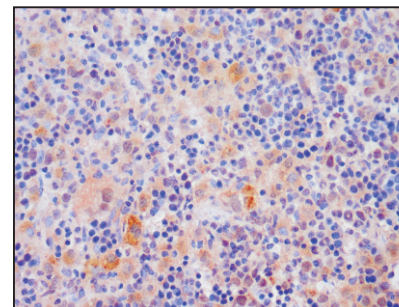
For Research Use Only. Not For Use In Diagnostic Procedures

Product Images



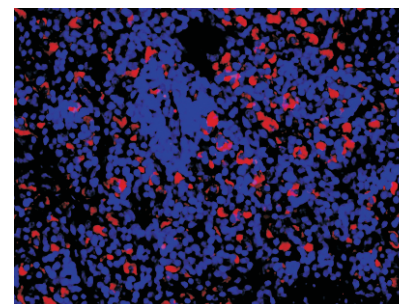
Western blot-Anti-IRF3 pAb

Lane 1: Human HepG2 cell lysate
Lane 2: Human Hela cell lysate
Lane 3: Human MGC-803 cell lysate
Lane 4: Human SGC-7901 cell lysate
All lanes: Anti-IRF3 at 1:1000 dilution
 Lysates/proteins at 20-50 μg per lane.
 Predicted band size: 47 kDa
 Observed band size: 47 kDa



Immunohistochemistry-Anti-IRF3 pAb

Immunohistochemical analysis of paraffin-embedded mouse spleen using anti-IRF3 Rabbit Antibody at 1:300 dilution.
 Perform heat mediated antigen retrieval with Tris-EDTA buffer pH 9.0



Immunofluorescence-Anti-IRF3 pAb

Immunofluorescence analysis of paraffin-embedded rat spleen using anti-IRF3 Rabbit Antibody at 1:300 dilution.
 Perform heat mediated antigen retrieval with Tris-EDTA buffer pH 9.0