

## Anti-Glut1 Rabbit pAb



WL01163

For Research Use Only. Not For Use In Diagnostic Procedures

## Product Information

<b>Product name</b>	Anti-Glut1 Rabbit pAb	
<b>Source</b>	Rabbit	
<b>Species reactivity</b>	Human, Mouse, Rat	
<b>Tested applications</b>	WB	1:500-1:1000
	IHC	1:200
	IF	1:200
<b>Cellular localization</b>	Cell membrane	
<b>Pack size</b>	50/100/200/500/1000μl	
<b>Storage</b>	Store at -20°C. <b>Avoid freeze/thaw cycles.</b>	
<b>Storage buffer</b>	Supplied in 20 mM phosphate (pH 7.5), 150 mM NaCl, 100 μg/ml	
	BSA, 50% glycerol and less than 0.02% sodium azide	

## General Information

<b>Background</b>	Glut1 is a major glucose transporter in the mammalian blood-brain barrier. Glut1 is found primarily in the cell membrane and on the cell surface, where it can also function as a receptor for human T-cell leukemia virus (HTLV) I and II. Mutations in this gene have been found in a family with paroxysmal exertion-induced dyskinesia.
<b>Immunogen</b>	Polyclonal antibody is produced by immunizing animals with a synthetic peptide of Glut1.
<b>Purification</b>	Polyclonal antibody was purified by immunogen affinity chromatography.

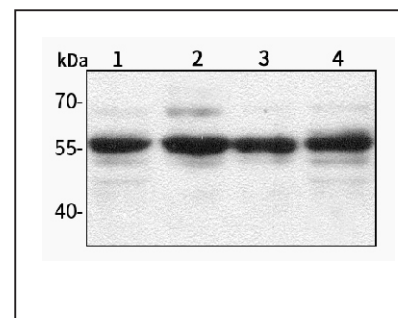
## Anti-Glut1 Rabbit pAb



WL01163

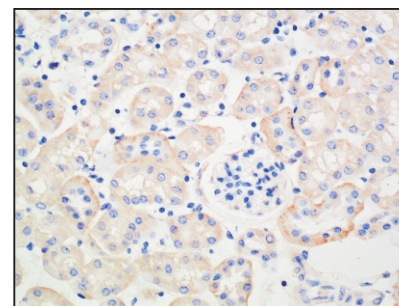
For Research Use Only. Not For Use In Diagnostic Procedures

## Product Images



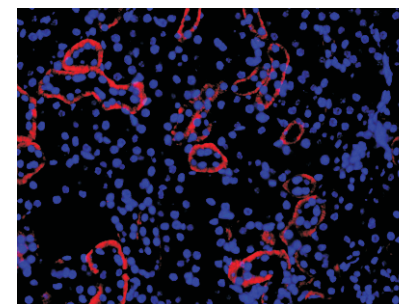
## Western blot-Anti-Glut1 pAb

Lane 1: Human MGC-803 cell lysate  
 Lane 2: Human SGC-7901 cell lysate  
 Lane 3: Human Caco2 cell lysate  
 Lane 4: Human MCF-7 cell lysate  
 All lanes: Anti-Glut1 at 1:1000 dilution  
 Lysates/proteins at 20-50 μg per lane.  
 Predicted band size: 55 kDa  
 Observed band size: 40-60 kDa



## Immunohistochemistry-Anti-Glut1 pAb

Immunohistochemical analysis of paraffin-embedded mouse kidney using anti-Glut1 Rabbit Antibody at 1:200 dilution.  
 Perform heat mediated antigen retrieval with Tris-EDTA buffer pH 9.0



## Immunofluorescence-Anti-Glut1 pAb

Immunofluorescence analysis of paraffin-embedded mouse kidney using anti-Glut1 Rabbit Antibody at 1:200 dilution.  
 Perform heat mediated antigen retrieval with Tris-EDTA buffer pH 9.0