

Anti-CYP11B2 Rabbit pAb



WL05257

For Research Use Only. Not For Use In Diagnostic Procedures

Product Information

Product name	Anti-CYP11B2 Rabbit pAb	
Source	Rabbit	
Species reactivity	Human, Mouse, Rat	
Tested applications	WB	1:1000-1:2000
	IHC	1:100-1:200
	IF	1:100-1:500

Cellular localization Mitochondrion membrane.

Pack size 50/100/200/500/1000μl

Storage Store at -20°C. **Avoid freeze/thaw cycles.**

Storage buffer Supplied in 20 mM phosphate (pH 7.5), 150 mM NaCl, 100 μg/ml

BSA, 50% glycerol and less than 0.02% sodium azide

General Information

Background CYP11B2 member of the cytochrome P450 superfamily of enzymes. The cytochrome P450 proteins are monooxygenases which catalyze many reactions involved in drug metabolism and synthesis of cholesterol, steroids and other lipids. This protein localizes to the mitochondrial inner membrane. The enzyme has steroid 18-hydroxylase activity to synthesize aldosterone and 18-oxocortisol as well as steroid 11 beta-hydroxylase activity.

Immunogen Polyclonal antibody is produced by immunizing animals with a synthetic peptide of CYP11B2.

Purification Polyclonal antibody was purified by Protein A affinity chromatography.

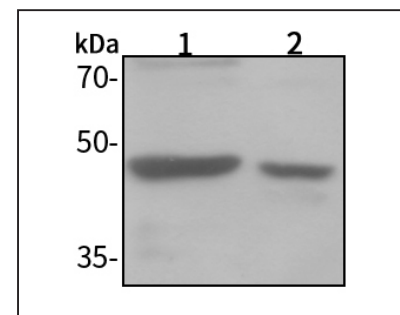
Anti-CYP11B2 Rabbit pAb



WL05257

For Research Use Only. Not For Use In Diagnostic Procedures

Product Images



Western blot-Anti-CYP11B2 pAb

Lane 1: Human Hela cell lysate

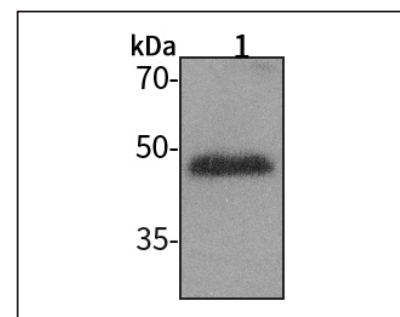
Lane 2: Human MCF-7 cell lysate

All lanes: Anti-CYP11B2 at 1:1000 dilution

Lysates/proteins at 20-50 μg per lane.

Predicted band size: 58 kDa

Observed band size: 48 kDa



Western blot-Anti-CYP11B2 pAb

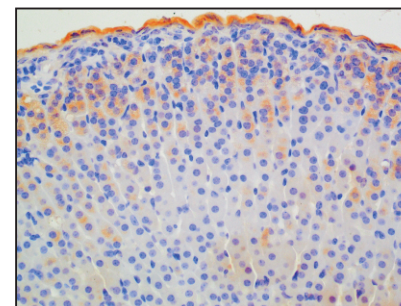
Lane 1: Mouse paranephros tissue lysate

All lanes: Anti-CYP11B2 at 1:1000 dilution

Lysates/proteins at 20-50 μg per lane.

Predicted band size: 58 kDa

Observed band size: 48 kDa



Immunohistochemistry-Anti-CYP11B2 pAb

Immunohistochemical analysis of paraffin-embedded mouse paranephros using anti-CYP11B2 Rabbit Antibody at 1:100 dilution.

Perform heat mediated antigen retrieval with Tris-EDTA buffer pH 9.0

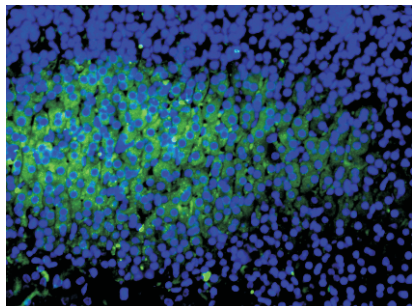
Anti-CYP11B2 Rabbit pAb



WL05257

For Research Use Only. Not For Use In Diagnostic Procedures

Product Information



Immunofluorescence-Anti-CYP11B2 pAb

Immunofluorescence analysis of paraffin-embedded mouse paranephros using anti-CYP11B2 Rabbit Antibody at 1:100 dilution.

Perform heat mediated antigen retrieval with Tris-EDTA buffer pH 9.0