

Anti-HSF1 Rabbit pAb



For Research Use Only. Not For Use In Diagnostic Procedures

WL02759

Product Information

Product name	Anti-HSF1 Rabbit pAb		
Source	Rabbit		
Species reactivity	Human, Mouse, Rat		
Tested applications	WB	1:1000-1:2000	
	IHC	1:100-1:400	
Cellular localization	Centromere, Chromosome, Cytoplasm, Cytoskeleton, Nucleus.		
Pack size	50/100/200/500/1000µl		
Storage	Store at -20°C. <b>Avoid freeze/thaw cycles.</b>		
Storage buffer	Supplied in 20 mM phosphate (pH 7.5), 150 mM NaCl, 100 µg/ml		
	BSA, 50% glycerol and less than 0.02% sodium azide		

General Information

Background	Heat shock factor protein 1 is a protein that in humans is encoded by the HSF1 gene. HSF1 exists as an inactive monomer in a complex with Hsp40/Hsp70 and Hsp90. Upon stress, such as elevated temperature, HSF1 is released from the chaperone complex and trimerizes. HSF1's target genes include major inducible heat shock proteins such as Hsp72, and noncoding RNA within Satellite III repeat regions. Its attenuation phase is initiated as a negative feedback loop with its gene product Hsp70 binding to its transactivation domain.
Immunogen	Polyclonal antibody is produced by immunizing animals with a synthetic peptide of HSF1.
Purification	Polyclonal antibody was purified by Protein A affinity chromatography.

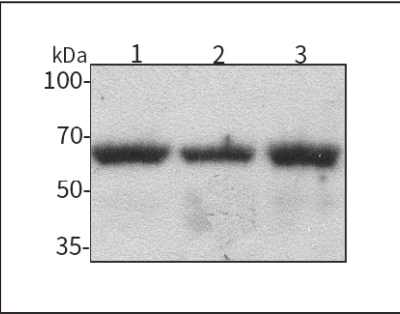
Anti-HSF1 Rabbit pAb



For Research Use Only. Not For Use In Diagnostic Procedures

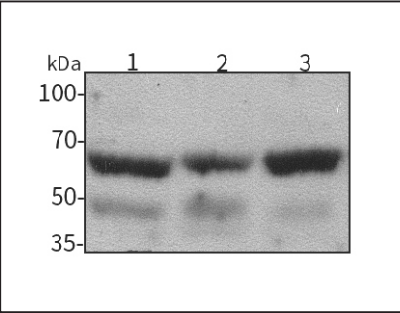
WL02759

Product Images



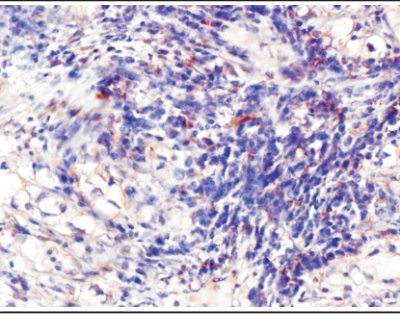
Western blot-Anti-HSF1 pAb

Lane 1: Human HepG2 cell lysate  
Lane 2: Human Hela cell lysate  
Lane 3: Human BGC-823 cell lysate  
All lanes: Anti-HSF1 at 1:1000 dilution  
Lysates/proteins at 20-50 µg per lane.  
Predicted band size: 57 kDa  
Observed band size: 57-82 kDa



Western blot-Anti-HSF1 pAb

Lane 1: Mouse kidney tissue lysate  
Lane 2: Mouse heart tissue lysate  
Lane 3: Rat lung tissue lysate  
All lanes: Anti-HSF1 at 1:1000 dilution  
Lysates/proteins at 20-50 µg per lane.  
Predicted band size: 57 kDa  
Observed band size: 57-82 kDa



Immunohistochemistry-Anti-HSF1 pAb

Immunohistochemical analysis of paraffin-embedded human stomach cancer using anti-HSF1 Rabbit Antibody at 1:300 dilution.  
Perform heat mediated antigen retrieval with Tris-EDTA buffer pH 9.0

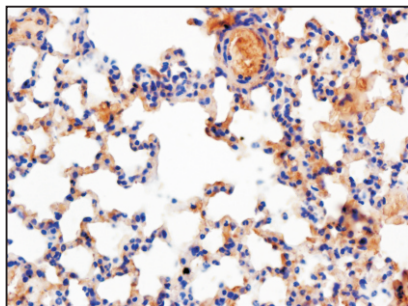
## Anti-HSF1 Rabbit pAb



For Research Use Only. Not For Use In Diagnostic Procedures

WL02759

### Product Information



#### Immunohistochemistry-Anti-HSF1 pAb

Immunohistochemical analysis of paraffin-embedded mouse lung (LPS treated) using anti-HSF1 Rabbit Antibody at 1:300 dilution.

Perform heat mediated antigen retrieval with Tris-EDTA buffer pH 9.0