

Anti-EPO Rabbit pAb



WL01513

For Research Use Only. Not For Use In Diagnostic Procedures

Product Information

Product name	Anti-EPO Rabbit pAb	
Source	Rabbit	
Species reactivity	Human, Mouse, Rat	
Tested applications	WB	1:500-1:1000
Pack size	50/100/200/500/1000µl	
Storage	Store at -20°C. Avoid freeze/thaw cycles.	
Storage buffer	Supplied in 20 mM phosphate (pH 7.5), 150 mM NaCl, 100 µg/ml BSA, 50% glycerol and less than 0.02% sodium azide	

General Information

Background

Erythropoietin, or Epo, is the primary factor responsible for regulating erythropoiesis during steady-state conditions and in response to blood loss and hemorrhage in the adult organism. It is a member of the EPO/TPO family and encodes a secreted, glycosylated cytokine composed of four alpha helical bundles. The protein is found in the plasma and regulates red cell production by promoting erythroid differentiation and initiating hemoglobin synthesis. In addition, Epo has also been shown to play a role in primitive embryonic erythropoiesis. Overexpression of Epo is associated with several pathophysiological conditions, such as polycythemia vera.

Immunogen

Polyclonal antibody is produced by immunizing animals with a synthetic peptide of EPO.

Purification

Polyclonal antibody was purified by immunogen affinity chromatography.

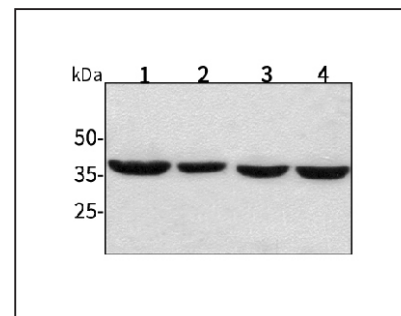
Anti-EPO Rabbit pAb



WL01513

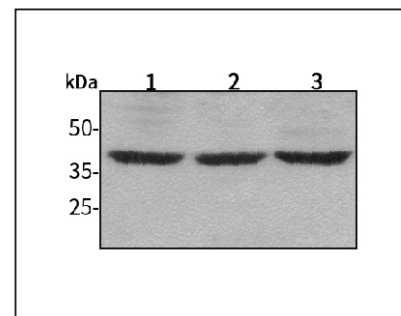
For Research Use Only. Not For Use In Diagnostic Procedures

Product Images



Western blot-Anti-EPO pAb

Lane 1: Human HepG2 cell lysate
Lane 2: Human Hela cell lysate
Lane 3: Human BGC-823 cell lysate
Lane 4: Human MGC-803 cell lysate
 All lanes: Anti-EPO at 1:1000 dilution
 Lysates/proteins at 20-50 µg per lane.
 Predicted band size: 21 kDa
 Observed band size: 37 kDa



Western blot-Anti-EPO pAb

Lane 1: Mouse kidney tissue lysate
Lane 2: Mouse heart tissue lysate
Lane 3: Rat lung tissue lysate
 All lanes: Anti-EPO at 1:1000 dilution
 Lysates/proteins at 20-50 µg per lane.
 Predicted band size: 21 kDa
 Observed band size: 37 kDa