

Anti-Gastrin Rabbit pAb



WL01220

For Research Use Only. Not For Use In Diagnostic Procedures

Product Information

Product name	Anti-Gastrin Rabbit pAb		
Source	Rabbit		
Species reactivity	Human, Mouse, Rat		
Tested applications	WB	1:1000-1:2000	
	IHC	1:100-1:400	
	IF	1:500	
Cellular localization	Secreted		
Pack size	50/100/200/500/1000μl		
Storage	Store at -20°C. Avoid freeze/thaw cycles.		
Storage buffer	Supplied in 20 mM phosphate (pH 7.5), 150 mM NaCl, 100 μg/ml		
	BSA, 50% glycerol and less than 0.02% sodium azide		

General Information

Background	Gastrin is mainly known by its first described role as a gastric acid-hormone but the protein also has the ability to promote cellular growth. More recently, gastrin has been suggested to induce leukocyte-endothelial cell interactions and to have a pro-inflammatory effect. High levels of Gastrin Releasing Peptide (GRP) are found in the human lung just after birth and levels decrease thereafter in parallel with the observed disease in number of pulmonary neuroendocrine cells. GRP is known to promote lung tumorigenesis in model systems and, interestingly, is induced by retinoic acid. GRP is involved in several functions with the hypothalamus, and is thought to play a role in regulating pituitary hormone secretion.
Immunogen	Polyclonal antibody is produced by immunizing animals with a synthetic peptide of Gastrin.
Purification	Polyclonal antibody was purified by protein A affinity chromatography.

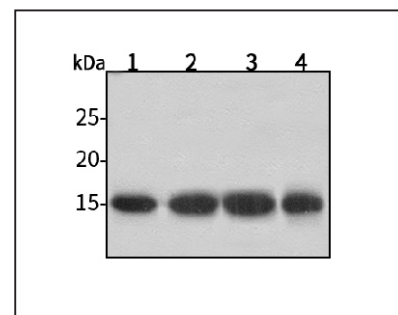
Anti-Gastrin Rabbit pAb



WL01220

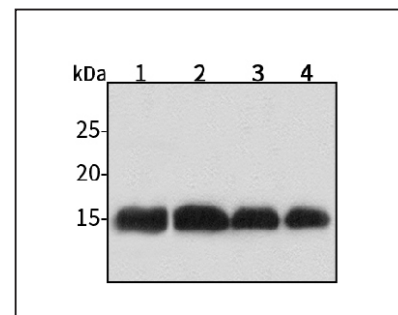
For Research Use Only. Not For Use In Diagnostic Procedures

Product Images



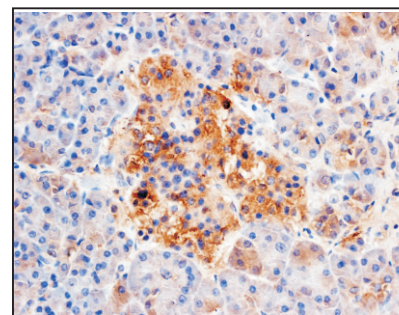
Western blot-Anti-Gastrin pAb

Lane 1: Human HepG2 cell lysate
 Lane 2: Human Hela cell lysate
 Lane 3: Human BGC-823 cell lysate
 Lane 4: Human MGC-803 cell lysate
 All lanes: Anti-Gastrin at 1:1000 dilution
 Lysates/proteins at 20-50 μg per lane.
 Predicted band size: 14 kDa
 Observed band size: 14 kDa



Western blot-Anti-Gastrin pAb

Lane 1: Mouse brain tissue lysate
 Lane 2: Mouse kidney tissue lysate
 Lane 3: Mouse heart tissue lysate
 Lane 4: Rat liver tissue lysate
 All lanes: Anti-Gastrin at 1:1000 dilution
 Lysates/proteins at 20-50 μg per lane.
 Predicted band size: 14 kDa
 Observed band size: 14 kDa



Immunohistochemistry-Anti-Gastrin pAb

Immunohistochemical analysis of paraffin-embedded human pancreatic cancer using anti-Gastrin Rabbit Antibody at 1:200 dilution. Perform heat mediated antigen retrieval with Tris-EDTA buffer pH 9.0

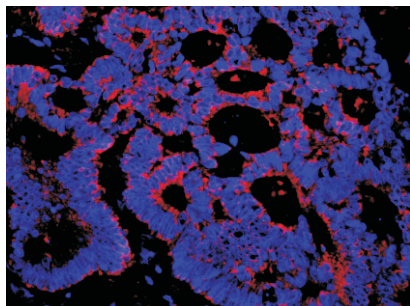
Anti-Gastrin Rabbit pAb



WL01220

For Research Use Only. Not For Use In Diagnostic Procedures

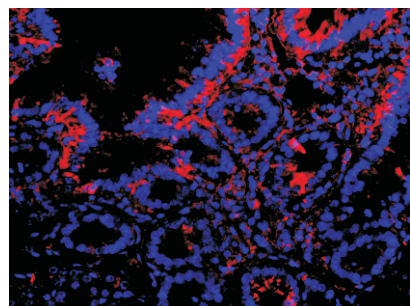
Product Information



Immunofluorescence-Anti-Gastrin pAb

Immunofluorescence analysis of paraffin-embedded human rectum cancer using anti-Gastrin Rabbit Antibody at 1:500 dilution.

Perform heat mediated antigen retrieval with Tris-EDTA buffer pH 9.0



Immunofluorescence-Anti-Gastrin pAb

Immunofluorescence analysis of paraffin-embedded mouse intestine using anti-Gastrin Rabbit Antibody at 1:500 dilution.

Perform heat mediated antigen retrieval with Tris-EDTA buffer pH 9.0