

Anti-Mitofusin 2/Mfn2 Rabbit pAb



WL06347

For Research Use Only. Not For Use In Diagnostic Procedures

Product Information

Product name	Anti-Mitofusin 2/Mfn2 Rabbit pAb	
Source	Rabbit	
Species reactivity	Human, Mouse, Rat, Cow	
Tested applications	WB	1:500-1:1000
	IF	1:50-1:200
Cellular localization	Mitochondrion outer membrane	
Pack size	50/100/200/500/1000μl	
Storage	Store at -20°C. Avoid freeze/thaw cycles.	
Storage buffer	Supplied in 20 mM phosphate (pH 7.5), 150 mM NaCl, 100 μg/ml	
	BSA, 50% glycerol and less than 0.02% sodium azide	

General Information

Background	MFN2, also named as CPRP1 and KIAA0214, belongs to the mitofusin family. It is an Essential transmembrane GTPase, which mediates mitochondrial fusion. This protein is involved in the regulation of vascular smooth muscle cell proliferation, and it may play a role in the pathophysiology of obesity. Defects in MFN2 are the cause of Charcot-Marie-Tooth disease type 2A2 (CMT2A2).
Immunogen	Polyclonal antibody is produced by immunizing animals with a synthetic peptide of Mitofusin 2/Mfn2.
Purification	Polyclonal antibody was purified by immunogen affinity chromatography.

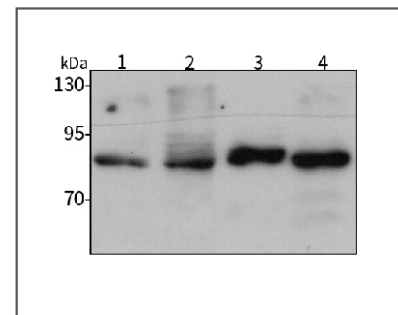
Anti-Mitofusin 2/Mfn2 Rabbit pAb



WL06347

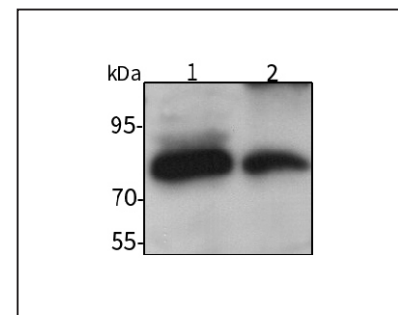
For Research Use Only. Not For Use In Diagnostic Procedures

Product Images



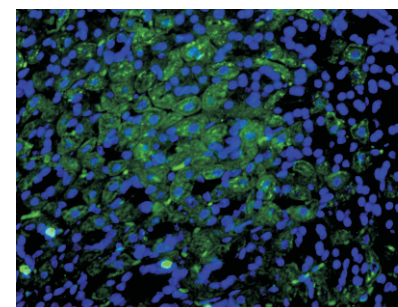
Western blot-Anti-Mitofusin 2/Mfn2 pAb

Lane 1: Human Hela cell lysate
 Lane 2: Human HEK-293 cell lysate
 Lane 3: Human HCT-116 cell lysate
 Lane 4: Human MDA-MB-231 cell lysate
 All lanes: Anti-Mitofusin 2/Mfn2 at 1:1000 dilution
 Lysates/proteins at 20-50 μg per lane.
 Predicted band size: 86 kDa
 Observed band size: 86 kDa



Western blot-Anti-Mitofusin 2/Mfn2 pAb

Lane 1: Mouse heart tissue lysate
 Lane 2: Rat kidney tissue lysate
 All lanes: Anti-Mitofusin 2/Mfn2 at 1:1000 dilution
 Lysates/proteins at 20-50 μg per lane.
 Predicted band size: 86 kDa
 Observed band size: 86 kDa



Immunofluorescence-Anti-Mitofusin 2/Mfn2 pAb

Immunofluorescence analysis of paraffin-embedded mouse stomach using anti-Mitofusin 2/Mfn2 Rabbit Antibody at 1:100 dilution.
 Perform heat mediated antigen retrieval with Tris-EDTA buffer pH 9.0