

## Anti-YWHAE Rabbit pAb



WL00322

For Research Use Only. Not For Use In Diagnostic Procedures

## Product Information

<b>Product name</b>	Anti-YWHAE Rabbit pAb	
<b>Source</b>	Rabbit	
<b>Species reactivity</b>	Human, Mouse, Rat	
<b>Tested applications</b>	WB	1:500-1:1000
	IF	1:50-1:200
<b>Cellular localization</b>	Cytoplasm, Nucleus	
<b>Pack size</b>	50/100/200/500/1000μl	
<b>Storage</b>	Store at -20°C. <b>Avoid freeze/thaw cycles.</b>	
<b>Storage buffer</b>	Supplied in 20 mM phosphate (pH 7.5), 150 mM NaCl, 100 μg/ml	
	BSA, 50% glycerol and less than 0.02% sodium azide	

## General Information

<b>Background</b>	14-3-3 epsilon (also known as YWHAE) is a member of 14-3-3 proteins which were the first phosphoserine/phosphothreonine-binding proteins to be discovered. 14-3-3 family members interact with a wide spectrum of proteins and possess diverse functions. This highly conserved protein family is found in both plants and mammals, and this protein is 100% identical to the mouse ortholog.
<b>Immunogen</b>	Polyclonal antibody is produced by immunizing animals with a synthetic peptide of YWHAE.
<b>Purification</b>	Polyclonal antibody was purified by immunogen affinity chromatography.

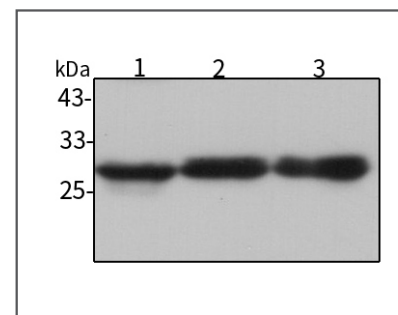
## Anti-YWHAE Rabbit pAb



WL00322

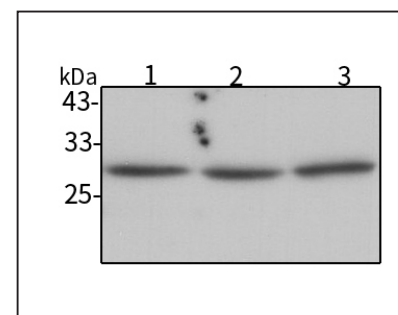
For Research Use Only. Not For Use In Diagnostic Procedures

## Product Images



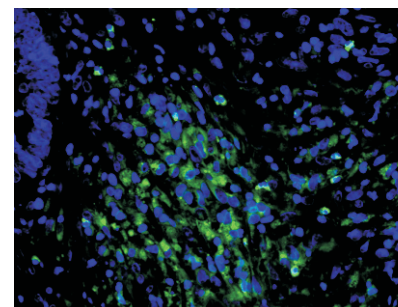
## Western blot-Anti-YWHAE pAb

Lane 1: Human Hela cell lysate  
 Lane 2: Human HCT116 cell lysate  
 Lane 3: Human HUVEC cell lysate  
 All lanes: Anti-YWHAE at 1:1000 dilution  
 Lysates/proteins at 20-50 μg per lane.  
 Predicted band size: 29 kDa  
 Observed band size: 29 kDa



## Western blot-Anti-YWHAE pAb

Lane 1: Mouse heart tissue lysate  
 Lane 2: Mouse liver tissue lysate  
 Lane 3: Mouse lung tissue lysate  
 All lanes: Anti-YWHAE at 1:1000 dilution  
 Lysates/proteins at 20-50 μg per lane.  
 Predicted band size: 29 kDa  
 Observed band size: 29 kDa



## Immunofluorescence-Anti-YWHAE pAb

Immunofluorescence analysis of paraffin-embedded human colon cancer using anti-YWHAE Rabbit Antibody at 1:100 dilution.  
 Perform heat mediated antigen retrieval with Tris-EDTA buffer pH 9.0

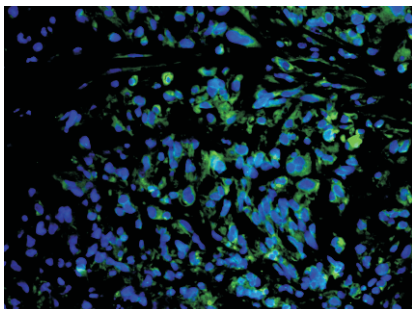


## Anti-YWHAE Rabbit pAb

WL00322

For Research Use Only. Not For Use In Diagnostic Procedures

### Product Information



#### Immunofluorescence-Anti-YWHAE pAb

Immunofluorescence analysis of paraffin-embedded human brain glioma using anti-YWHAE Rabbit Antibody at 1:100 dilution.

Perform heat mediated antigen retrieval with Tris-EDTA buffer pH 9.0