

Anti-LAMA1Rabbit pAb



WLR032

For Research Use Only. Not For Use In Diagnostic Procedures

Product Information

Product name	Anti-LAMA1Rabbit pAb		
Source	Rabbit		
Species reactivity	Human, Mouse, Rat		
Tested applications	WB	1:-1000-1:2000	
	IHC, IF	1:100-1:500	
Cellular localization	Secreted, extracellular space, extracellular matrix, basement membrane.		
Pack size	50/100/200/500/1000μl		
Storage	Store at -20°C. Avoid freeze/thaw cycles.		
Storage buffer	Supplied in 20 mM phosphate (pH 7.5), 150 mM NaCl, 100 μg/ml		
	BSA, 50% glycerol and less than 0.02% sodium azide		

General Information

Background	Binding to cells via a high affinity receptor, laminin is thought to mediate the attachment, migration and organization of cells into tissues during embryonic development by interacting with other extracellular matrix components. Mutations in this gene may be associated with Poretti-Boltshauser syndrome.
Immunogen	Polyclonal antibody is produced by immunizing animals with a synthetic peptide of cleaved N-terminal LAMA1.
Purification	Polyclonal antibody was purified by Protein A affinity chromatography.

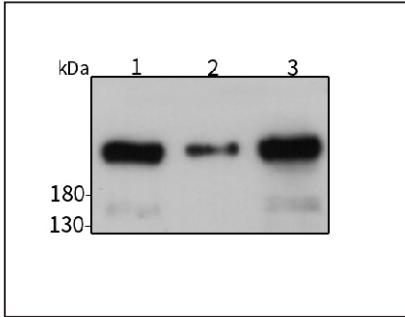
Anti-p-LAMA1 Rabbit pAb



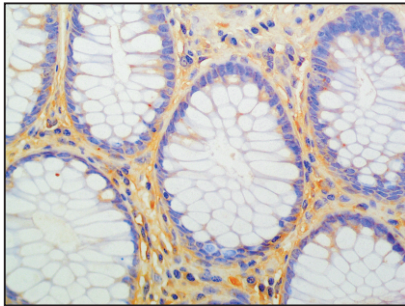
WLR032

For Research Use Only. Not For Use In Diagnostic Procedures

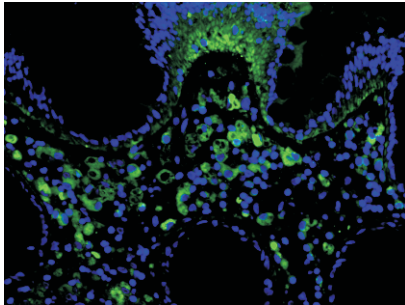
Product Images



Western blot-Anti-LAMA1pAb
Lane 1: Human MDA-MB-231 cell lysate
Lane 2: Human A549 cell lysate
Lane 3: Human HUVEC cell lysate
All lanes: Anti-LAMA1 at 1:1000 dilution
Lysates/proteins at 20-50 µg per lane.
Predicted band size: 337 kDa
Observed band size: 337 kDa



Immunohistochemistry-Anti-LAMA1 pAb
Immunohistochemical analysis of paraffin-embedded human colon cancer using anti-LAMA1 Rabbit Antibody at 1:200 dilution.
Perform heat mediated antigen retrieval with Tris-EDTA buffer pH 9.0



Immunofluorescence-Anti-LAMA1 pAb
Immunofluorescence analysis of paraffin-embedded human colon cancer using anti-LAMA1 Rabbit Antibody at 1:200 dilution.
Perform heat mediated antigen retrieval with Tris-EDTA buffer pH 9.0