

Anti-IL15 Rabbit pAb



WL04219

For Research Use Only. Not For Use In Diagnostic Procedures

Product Information

Product name	Anti-IL15 Rabbit pAb	
Source	Rabbit	
Species reactivity	Human, Mouse, Rat, Rabbit	
Tested applications	WB	1:500-1:1000
	IHC, IF	1:100-1:400
Cellular localization	Secreted and Cytoplasm. Nucleus	
Pack size	50/100/200/500/1000μl	
Storage	Store at -20°C. Avoid freeze/thaw cycles.	
Storage buffer	Supplied in 20 mM phosphate (pH 7.5), 150 mM NaCl, 100 μg/ml	
	BSA, 50% glycerol and less than 0.02% sodium azide	

General Information

Background

Interleukin-15 (IL15), also designated IL-T, is a cloned cytokine which shares several biological activities but no sequence homology with IL2. IL15 stimulates the proliferation of T cells and NK cells, while enhancing B cell expansion and antibody production. Unlike IL2, IL15 is not produced by lymphocytes, but appears to be produced by macrophages, epithelial lines, muscle and placenta. IL15 has also been shown to be a chemoattractant for human blood T lymphocytes and to be able to induce lymphokine-activated killer (LAK) activity in NK cells as well as to be able to induce the generation of cytolytic effector cells. Studies have shown that IL15 is the only other cytokine that shares the β signaling subunit of the IL2R.

Immunogen

Polyclonal antibody is produced by immunizing animals with a synthetic peptide of IL15.

Purification

Polyclonal antibody was purified by immunogen affinity chromatography.

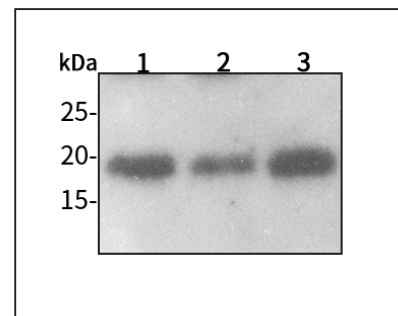
Anti-IL15 Rabbit pAb



WL04219

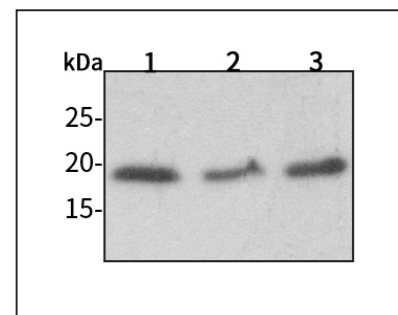
For Research Use Only. Not For Use In Diagnostic Procedures

Product Images



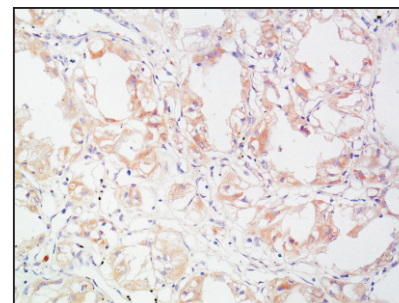
Western blot-Anti-IL15 pAb

Lane 1: Human Hela cell lysate
 Lane 2: Human MCF-7 cell lysate
 Lane 3: Human HEK-293 cell lysate
 All lanes: Anti-IL15 at 1:1000 dilution
 Lysates/proteins at 20-50 μg per lane.
 Predicted band size: 18 kDa
 Observed band size: 18 kDa



Western blot-Anti-IL15 pAb

Lane 1: Mouse liver tissue lysate
 Lane 2: Mouse colon tissue lysate
 Lane 3: Rat stomach tissue lysate
 All lanes: Anti-IL15 at 1:1000 dilution
 Lysates/proteins at 20-50 μg per lane.
 Predicted band size: 18 kDa
 Observed band size: 18 kDa



Immunohistochemistry-Anti-IL15 pAb

Immunohistochemical analysis of paraffin-embedded human kidney cancer using anti-IL15 Rabbit Antibody at 1:200 dilution.
 Perform heat mediated antigen retrieval with Tris-EDTA buffer pH 9.0

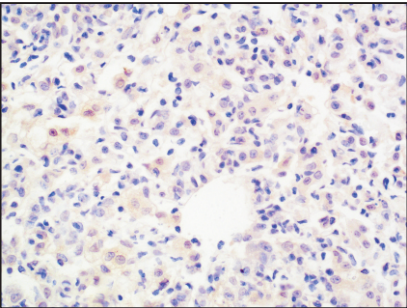
Anti-IL15 Rabbit pAb



WL04219

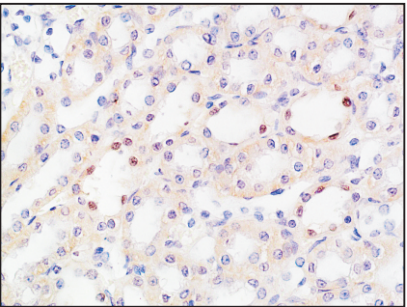
For Research Use Only. Not For Use In Diagnostic Procedures

Product Information



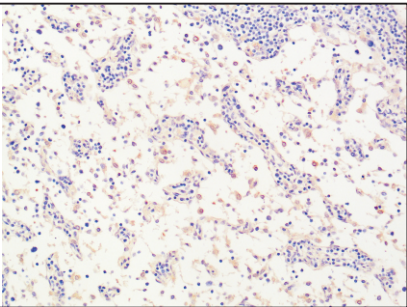
Immunohistochemistry-Anti-IL15 pAb

Immunohistochemical analysis of paraffin-embedded rat lung using anti-IL15 Rabbit Antibody at 1:200 dilution.
Perform heat mediated antigen retrieval with Tris-EDTA buffer pH 9.0



Immunohistochemistry-Anti-IL15 pAb

Immunohistochemical analysis of paraffin-embedded rat kidney using anti-IL15 Rabbit Antibody at 1:200 dilution.
Perform heat mediated antigen retrieval with Tris-EDTA buffer pH 9.0



Immunohistochemistry-Anti-IL15 pAb

Immunohistochemical analysis of paraffin-embedded rabbit thymus using anti-IL15 Rabbit Antibody at 1:200 dilution.
Perform heat mediated antigen retrieval with Tris-EDTA buffer pH 9.0

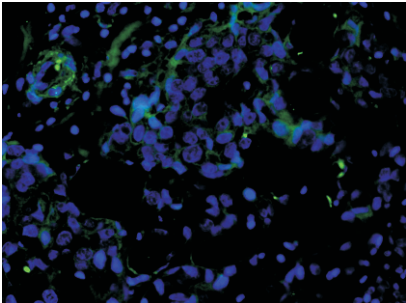
Anti-IL15 Rabbit pAb



WL04219

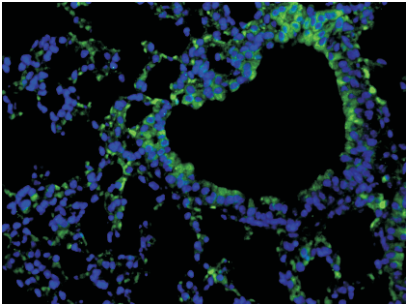
For Research Use Only. Not For Use In Diagnostic Procedures

Product Information



Immunofluorescence-Anti-IL15 pAb

Immunofluorescence analysis of paraffin-embedded human breast cancer using anti-IL15 Rabbit Antibody at 1:100 dilution.
Perform heat mediated antigen retrieval with Tris-EDTA buffer pH 9.0



Immunofluorescence-Anti-IL15 pAb

Immunofluorescence analysis of paraffin-embedded mouse lung using anti-IL15 Rabbit Antibody at 1:100 dilution.
Perform heat mediated antigen retrieval with Tris-EDTA buffer pH 9.0