

Anti-E2F4 Rabbit pAb



WL01312

For Research Use Only. Not For Use In Diagnostic Procedures

Product Information

Product name	Anti-E2F4 Rabbit pAb	
Source	Rabbit	
Species reactivity	Human, Mouse, Rat	
Tested applications	WB	1:1000-1:2000
	IHC	1:500
	IF	1:500
Cellular localization	Nucleus	
Pack size	50/100/200/500/1000μl	
Storage	Store at -20°C. Avoid freeze/thaw cycles.	
Storage buffer	Supplied in 20 mM phosphate (pH 7.5), 150 mM NaCl, 100 μg/ml	
	BSA, 50% glycerol and less than 0.02% sodium azide	

General Information

Background	The protein encoded by this gene is a member of the E2F family of transcription factors. The E2F family plays a crucial role in the control of cell cycle and action of tumor suppressor proteins and is also a target of the transforming proteins of small DNA tumor viruses. This protein binds to all three of the tumor suppressor proteins pRB, p107 and p130, but with higher affinity to the last two. It plays an important role in the suppression of proliferation-associated genes, and its gene mutation and increased expression may be associated with human cancer. E2F4 has been shown to interact with Smad3.
Immunogen	Polyclonal antibody is produced by immunizing animals with a synthetic peptide of E2F4.
Purification	Polyclonal antibody was purified by Protein A affinity chromatography.

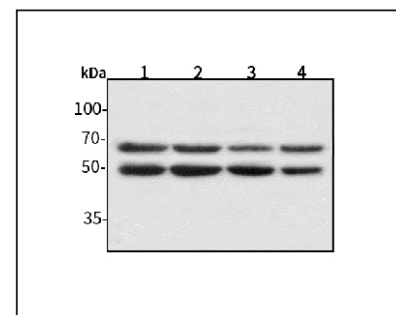
Anti-E2F4 Rabbit pAb



WL01312

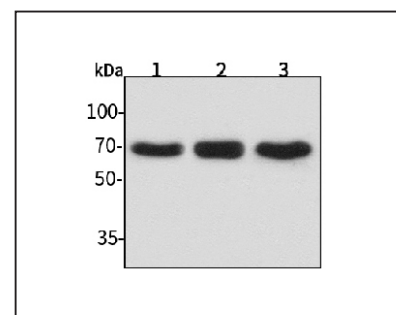
For Research Use Only. Not For Use In Diagnostic Procedures

Product Images



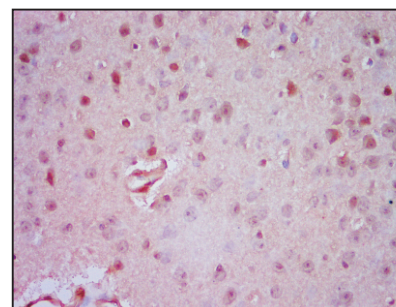
Western blot-Anti-E2F4 pAb

Lane 1: Human HepG2 cell lysate
 Lane 2: Human Hela cell lysate
 Lane 3: Human BGC-823 cell lysate
 Lane 4: Human MGC-803 cell lysate
 All lanes: Anti-E2F4 at 1:1000 dilution
 Lysates/proteins at 20-50 μg per lane.
 Predicted band size: 44 kDa
 Observed band size: 60 kDa



Western blot-Anti-E2F4 pAb

Lane 1: Mouse kidney tissue lysate
 Lane 2: Mouse liver tissue lysate
 Lane 3: Rat spleen tissue lysate
 All lanes: Anti-E2F4 at 1:1000 dilution
 Lysates/proteins at 20-50 μg per lane.
 Predicted band size: 44 kDa
 Observed band size: 60 kDa



Immunohistochemistry-Anti-E2F4 pAb

Immunohistochemical analysis of paraffin-embedded mouse brain using anti-E2F4 Rabbit Antibody at 1:500 dilution.
 Perform heat mediated antigen retrieval with Tris-EDTA buffer pH 9.0