

Anti-IL-22RA1 Rabbit pAb



WL04686

For Research Use Only. Not For Use In Diagnostic Procedures

Product Information

Product name	Anti-HOXA7 Rabbit pAb	
Source	Rabbit	
Species reactivity	Human, Mouse, Rat	
Tested applications	WB	1:1000 -1:2000
Pack size	50/100/200/500/1000µl	
Storage	Store at -20°C. Avoid freeze/thaw cycles.	
Storage buffer	Supplied in 20 mM phosphate (pH 7.5), 150 mM NaCl, 100 µg/ml BSA, 50% glycerol and less than 0.02% sodium azide	

General Information

Background	IL22R belongs to the class II cytokine receptor family, and has been shown to be a receptor for interleukin 22 (IL22). IL22 receptor is a protein complex that consists of this protein and interleukin 10 receptor, beta (IL10BR/CRFB4), a subunit also shared by the receptor complex for interleukin 10 (IL10). This gene and interleukin 28 receptor, alpha (IL28RA) form a cytokine receptor gene cluster in the chromosomal region 1p36.
-------------------	--

Immunogen	Polyclonal antibody is produced by immunizing animals with a synthetic peptide of IL-22RA1.
------------------	---

Purification	Polyclonal antibody was purified by Protein A affinity chromatography.
---------------------	--

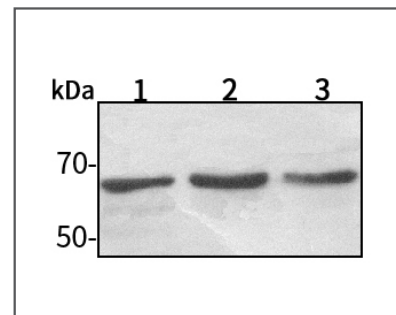
Anti-IL-22RA1 Rabbit pAb



WL04686

For Research Use Only. Not For Use In Diagnostic Procedures

Product Images



Western blot-Anti-IL-22RA1 pAb

Lane 1: Human MCF-7 cell lysate

Lane 2: Human HEK-293 cell lysate

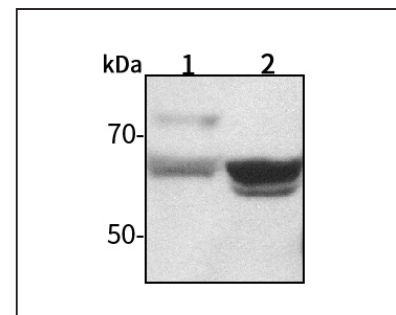
Lane 3: Human A549 cell lysate

All lanes: Anti-IL-22RA1 at 1:1000 dilution

Lysates/proteins at 20-50 µg per lane.

Predicted band size: 64 kDa

Observed band size: 64 kDa



Western blot-Anti-IL-22RA1 pAb

Lane 1: Mouse liver tissue lysate

Lane 2: Rat lung tissue lysate

All lanes: Anti-IL-22RA1 at 1:1000 dilution

Lysates/proteins at 20-50 µg per lane.

Predicted band size: 64 kDa

Observed band size: 64 kDa