

Anti-IGF1 Rabbit pAb



WL04589

For Research Use Only. Not For Use In Diagnostic Procedures

Product Information

Product name	Anti-IGF1 Rabbit pAb		
Source	Rabbit		
Species reactivity	Human, Mouse, Rat		
Tested applications	WB	1:1000-1:2000	
Pack size	50/100/200/500/1000µl		
Storage	Store at -20°C. Avoid freeze/thaw cycles.		
Storage buffer	Supplied in 20 mM phosphate (pH 7.5), 150 mM NaCl, 100 µg/ml BSA, 50% glycerol and less than 0.02% sodium azide		

General Information

Background

IGF1B belongs to the insulin family. Insulin-like growth factor I, or IGF-I, is an ubiquitous peptide that acts in both an autocrine and paracrine fashion to stimulate the growth of vascular smooth muscle cells. IGF function is modulated by at least six circulating IGF-binding proteins, designated IGFBP1-6, which associate with the soluble growth factor. Defects in IGF1 are the cause of insulin-like growth factor I deficiency (IGF1 deficiency) which is an autosomal recessive disorder characterized by growth retardation, sensorineural deafness and mental retardation.

Immunogen

Polyclonal antibody is produced by immunizing animals with a synthetic peptide of IGF1.

Purification

Polyclonal antibody was purified Protein A affinity chromatography.

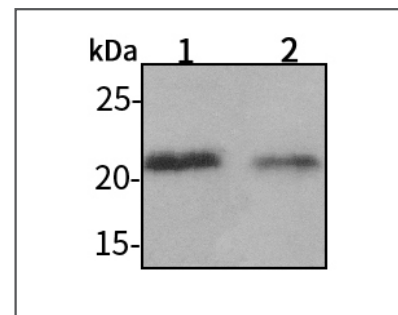
Anti-IGF1 Rabbit pAb



WL04589

For Research Use Only. Not For Use In Diagnostic Procedures

Product Images



Western blot-Anti-IGF1 pAb

Lane 1: Human HeLa cell lysate

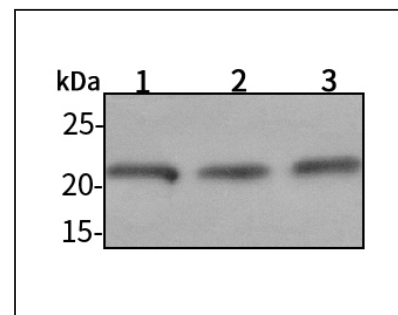
Lane 2: Human MCF-7 cell lysate

All lanes: Anti-IGF1 at 1:1000 dilution

Lysates/proteins at 20-50 µg per lane.

Predicted band size: 22 kDa

Observed band size: 22 kDa



Western blot-Anti-IGF1 pAb

Lane 1: Rat lung tissue lysate

Lane 2: Rat colon tissue lysate

Lane 3: Rat stomach tissue lysate

All lanes: Anti-IGF1 at 1:1000 dilution

Lysates/proteins at 20-50 µg per lane.

Predicted band size: 22 kDa

Observed band size: 22 kDa