

Anti-HIF2 α /EPAS1 Rabbit pAb

WLA0534

For Research Use Only. Not For Use In Diagnostic Procedures

Product Information

Product name	Anti-HIF2 α /EPAS1 Rabbit pAb	
Source	Rabbit	
Species reactivity	Human, Mouse, Rat	
Tested applications	WB	1:500-1:1000
	IHC, IF	1:50-1:200
Cellular localization	Nucleus.	
Pack size	50/100/200/500/1000 μ l	
Storage	Store at -20°C. Avoid freeze/thaw cycles.	
Storage buffer	Supplied in 20 mM phosphate (pH 7.5), 150 mM NaCl, 100 μ g/ml	
	BSA, 50% glycerol and less than 0.02% sodium azide	

General Information

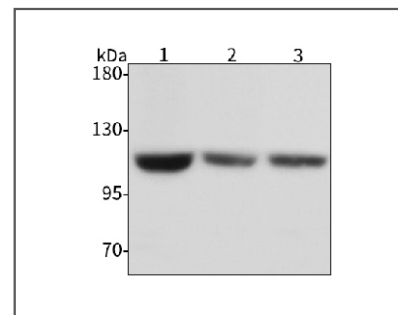
Background	Hif2a, also known as EPAS1, is a transcription factor that participates in the induction of oxygen regulated genes and is induced with the decline of oxygen levels. Hif2a regulates the expression of vascular endothelial growth factor (VEGF), which may be involved in the development of vascular and pulmonary tubular system. Hif2a may also play a role in the formation of endothelial cells, resulting in the formation of blood-brain barrier. It is an effective activator of Tie-2 tyrosine kinase expression. Activation requires recruitment of transcriptional coactivators, such as crebbp and possibly ep300. Interaction with the redox regulator APEX1 seems to activate ctad.
Immunogen	Polyclonal antibody is produced by immunizing animals with a synthetic peptide of HIF2 α /EPAS1.
Purification	Polyclonal antibody was purified by immunogen affinity chromatography.

Anti-HIF2 α /EPAS1 Rabbit pAb

WLA0534

For Research Use Only. Not For Use In Diagnostic Procedures

Product Images

Western blot-Anti-HIF2 α /EPAS1 pAb

Lane 1: Human Hela cell lysate

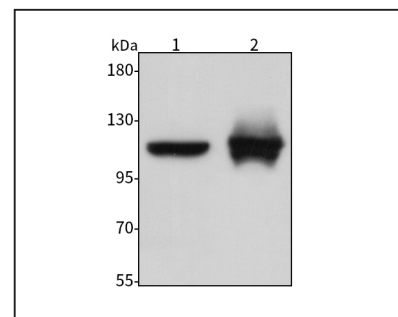
Lane 2: Human HEK293 cell lysate

Lane 3: Rat RSC96 cell lysate

All lanes: Anti-HIF2 α /EPAS1 at 1:1000 dilutionLysates/proteins at 20-50 μ g per lane.

Predicted band size: 96 kDa

Observed band size: 100-120 kDa

Western blot-Anti-HIF2 α /EPAS1 pAb

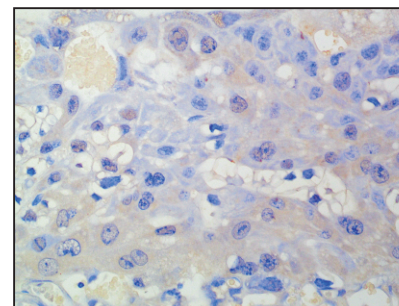
Lane 1: Mouse kidney tissue lysate

Lane 2: Mouse liver tissue lysate

All lanes: Anti-HIF2 α /EPAS1 at 1:1000 dilutionLysates/proteins at 20-50 μ g per lane.

Predicted band size: 96 kDa

Observed band size: 100-120 kDa

Immunohistochemistry-Anti-HIF2 α /EPAS1 pAbImmunohistochemical analysis of paraffin-embedded mouse placenta using anti-HIF2 α /EPAS1 Rabbit Antibody at 1:100 dilution.

Perform heat mediated antigen retrieval with Tris-EDTA buffer pH 9.0

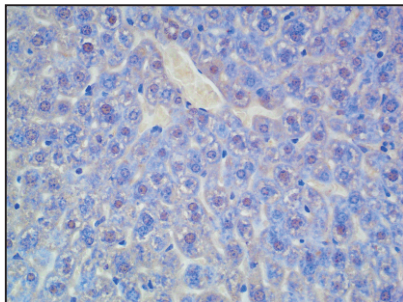
Anti-HIF2 α /EPAS1 Rabbit pAb



WLA0534

For Research Use Only. Not For Use In Diagnostic Procedures

Product Information



Immunohistochemistry-Anti-HIF2 α /EPAS1 pAb

Immunohistochemical analysis of paraffin-embedded mouse liver using anti-HIF2 α /EPAS1 Rabbit Antibody at 1:100 dilution.

Perform heat mediated antigen retrieval with Tris-EDTA buffer pH 9.0