

Anti-EphA2 Rabbit pAb



WL0182

For Research Use Only. Not For Use In Diagnostic Procedures

Product Information

Product name	Anti-EphA2 Rabbit pAb	
Source	Rabbit	
Species reactivity	Human, Mouse	
Tested applications	WB	1:500-1:1000
	IHC	1:200
	IF	1:200
Cellular localization	Membrane	
Pack size	50/100/200/500/1000μl	
Storage	Store at -20°C. Avoid freeze/thaw cycles.	
Storage buffer	Supplied in 20 mM phosphate (pH 7.5), 150 mM NaCl, 100 μg/ml	
	BSA, 50% glycerol and less than 0.02% sodium azide	

General Information

Background	EphA2 belongs to the ephrin receptor subfamily of the protein-tyrosine kinase family. EPH and EPH-related receptors have been implicated in mediating developmental events, particularly in the nervous system. In normal cells, EphA2 negatively regulates cell growth and invasiveness. EphA2 is overexpressed by many human cancers, and is often associated with poor prognostic features. The clinical significance of the expression of EphA2 was observed in breast, prostate, colon, skin, cervical, ovarian, and lung cancers. EphA2 may serve as a novel target for bladder cancer, colonic adenocarcinoma and ovarian cancer therapy.
Immunogen	Polyclonal antibody is produced by immunizing animals with a synthetic peptide of EphA2.
Purification	Polyclonal antibody was purified by immunogen affinity chromatography.

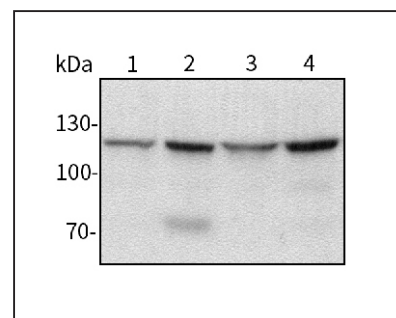
Anti-EphA2 Rabbit pAb



WL0182

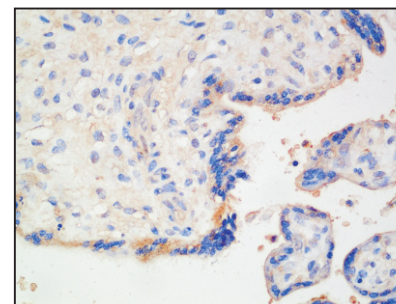
For Research Use Only. Not For Use In Diagnostic Procedures

Product Images



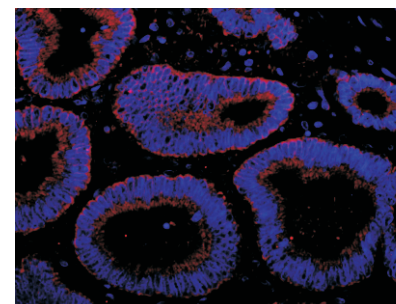
Western blot-Anti-EphA2 pAb

Lane 1: Human HeLa cell lysate
 Lane 2: Human BGC-823 cell lysate
 Lane 3: Human MGC-803 cell lysate
 Lane 4: Human SGC-7901 cell lysate
 All lanes: Anti-EphA2 at 1:1000 dilution
 Lysates/proteins at 20-50 μg per lane.
 Predicted band size: 108 kDa
 Observed band size: 108-130 kDa



Immunohistochemistry-Anti-EphA2 pAb

Immunohistochemical analysis of paraffin-embedded human eclampsia placenta using anti-EphA2 Rabbit Antibody at 1:200 dilution.
 Perform heat mediated antigen retrieval with Tris-EDTA buffer pH 9.0



Immunofluorescence-Anti-EphA2 pAb

Immunofluorescence analysis of paraffin-embedded human rectum cancer using anti-EphA2 Rabbit Antibody at 1:200 dilution.
 Perform heat mediated antigen retrieval with Tris-EDTA buffer pH 9.0

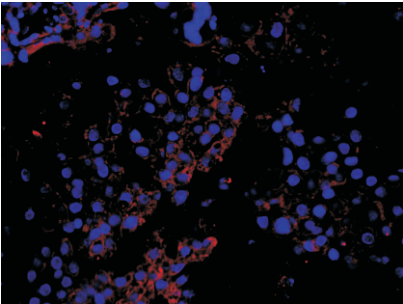
Anti-EphA2 Rabbit pAb



WL0182

For Research Use Only. Not For Use In Diagnostic Procedures

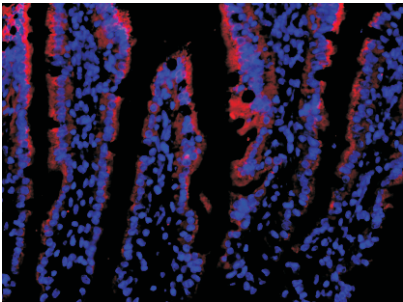
Product Information



Immunofluorescence-Anti-EphA2 pAb

Immunofluorescence analysis of paraffin-embedded human eclampsia placenta using anti-EphA2 Rabbit Antibody at 1:200 dilution.

Perform heat mediated antigen retrieval with Tris-EDTA buffer pH 9.0



Immunofluorescence-Anti-EphA2 pAb

Immunofluorescence analysis of paraffin-embedded mouse intestine using anti-EphA2 Rabbit Antibody at 1:200 dilution.

Perform heat mediated antigen retrieval with Tris-EDTA buffer pH 9.0