

Anti-Cyclophilin A/PPIA Rabbit pAb



WL00258

For Research Use Only. Not For Use In Diagnostic Procedures

Product Information

Product name	Anti-Cyclophilin A/PPIA Rabbit pAb		
Source	Rabbit		
Species reactivity	Human, Mouse, Rat, Cow		
Tested applications	WB	1:500-1:1000	
	IHC, IF	1:50-1:200	
Cellular localization	Cytoplasm, Nucleus, Secreted.		
Pack size	50/100/200/500/1000μl		
Storage	Store at -20°C. <b>Avoid freeze/thaw cycles.</b>		
Storage buffer	Supplied in 20 mM phosphate (pH 7.5), 150 mM NaCl, 100 μg/ml		
	BSA, 50% glycerol and less than 0.02% sodium azide		

General Information

Background	Cyclophilin A, also named as PPIA and Rotamase A, belongs to the cyclophilin-type PPIase family and PPIase A subfamily. PPIases accelerate the folding of proteins. It catalyzes the cis-trans isomerization of proline imidic peptide bonds in oligopeptides. PPIA forms a trimolecular complex with cyclophilin and calcineurins to inhibit calcineurin phosphatase activity. The encoded protein is a cyclosporin binding-protein and may play a role in cyclosporin A-mediated immunosuppression.
Immunogen	Polyclonal antibody is produced by immunizing animals with a synthetic peptide of Cyclophilin A/PPIA.
Purification	Polyclonal antibody was purified by immunogen affinity chromatography.

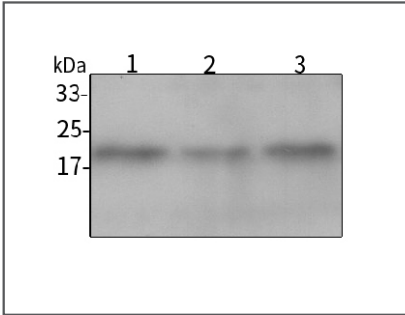
Anti-Cyclophilin A/PPIA Rabbit pAb



WL00258

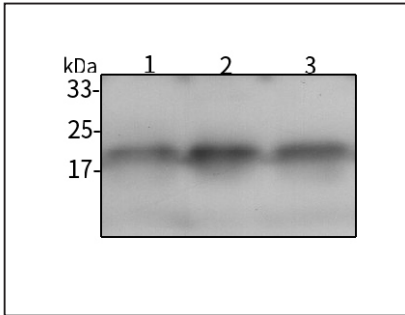
For Research Use Only. Not For Use In Diagnostic Procedures

Product Images



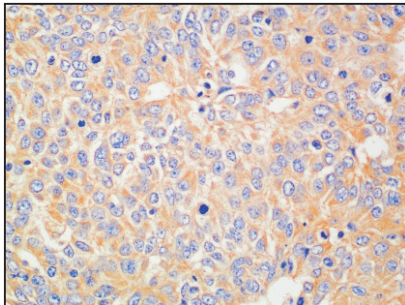
**Western blot-Anti-Cyclophilin A/PPIA pAb**

Lane 1: Human MBA-MB-231 cell lysate  
Lane 2: Human A549 cell lysate  
Lane 3: Human HCT116 cell lysate  
All lanes: Anti-Cyclophilin A/PPIA at 1:1000 dilution  
Lysates/proteins at 20-50 μg per lane.  
Predicted band size: 18 kDa  
Observed band size: 18 kDa



**Western blot-Anti-Cyclophilin A/PPIA pAb**

Lane 1: Mouse kidney tissue lysate  
Lane 2: Rat colon tissue lysate  
Lane 3: Rat lung tissue lysate  
All lanes: Anti-Cyclophilin A/PPIA at 1:1000 dilution  
Lysates/proteins at 20-50 μg per lane.  
Predicted band size: 18 kDa  
Observed band size: 18 kDa



**Immunohistochemistry-Anti-Cyclophilin A/PPIA pAb**

Immunohistochemical analysis of paraffin-embedded human breast cancer using anti-Cyclophilin A/PPIA Rabbit Antibody at 1:100 dilution. Perform heat mediated antigen retrieval with Tris-EDTA buffer pH 9.0

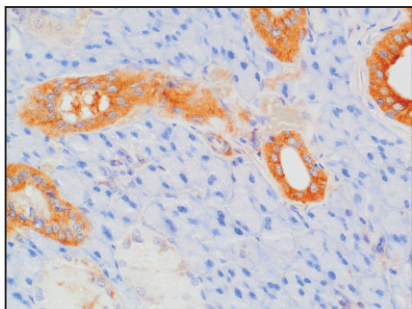
## Anti-Cyclophilin A/PPIA Rabbit pAb



WL00258

For Research Use Only. Not For Use In Diagnostic Procedures

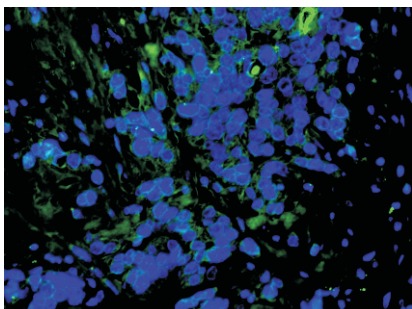
### Product Information



#### Immunohistochemistry-Anti-Cyclophilin A/PPIA pAb

Immunohistochemical analysis of paraffin-embedded rat salivary gland using anti-Cyclophilin A/PPIA Rabbit Antibody at 1:100 dilution.

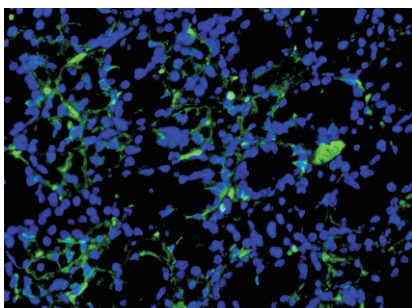
Perform heat mediated antigen retrieval with Tris-EDTA buffer pH 9.0



#### Immunofluorescence-Anti-Cyclophilin A/PPIA pAb

Immunofluorescence analysis of paraffin-embedded human breast cancer using anti-Cyclophilin A/PPIA Rabbit Antibody at 1:100 dilution.

Perform heat mediated antigen retrieval with Tris-EDTA buffer pH 9.0



#### Immunofluorescence-Anti-Cyclophilin A/PPIA pAb

Immunofluorescence analysis of paraffin-embedded mouse salivary gland using anti-Cyclophilin A/PPIA Rabbit Antibody at 1:100 dilution.

Perform heat mediated antigen retrieval with Tris-EDTA buffer pH 9.0