

Anti-CYP27B1 Rabbit pAb



WL05283

For Research Use Only. Not For Use In Diagnostic Procedures

Product Information

Product name	Anti-CYP27B1 Rabbit pAb	
Source	Rabbit	
Species reactivity	Human, Mouse, Rat	
Tested applications	WB	1:1000-1:2000
	IF	1:100-1:500
Cellular localization	Mitochondrion membrane	
Pack size	50/100/200/500/1000μl	
Storage	Store at -20°C. Avoid freeze/thaw cycles.	
Storage buffer	Supplied in 20 mM phosphate (pH 7.5), 150 mM NaCl, 100 μg/ml	
	BSA, 50% glycerol and less than 0.02% sodium azide	

General Information

Background	The cytochrome P450 proteins are monooxygenases that catalyze many reactions involved in drug metabolism and synthesis of cholesterol, steroids and other lipids. The CYP27B1 protein catalyzes the conversion of 25-hydroxyvitamin D3 (25(OH)D) to 1-α,25-dihydroxyvitamin D3 (1,25(OH)2D) and functions in calcium metabolism, normal bone growth, and tissue differentiation.
Immunogen	Polyclonal antibody is produced by immunizing animals with a synthetic peptide of CYP27B1.
Purification	Polyclonal antibody was purified by Protein A affinity chromatography.

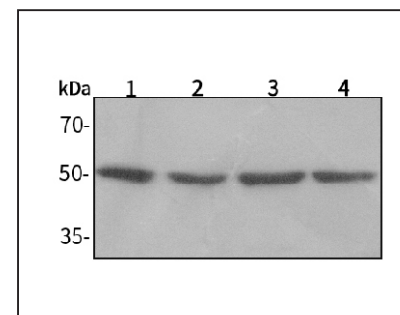
Anti-CYP27B1 Rabbit pAb



WL05283

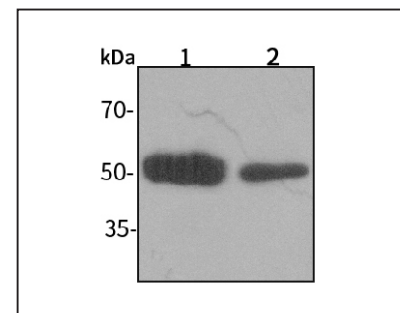
For Research Use Only. Not For Use In Diagnostic Procedures

Product Images



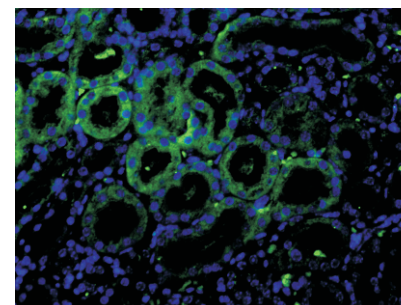
Western blot-Anti-CYP27B1 pAb

Lane 1: Human MCF-7 cell lysate
 Lane 2: Human HEK-293 cell lysate
 Lane 3: Human HUVEC cell lysate
 Lane 4: Human SW480 cell lysate
 All lanes: Anti-CYP27B1 at 1:1000 dilution
 Lysates/proteins at 20-50 μg per lane.
 Predicted band size: 57 kDa
 Observed band size: 57 kDa



Western blot-Anti-CYP27B1 pAb

Lane 1: Mouse heart tissue lysate
 Lane 2: Rat colon tissue lysate
 All lanes: Anti-CYP27B1 at 1:1000 dilution
 Lysates/proteins at 20-50 μg per lane.
 Predicted band size: 57 kDa
 Observed band size: 57 kDa



Immunofluorescence-Anti-CYP27B1 pAb

Immunofluorescence analysis of paraffin-embedded mouse kidney using anti-CYP27B1 Rabbit Antibody at 1:200 dilution.
 Perform heat mediated antigen retrieval with Tris-EDTA buffer pH 9.0

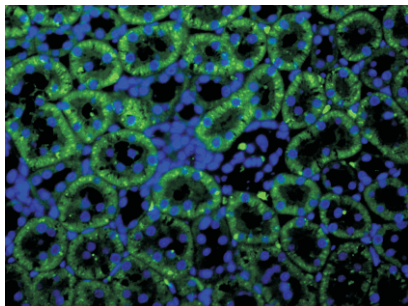
Anti-CYP27B1 Rabbit pAb



WL05283

For Research Use Only. Not For Use In Diagnostic Procedures

Product Information



Immunofluorescence-Anti-CYP27B1 pAb

Immunofluorescence analysis of paraffin-embedded rat kidney using anti-CYP27B1 Rabbit Antibody at 1:200 dilution.

Perform heat mediated antigen retrieval with Tris-EDTA buffer pH 9.0