

## Anti-LEF1 Rabbit pAb



WLA0542

For Research Use Only. Not For Use In Diagnostic Procedures

## Product Information

<b>Product name</b>	Anti-LEF1 Rabbit pAb	
<b>Source</b>	Rabbit	
<b>Species reactivity</b>	Human, Mouse, Rat	
<b>Tested applications</b>	WB	1:1000-1:2000
<b>Pack size</b>	50/100/200/500/1000µl	
<b>Storage</b>	Store at -20°C. <b>Avoid freeze/thaw cycles.</b>	
<b>Storage buffer</b>	Supplied in 20 mM phosphate (pH 7.5), 150 mM NaCl, 100 µg/ml BSA, 50% glycerol and less than 0.02% sodium azide	

## General Information

<b>Background</b>	Lymphatic enhancer binding factor 1 (LEF1) is a member of a family of regulatory proteins that share homology with high mobility group protein 1 and is expressed in pre-B and T cells. LEF1 is involved in hair cell differentiation and hair follicle morphogenesis in Wnt signaling pathway. LEF1, together with CTNNB1 and ep300, activates the transcription of target genes. It can bind to an important functional site of T cell receptor $\alpha$ enhancer, thus producing the maximum enhancer activity. The mutation of this gene was found in somatic sebaceous gland tumors. The gene is also associated with other cancers, including androgen independent prostate cancer.
<b>Immunogen</b>	Polyclonal antibody is produced by immunizing animals with a synthetic peptide of LEF1.
<b>Purification</b>	Polyclonal antibody was purified by Protein A affinity chromatography.

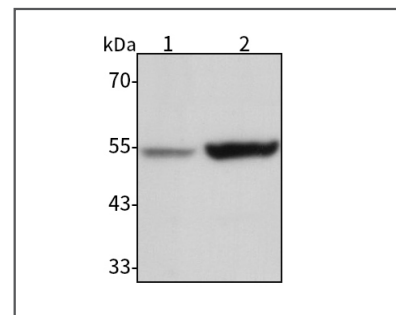
## Anti-LEF1 Rabbit pAb



WLA0542

For Research Use Only. Not For Use In Diagnostic Procedures

## Product Images



Western blot-Anti-LEF1 pAb

Lane 1: Human Raji cell lysate

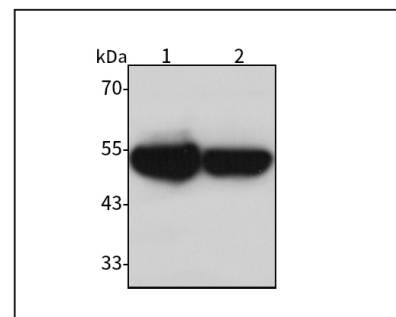
Lane 2: Human LP-1 cell lysate

All lanes: Anti-LEF1 at 1:1000 dilution

Lysates/proteins at 20-50 µg per lane.

Predicted band size: 44 kDa

Observed band size: 55 kDa



Western blot-Anti-LEF1 pAb

Lane 1: Mouse lymph gland tissue lysate

Lane 2: Rat spleen tissue lysate

All lanes: Anti-LEF1 at 1:1000 dilution

Lysates/proteins at 20-50 µg per lane.

Predicted band size: 44 kDa

Observed band size: 55 kDa