

Anti-FAK Rabbit pAb



WLH3926

For Research Use Only. Not For Use In Diagnostic Procedures

Product Information

Product name	Anti-FAK Rabbit pAb		
Source	Rabbit		
Species reactivity	Human, Mouse, Rat		
Tested applications	IHC	1:100-1:400	
	IF	1:100-1:400	
Cellular localization	Cell junction , focal adhesion. Cell membrane.Cytoplasm. Nucleus.		
Pack size	50/100/200/500/1000μl		
Storage	Store at -20°C. <b>Avoid freeze/thaw cycles.</b>		
Storage buffer	Supplied in 20 mM phosphate (pH 7.5), 150 mM NaCl, 100 μg/ml		
	BSA, 50% glycerol and less than 0.02% sodium azide		

General Information

Background	Focal adhesion kinase (FAK) is a widely expressed cytoplasmic protein tyrosine kinase involved in integrin-mediated signal transduction. FAK is concentrated at the basal edge of only those basal keratinocytes that are actively migrating and rapidly proliferating in repairing burn wounds and is activated and localized to the focal adhesions of spreading keratinocytes in culture. Activation of FAK by integrin clustering leads to autophosphorylation at Tyr397, which is a binding site for the Src family kinases PI3K and PLCγ.
Immunogen	Polyclonal antibody is produced by immunizing animals with a synthetic peptide of FAK.
Purification	Polyclonal antibody was purified by immunogen affinity chromatography.

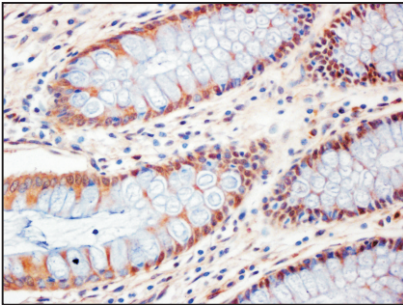
Anti-FAK Rabbit pAb



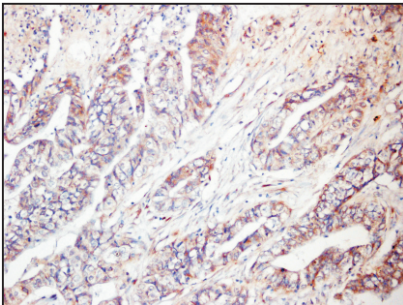
WLH3926

For Research Use Only. Not For Use In Diagnostic Procedures

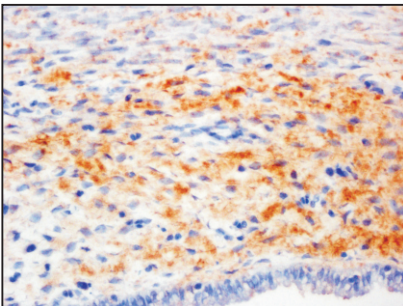
Product Images



**Immunohistochemistry-Anti-FAK pAb**  
Immunohistochemical analysis of paraffin-embedded human colon cancer using anti-FAK Rabbit Antibody at 1:200 dilution.  
Perform heat mediated antigen retrieval with Tris-EDTA buffer pH 9.0



**Immunohistochemistry-Anti-FAK pAb**  
Immunohistochemical analysis of paraffin-embedded human colon cancer using anti-FAK Rabbit Antibody at 1:200 dilution.  
Perform heat mediated antigen retrieval with Tris-EDTA buffer pH 9.0



**Immunohistochemistry-Anti-FAK pAb**  
Immunohistochemical analysis of paraffin-embedded rat uterus using anti-FAK Rabbit Antibody at 1:200 dilution.  
Perform heat mediated antigen retrieval with Tris-EDTA buffer pH 9.0

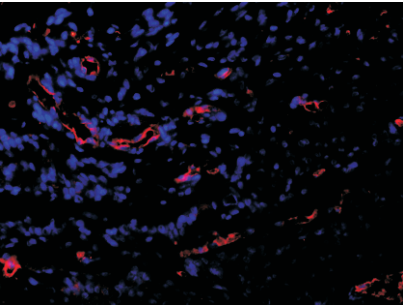
Anti-FAK Rabbit pAb



WLH3926

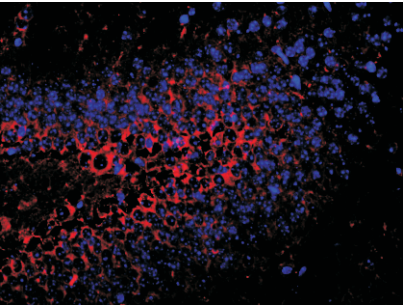
For Research Use Only. Not For Use In Diagnostic Procedures

Product Information



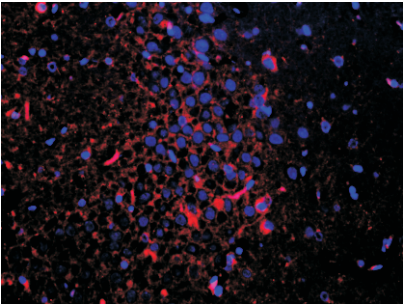
Immunofluorescence-Anti-FAK pAb

Immunofluorescence analysis of paraffin-embedded human brain cancer using anti-FAK Rabbit Antibody at 1:200 dilution.  
Perform heat mediated antigen retrieval with Tris-EDTA buffer pH 9.0



Immunofluorescence-Anti-FAK pAb

Immunofluorescence analysis of paraffin-embedded mouse brain using anti-FAK Rabbit Antibody at 1:200 dilution.  
Perform heat mediated antigen retrieval with Tris-EDTA buffer pH 9.0



Immunofluorescence-Anti-FAK pAb

Immunofluorescence analysis of paraffin-embedded rat brain using anti-FAK Rabbit Antibody at 1:200 dilution.  
Perform heat mediated antigen retrieval with Tris-EDTA buffer pH 9.0

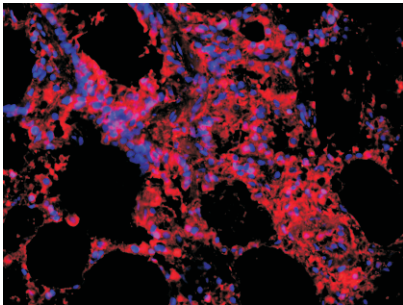
Anti-FAK Rabbit pAb



WLH3926

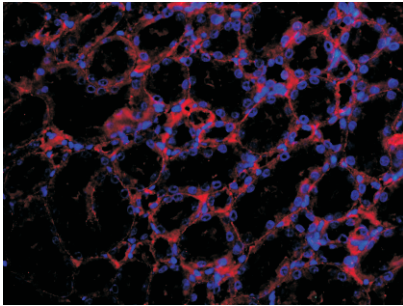
For Research Use Only. Not For Use In Diagnostic Procedures

Product Images



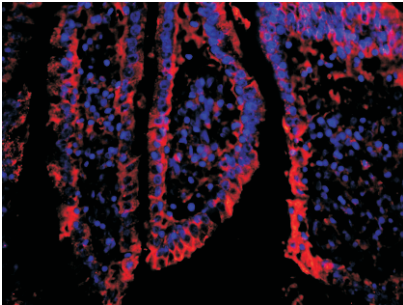
Immunofluorescence-Anti-FAK pAb

Immunofluorescence analysis of paraffin-embedded rat lung using anti-FAK Rabbit Antibody at 1:200 dilution.  
Perform heat mediated antigen retrieval with Tris-EDTA buffer pH 9.0



Immunofluorescence-Anti-FAK pAb

Immunofluorescence analysis of paraffin-embedded rat kidney using anti-FAK Rabbit Antibody at 1:200 dilution.  
Perform heat mediated antigen retrieval with Tris-EDTA buffer pH 9.0



Immunofluorescence-Anti-FAK pAb

Immunofluorescence analysis of paraffin-embedded rat intestine using anti-FAK Rabbit Antibody at 1:200 dilution.  
Perform heat mediated antigen retrieval with Tris-EDTA buffer pH 9.0