

## Anti-EGFR Rabbit pAb



WL0682a

For Research Use Only. Not For Use In Diagnostic Procedures

## Product Information

<b>Product name</b>	Anti-EGFR Rabbit pAb	
<b>Source</b>	Rabbit	
<b>Species reactivity</b>	Human, Mouse, Rat	
<b>Tested applications</b>	WB	1:500-1:1000
	IHC	1:50-1:500
<b>Cellular localization</b>	Secreted and Cell membrane. Endoplasmic reticulum membrane.	
	Golgi apparatus membrane. Nucleus membrane. Endosome.	
	Endosome membrane. Nucleus.	
<b>Pack size</b>	50/100/200/500/1000μl	
<b>Storage</b>	Store at -20°C. <b>Avoid freeze/thaw cycles.</b>	
<b>Storage buffer</b>	Supplied in 20 mM phosphate (pH 7.5), 150 mM NaCl, 100 μg/ml	
<b>General Information</b>	BSA, 50% glycerol and less than 0.02% sodium azide	

## Background

The epidermal growth factor (EGF) receptor is a transmembrane tyrosine kinase that belongs to the HER/ErbB protein family. Ligand binding results in receptor dimerization, autophosphorylation, activation of downstream signaling, internalization, and lysosomal degradation. Exons in the EGFR gene product are frequently either deleted or duplicated to produce deletion mutants (DM) or tandem duplication mutants (TDM), respectively, which are detected at various molecular weights. EGFR is involved in organ morphogenesis and maintenance and repair of tissues, but upregulation of EGFR is associated with tumor progression.

## Immunogen

Polyclonal antibody is produced by immunizing animals with a synthetic peptide of EGFR.

## Purification

Polyclonal antibody was purified by immunogen affinity chromatography.

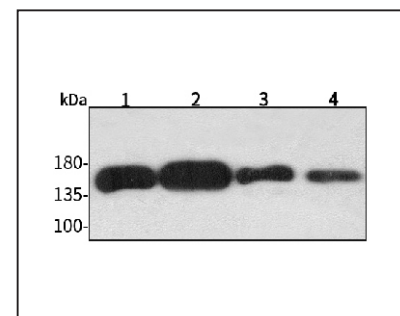
## Anti-EGFR Rabbit pAb



WL0682a

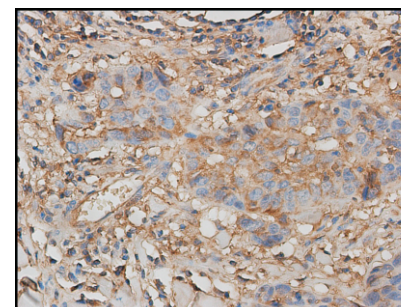
For Research Use Only. Not For Use In Diagnostic Procedures

## Product Images



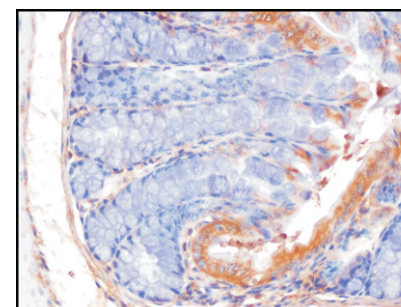
## Western blot-Anti-EGFR pAb

Lane 1: Human HepG2 cell lysate  
 Lane 2: Human Hela cell lysate  
 Lane 3: Human BGC-823 cell lysate  
 Lane 4: Human MGC-803 cell lysate  
 All lanes: Anti-EGFR at 1:1000 dilution  
 Lysates/proteins at 20-50 μg per lane.  
 Predicted band size: 134 kDa  
 Observed band size: 175 kDa



## Immunohistochemistry-Anti-EGFR pAb

Immunohistochemical analysis of paraffin-embedded human colon cancer using anti-EGFR Rabbit Antibody at 1:100 dilution.  
 Perform heat mediated antigen retrieval with Tris-EDTA buffer pH 9.0



## Immunohistochemistry-Anti-EGFR pAb

Immunohistochemical analysis of paraffin-embedded mouse colon using anti-EGFR Rabbit Antibody at 1:100 dilution.  
 Perform heat mediated antigen retrieval with Tris-EDTA buffer pH 9.0