

Anti-IL4 Rabbit pAb



WL05916

For Research Use Only. Not For Use In Diagnostic Procedures

Product Information

Product name	Anti-IL4 Rabbit pAb	
Source	Rabbit	
Species reactivity	Human, Mouse, Rat	
Tested applications	WB	1:1000-1:2000
	IHC	1:500
	IF	1:500
Cellular localization	Secreted	
Pack size	50/100/200/500/1000μl	
Storage	Store at -20°C. Avoid freeze/thaw cycles.	
Storage buffer	Supplied in 20 mM phosphate (pH 7.5), 150 mM NaCl, 100 μg/ml BSA, 50% glycerol and less than 0.02% sodium azide	

General Information

Background	This cytokine is a ligand for interleukin 4 receptor. The interleukin 4 receptor also binds to IL13, which may contribute to many overlapping functions of this cytokine and IL13. STAT6, a signal transducer and activator of transcription, has been shown to play a central role in mediating the immune regulatory signal of this cytokine.
Immunogen	Polyclonal antibody is produced by immunizing animals with a synthetic peptide of IL4.
Purification	Polyclonal antibody was purified by Protein A affinity chromatography.

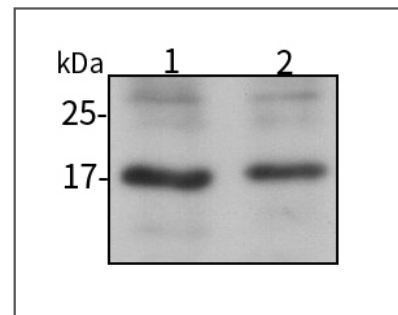
Anti-IL4 Rabbit pAb



WL05916

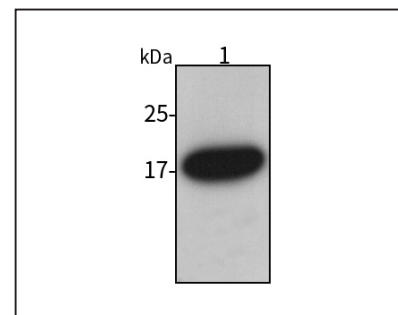
For Research Use Only. Not For Use In Diagnostic Procedures

Product Images



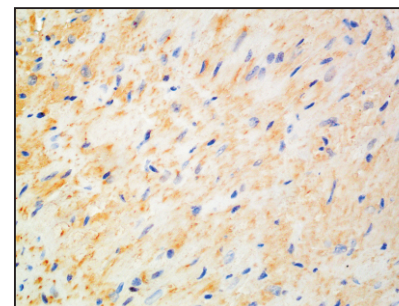
Western blot-Anti-IL4 pAb

Lane 1: Human Hela cell lysate
 Lane 2: Human HEK-293 cell lysate
 All lanes: Anti-IL4 at 1:1000 dilution
 Lysates/proteins at 20-50 μg per lane.
 Predicted band size: 17 kDa
 Observed band size: 17 kDa



Western blot-Anti-IL4 pAb

Lane 1: Mouse lung tissue lysate
 All lanes: Anti-IL4 at 1:1000 dilution
 Lysates/proteins at 20-50 μg per lane.
 Predicted band size: 17 kDa
 Observed band size: 17 kDa



Immunohistochemistry-Anti-IL4 pAb

Immunohistochemical analysis of paraffin-embedded mouse heart using anti-FUCA1 Rabbit Antibody at 1:500 dilution.
 Perform heat mediated antigen retrieval with Tris-EDTA buffer pH 9.0

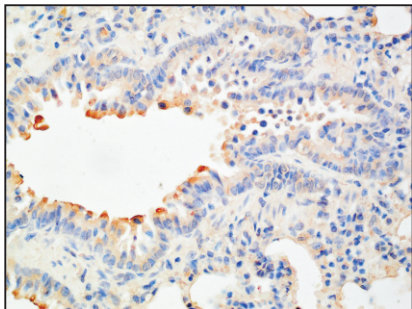
Anti-IL4 Rabbit pAb



WL05916

For Research Use Only. Not For Use In Diagnostic Procedures

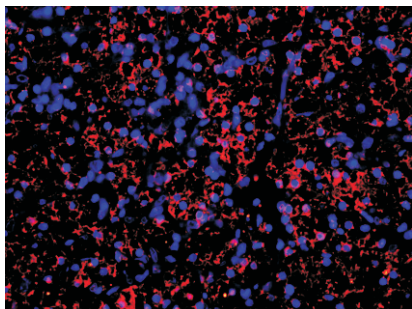
Product Information



Immunohistochemistry-Anti-IL4 pAb

Immunohistochemical analysis of paraffin-embedded rat lung using anti-IL4 Rabbit Antibody at 1:500 dilution.

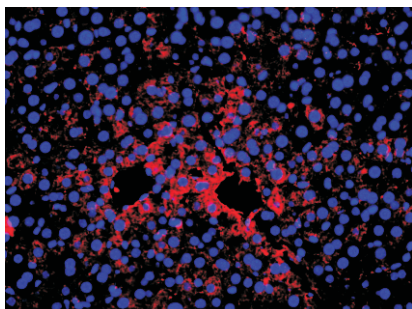
Perform heat mediated antigen retrieval with Tris-EDTA buffer pH 9.0



Immunofluorescence-Anti-IL4 pAb

Immunofluorescence analysis of paraffin-embedded human kidney clear cell carcinoma using anti-IL4 Rabbit Antibody at 1:500 dilution.

Perform heat mediated antigen retrieval with Tris-EDTA buffer pH 9.0



Immunofluorescence-Anti-IL4 pAb

Immunofluorescence analysis of paraffin-embedded mouse liver using anti-IL4 Rabbit Antibody at 1:500 dilution.

Perform heat mediated antigen retrieval with Tris-EDTA buffer pH 9.0