

Anti- GSTT1 Rabbit pAb



WL04390

For Research Use Only. Not For Use In Diagnostic Procedures

Product Information

Product name	Anti- GSTT1 Rabbit pAb	
Source	Rabbit	
Species reactivity	Human, Mouse, Rat, Rabbit	
Tested applications	WB	1:500-1:1000
	IHC, IF	1:100-1:200
Cellular localization	Cytoplasm.	
Pack size	50/100/200/500/1000μl	
Storage	Store at -20°C. Avoid freeze/thaw cycles.	
Storage buffer	Supplied in 20 mM phosphate (pH 7.5), 150 mM NaCl, 100 μg/ml	
	BSA, 50% glycerol and less than 0.02% sodium azide	

General Information

Background	GSTT1 belongs to a superfamily of proteins which catalyze the conjugation of reduced glutathione to a variety of electrophilic and hydrophobic compounds. GSTs can be divided into five main classes: alpha, mu, pi, theta, and zeta (which includes GSTT1 and GSTT2). The GSTT1 gene is haplotype-specific and is absent from 38% of the population. GSTT1-null genotypes are seen as having a higher risk of developing leukoplakia.
Immunogen	Polyclonal antibody is produced by immunizing animals with a synthetic peptide of GSTT1.
Purification	Polyclonal antibody was purified by immunogen affinity chromatography.

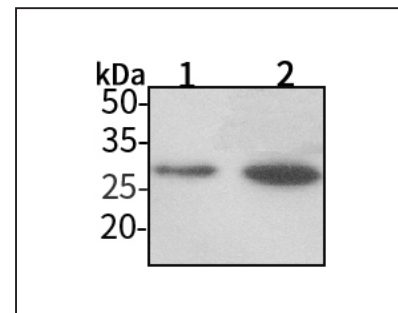
Anti- GSTT1 Rabbit pAb



WL04390

For Research Use Only. Not For Use In Diagnostic Procedures

Product Images



Western blot-Anti-GSTT1 pAb

Lane 1: Human HEK-293 cell lysate

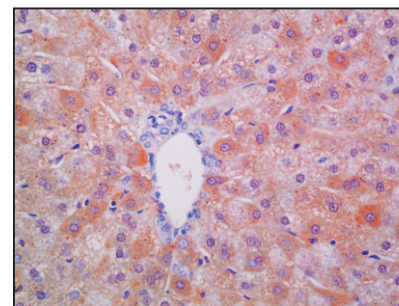
Lane 2: Human A549 cell lysate

All lanes: Anti-GSTT1 at 1:1000 dilution

Lysates/proteins at 20-50 μg per lane.

Predicted band size: 27 kDa

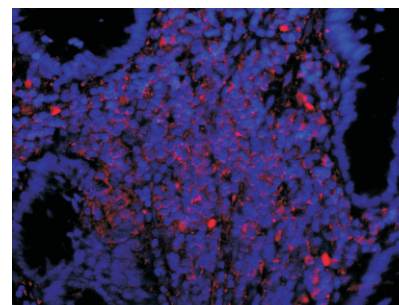
Observed band size: 27 kDa



Immunohistochemistry-Anti-GSTT1 pAb

Immunohistochemical analysis of paraffin-embedded rabbit liver using anti-GSTT1 Rabbit Antibody at 1:100 dilution.

Perform heat mediated antigen retrieval with Tris-EDTA buffer pH 9.0



Immunofluorescence-Anti-GSTT1 pAb

Immunofluorescence analysis of paraffin-embedded human colon cancer using anti-GSTT1 Rabbit Antibody at 1:100 dilution.

Perform heat mediated antigen retrieval with Tris-EDTA buffer pH 9.0

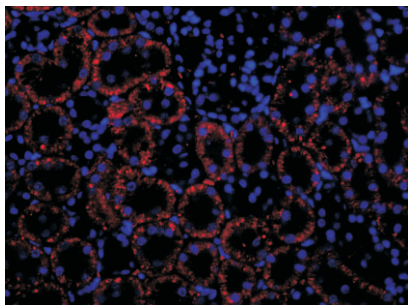
Anti-GSTT1 Rabbit pAb



WL04390

For Research Use Only. Not For Use In Diagnostic Procedures

Product Information



Immunofluorescence-Anti-GSTT1 pAb

Immunofluorescence analysis of paraffin-embedded rat kidney using anti-GSTT1 Rabbit Antibody at 1:100 dilution.

Perform heat mediated antigen retrieval with Tris-EDTA buffer pH 9.0