

## Anti-GLI2 Rabbit pAb



WL03996

For Research Use Only. Not For Use In Diagnostic Procedures

## Product Information

<b>Product name</b>	Anti-GLI2 Rabbit pAb	
<b>Source</b>	Rabbit	
<b>Species reactivity</b>	Human, Mouse, Rat	
<b>Tested applications</b>	WB	1:1000-1:2000
	IHC	1:100-1:400
<b>Cellular localization</b>	Nucleus, Cell projection, Cilium, Cytoplasm.	
<b>Pack size</b>	50/100/200/500/1000μl	
<b>Storage</b>	Store at -20°C. <b>Avoid freeze/thaw cycles.</b>	
<b>Storage buffer</b>	Supplied in 20 mM phosphate (pH 7.5), 150 mM NaCl, 100 μg/ml	
	BSA, 50% glycerol and less than 0.02% sodium azide	

## General Information

<b>Background</b>	Zinc finger protein GLI2 also known as GLI family zinc finger 2 is a protein that in humans is encoded by the GLI2 gene. The protein encoded by this gene is a transcription factor. It is also thought to play a role during embryogenesis. There are four isoforms: Gli2 alpha, beta, gamma and delta. Gli2 is expressed in the interfollicular epidermis and the outer root sheath of hair follicles in normal human skin. This is significant as Shh regulates hair follicle growth and morphogenesis. When inappropriately activated causes hair follicle derived tumors, the most clinically significant being the BCC.
<b>Immunogen</b>	Polyclonal antibody is produced by immunizing animals with a synthetic peptide of GLI2.
<b>Purification</b>	Polyclonal antibody was purified by Protein A affinity chromatography.

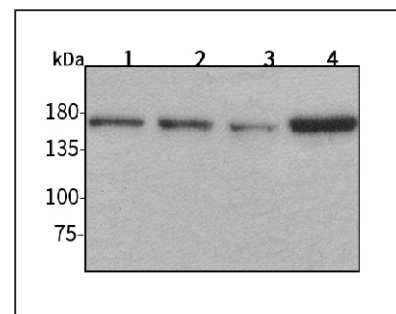
## Anti-GLI2 Rabbit pAb



WL03996

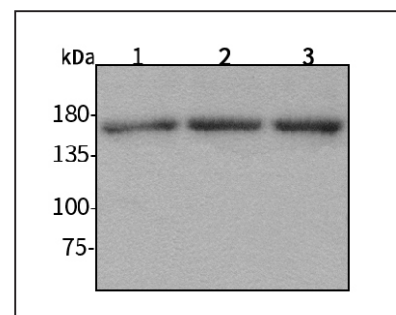
For Research Use Only. Not For Use In Diagnostic Procedures

## Product Images



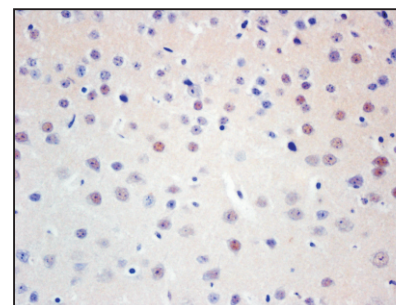
Western blot-Anti-GLI2 pAb

Lane 1: Human Hela cell lysate  
 Lane 2: Human MCF-7 cell lysate  
 Lane 3: Human HEK-293 cell lysate  
 Lane 4: Human SW480 cell lysate  
 All lanes: Anti-GLI2 at 1:1000 dilution  
 Lysates/proteins at 20-50 μg per lane.  
 Predicted band size: 168 kDa  
 Observed band size: 167 kDa



Western blot-Anti-GLI2 pAb

Lane 1: Mouse heart tissue lysate  
 Lane 2: Rat lung tissue lysate  
 Lane 3: Rat stomach tissue lysate  
 All lanes: Anti-GLI2 at 1:1000 dilution  
 Lysates/proteins at 20-50 μg per lane.  
 Predicted band size: 168 kDa  
 Observed band size: 167 kDa



Immunohistochemistry-Anti-GLI2 pAb

Immunohistochemical analysis of paraffin-embedded mouse brain using anti-GLI2-β Rabbit Antibody at 1:200 dilution.  
 Perform heat mediated antigen retrieval with Tris-EDTA buffer pH 9.0

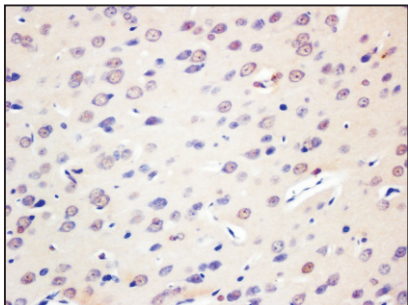
## Anti-GLI2 Rabbit pAb



WL03996

For Research Use Only. Not For Use In Diagnostic Procedures

### Product Information



#### Immunohistochemistry-Anti-GLI2 pAb

Immunohistochemical analysis of paraffin-embedded rat brain using anti-GLI2- $\beta$  Rabbit Antibody at 1:200 dilution.

Perform heat mediated antigen retrieval with Tris-EDTA buffer pH 9.0