

Anti-FOXO1A/FKHR Rabbit pAb



WL02491

For Research Use Only. Not For Use In Diagnostic Procedures

Product Information

Product name	Anti-FOXO1A/FKHR Rabbit pAb	
Source	Rabbit	
Species reactivity	Human, Mouse, Rat	
Tested applications	WB	1:500-1:1000
	IHC	1:100-1:500
	IF	1:300
Cellular localization	Cytoplasm. Nucleus	
Pack size	50/100/200/500/1000μl	
Storage	Store at -20°C. Avoid freeze/thaw cycles.	
Storage buffer	Supplied in 20 mM phosphate (pH 7.5), 150 mM NaCl, 100 μg/ml	
	BSA, 50% glycerol and less than 0.02% sodium azide	

General Information

Background	FOXO1A belongs to the forkhead family of transcription factors which are characterized by a distinct forkhead domain. FKHR (for forkhead in rhabdomyosarcoma) and FKHL1 are members of the forkhead family of transcription factors. Transcriptional activation of FKHR proteins is regulated by the serine/threonine kinase Akt1, which phosphorylates FKHL1 and results in FKHL1 associating with 14-3-3 proteins and being retained in the cytoplasm. FKHR, also designated forkhead box protein O1A (FOXO1), is a ubiquitously expressed protein that shuttles between the cytoplasm and nucleus.
Immunogen	Polyclonal antibody is produced by immunizing animals with a synthetic peptide of FOXO1A/FKHR.
Purification	Polyclonal antibody was purified by immunogen affinity chromatography.

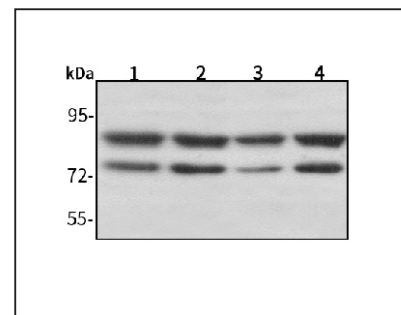
Anti-FOXO1A/FKHR Rabbit pAb



WL02491

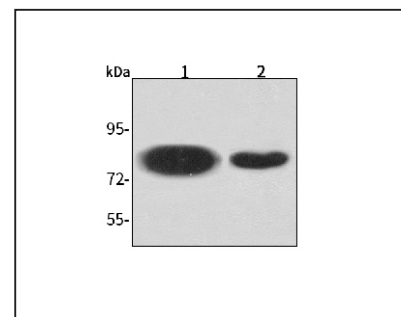
For Research Use Only. Not For Use In Diagnostic Procedures

Product Images



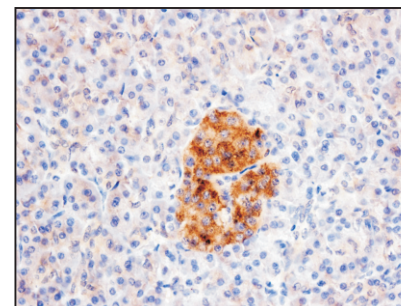
Western blot-Anti-FOXO1A/FKHR pAb

Lane 1: Human HepG2 cell lysate
 Lane 2: Human Hela cell lysate
 Lane 3: Human BGC-823 cell lysate
 Lane 4: Human MGC-803 cell lysate
 All lanes: Anti-FOXO1A/FKHR at 1:1000 dilution
 Lysates/proteins at 20-50 μg per lane.
 Predicted band size: 70 kDa
 Observed band size: 78-82 kDa



Western blot-Anti-FOXO1A/FKHR pAb

Lane 1: Mouse lung tissue lysate
 Lane 2: Rat stomach tissue lysate
 All lanes: Anti-FOXO1A/FKHR at 1:1000 dilution
 Lysates/proteins at 20-50 μg per lane.
 Predicted band size: 70 kDa
 Observed band size: 78-82 kDa



Immunohistochemistry-Anti-FOXO1A/FKHR pAb

Immunohistochemical analysis of paraffin-embedded human pancreatic cancer using anti-FOXO1A/FKHR Rabbit Antibody at 1:100 dilution. Perform heat mediated antigen retrieval with Tris-EDTA buffer pH 9.0

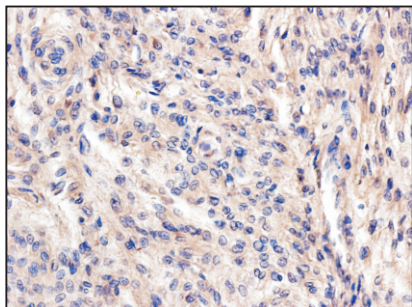
Anti-FOXO1A/FKHR Rabbit pAb



WL02491

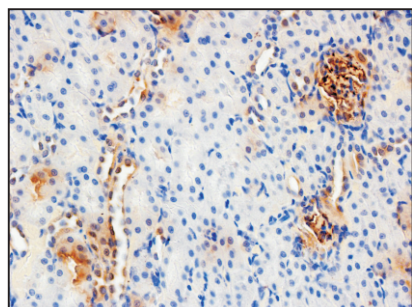
For Research Use Only. Not For Use In Diagnostic Procedures

Product Information



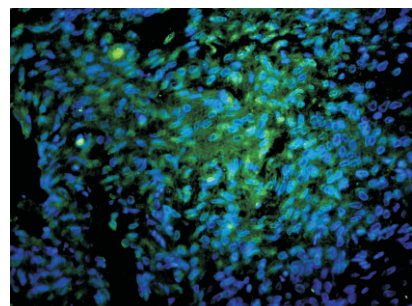
Immunohistochemistry-Anti-FOXO1A/FKHR pAb

Immunohistochemical analysis of paraffin-embedded human brain using anti-FOXO1A/FKHR Rabbit Antibody at 1:300 dilution.
Perform heat mediated antigen retrieval with Tris-EDTA buffer pH 9.0



Immunohistochemistry-Anti-FOXO1A/FKHR pAb

Immunohistochemical analysis of paraffin-embedded rat kidney (LPS treated) using anti-FOXO1A/FKHR Rabbit Antibody at 1:100 dilution.
Perform heat mediated antigen retrieval with Tris-EDTA buffer pH 9.0



Immunofluorescence-Anti-FOXO1A/FKHR pAb

Immunofluorescence analysis of paraffin-embedded human brain using anti-FOXO1A/FKHR Rabbit Antibody at 1:300 dilution.
Perform heat mediated antigen retrieval with Tris-EDTA buffer pH 9.0

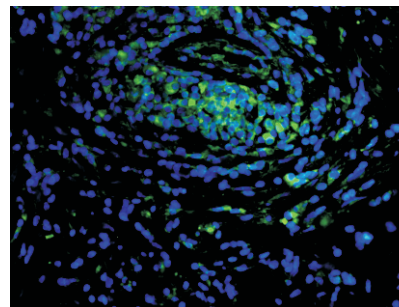
Anti-FOXO1A/FKHR Rabbit pAb



WL02491

For Research Use Only. Not For Use In Diagnostic Procedures

Product Images



Immunofluorescence-Anti-FOXO1A/FKHR pAb

Immunofluorescence analysis of paraffin-embedded human colon cancer using anti-FOXO1A/FKHR Rabbit Antibody at 1:300 dilution.
Perform heat mediated antigen retrieval with Tris-EDTA buffer pH 9.0