

Anti-GP130 Rabbit pAb



WL02737

For Research Use Only. Not For Use In Diagnostic Procedures

Product Information

Product name	Anti-GP130 Rabbit pAb		
Source	Rabbit		
Species reactivity	Human,, Mouse, Rat		
Tested applications	WB	1:1000-1:2000	
	IF	1:500	
Cellular localization	Cell membrane, Secreted.		
Pack size	50/100/200/500/1000μl		
Storage	Store at -20°C. Avoid freeze/thaw cycles.		
Storage buffer	Supplied in 20 mM phosphate (pH 7.5), 150 mM NaCl, 100 μg/ml		
	BSA, 50% glycerol and less than 0.02% sodium azide		

General Information

Background	Gp130 is a signal-transducing subunit shared by the receptors for the IL-6 family of cytokines. There are many proteins which associate with gp130, such as CT-1, LIF, CNTF, OSM, and IL-11. GP130 has no intrinsic tyrosine kinase activity. Instead, it is phosphorylated on tyrosine residues after complexing with other proteins. The phosphorylation leads to association with JAK/Tyk tyrosine kinases and STAT protein transcription factors. In particular, STAT-3 is activated which leads to the activation of many downstream genes. Other pathways activated include RAS and MAPK signaling.
Immunogen	Polyclonal antibody is produced by immunizing animals with a synthetic peptide of GP130.
Purification	Polyclonal antibody was purified by protein A affinity chromatography.

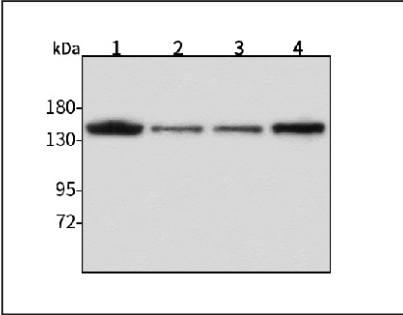
Anti-GP130 Rabbit pAb



WL02737

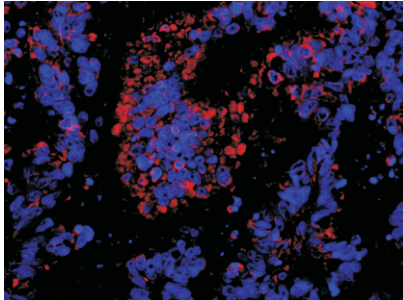
For Research Use Only. Not For Use In Diagnostic Procedures

Product Images



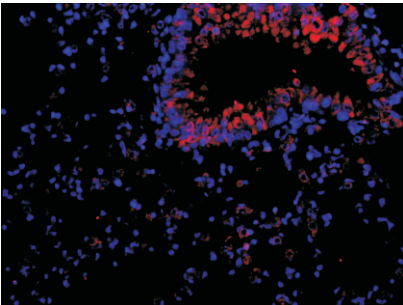
Western blot-Anti-GP130 pAb

Lane 1: Human BGC-823 cell lysate
Lane 2: Human SGC-7901 cell lysate
Lane 3: Human MCF-7 cell lysate
Lane 4: Human HEK-293 cell lysate
All lanes: Anti-GP130 at 1:1000 dilution
Lysates/proteins at 20-50 μg per lane.
Predicted band size: 104 kDa
Observed band size: 130 kDa



Immunofluorescence-Anti-GP130 pAb

Immunofluorescence analysis of paraffin-embedded human rectal cancer using anti-GP130 Rabbit Antibody at 1:500 dilution.
Perform heat mediated antigen retrieval with Tris-EDTA buffer pH 9.0



Immunofluorescence-Anti-GP130 pAb

Immunofluorescence analysis of paraffin-embedded mouse lung using anti-GP130 Rabbit Antibody at 1:500 dilution.
Perform heat mediated antigen retrieval with Tris-EDTA buffer pH 9.0

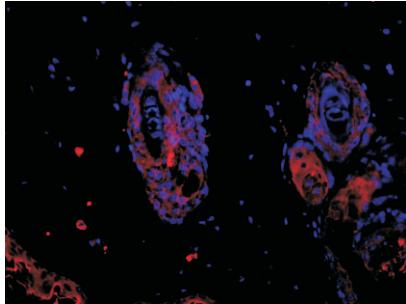
Anti-GP130 Rabbit pAb



WL02737

For Research Use Only. Not For Use In Diagnostic Procedures

Product Information



Immunofluorescence-Anti-GP130 pAb

Immunofluorescence analysis of paraffin-embedded rat skin using anti-GP130 Rabbit Antibody at 1:500 dilution.

Perform heat mediated antigen retrieval with Tris-EDTA buffer pH 9.0