

Anti-DTX2 Rabbit pAb



WLH4505

For Research Use Only. Not For Use In Diagnostic Procedures

Product Information

Product name	Anti-DTX2 Rabbit pAb		
Source	Rabbit		
Species reactivity	Human, Mouse, Rat		
Tested applications	WB	1:1000-1:2000	
	IHC	1:100-1:400	
	IF	1:100-1:400	
Cellular localization	Cytoplasm. Nucleus		
Pack size	50/100/200/500/1000μl		
Storage	Store at -20°C. Avoid freeze/thaw cycles.		
Storage buffer	Supplied in 20 mM phosphate (pH 7.5), 150 mM NaCl, 100 μg/ml		
	BSA, 50% glycerol and less than 0.02% sodium azide		

General Information

Background	DTX2 belongs to the Deltex family. It contains one RING-type zinc finger and two WWE domains. DTX2 is a regulator of Notch signaling, a signaling pathway involved in cell-cell communications that regulates a broad spectrum of cell-fate determinations. It probably acts both as a positive and negative regulator of Notch, depending on the developmental and cell context; mediates the antineural activity of Notch, possibly by inhibiting the transcriptional activation mediated by MATCH1.
Immunogen	Polyclonal antibody is produced by immunizing animals with a synthetic peptide of DTX2.
Purification	Polyclonal antibody was purified by Protein A affinity chromatography.

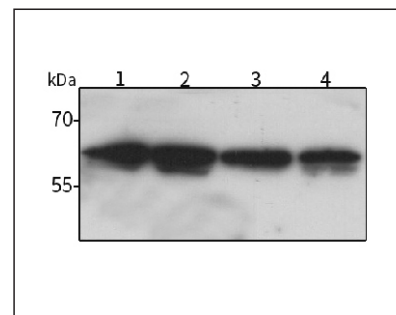
Anti-DTX2 Rabbit pAb



WLH4505

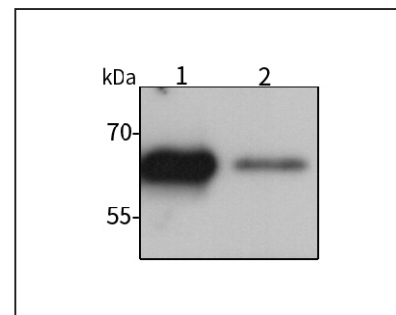
For Research Use Only. Not For Use In Diagnostic Procedures

Product Images



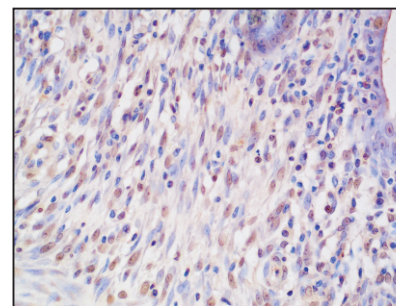
Western blot-Anti-DTX2 pAb

Lane 1: Human Hela cell lysate
 Lane 2: Human HEK-293 cell lysate
 Lane 3: Human HCT116 cell lysate
 Lane 4: Human MDA-MB-231 cell lysate
 All lanes: Anti-DTX2 at 1:1000 dilution
 Lysates/proteins at 20-50 μg per lane.
 Predicted band size: 67 kDa
 Observed band size: 67 kDa



Western blot-Anti-DTX2 pAb

Lane 1: Mouse colon tissue lysate
 Lane 2: Rat stomach tissue lysate
 All lanes: Anti-DTX2 at 1:1000 dilution
 Lysates/proteins at 20-50 μg per lane.
 Predicted band size: 67 kDa
 Observed band size: 67 kDa



Immunohistochemistry-Anti-DTX2 pAb

Immunohistochemical analysis of paraffin-embedded rat uterus using anti-DTX2 Rabbit Antibody at 1:200 dilution.
 Perform heat mediated antigen retrieval with Tris-EDTA buffer pH 9.0

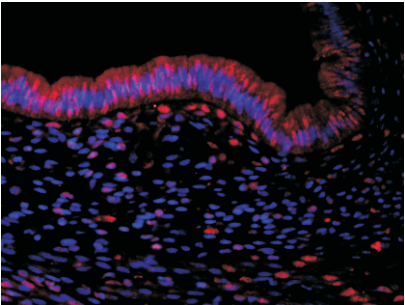
Anti-DTX2 Rabbit pAb



For Research Use Only. Not For Use In Diagnostic Procedures

WLH4505

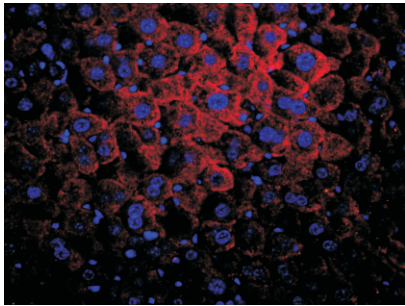
Product Information



Immunofluorescence-Anti-DTX2 pAb

Immunofluorescence analysis of paraffin-embedded mouse uterus anti-DTX2 Rabbit Antibody at 1:200 dilution.

Perform heat mediated antigen retrieval with Tris-EDTA buffer pH 9.0



Immunofluorescence-Anti-DTX2 pAb

Immunofluorescence analysis of paraffin-embedded mouse liver using anti-DTX2 Rabbit Antibody at 1:200 dilution.

Perform heat mediated antigen retrieval with Tris-EDTA buffer pH 9.0