

## Anti-E-Cadherin Rabbit pAb



WL00941

For Research Use Only. Not For Use In Diagnostic Procedures

## Product Information

<b>Product name</b>	Anti-E-Cadherin Rabbit pAb	
<b>Source</b>	Rabbit	
<b>Species reactivity</b>	Human, Mouse, Rat	
<b>Tested applications</b>	WB	1:500-1:1000
	IHC	1:100-1:300
	IF	1:200
<b>Cellular localization</b>	Cell junction. Cell membrane. Cytoplasm. Endosome. Golgi apparatus	
<b>Pack size</b>	50/100/200/500/1000μl	
<b>Storage</b>	Store at -20°C. <b>Avoid freeze/thaw cycles.</b>	
<b>Storage buffer</b>	Supplied in 20 mM phosphate (pH 7.5), 150 mM NaCl, 100 μg/ml	
	BSA, 50% glycerol and less than 0.02% sodium azide	

## General Information

<b>Background</b>	E-Cadherin is a classical cadherin from the cadherin superfamily. The protein is a calcium dependent cell-cell adhesion glycoprotein comprised of five extracellular cadherin repeats, a transmembrane region and a highly conserved cytoplasmic tail. Mutations in this gene are correlated with gastric, breast, colorectal, thyroid and ovarian cancer. Loss of function is thought to contribute to progression in cancer by increasing proliferation, invasion, and/or metastasis. The ectodomain of this protein mediates bacterial adhesion to mammalian cells and the cytoplasmic domain is required for internalization.
<b>Immunogen</b>	Polyclonal antibody is produced by immunizing animals with a synthetic peptide of E-Cadherin.
<b>Purification</b>	Polyclonal antibody was purified by immunogen affinity chromatography.

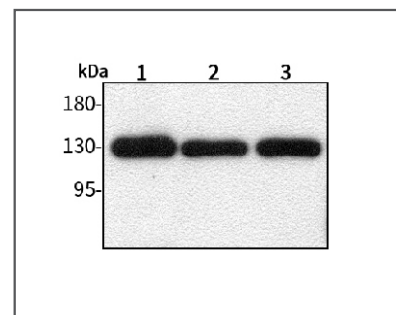
## Anti-E-Cadherin Rabbit pAb



WL00941

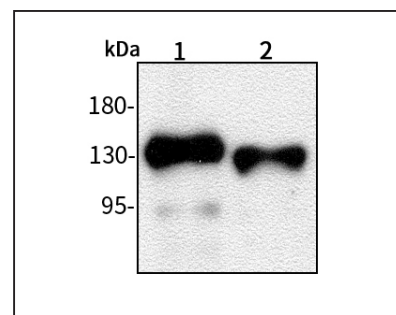
For Research Use Only. Not For Use In Diagnostic Procedures

## Product Images



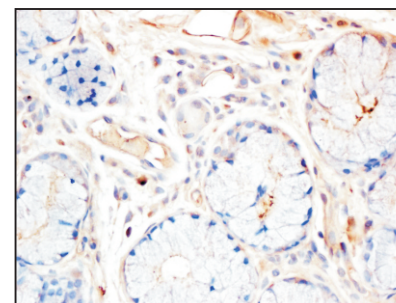
Western blot-Anti-E-Cadherin pAb

Lane 1: Human BGC-823 cell lysate  
 Lane 2: Human MGC-803 cell lysate  
 Lane 3: Human SGC-7901 cell lysate  
 All lanes: Anti-E-Cadherin at 1:1000 dilution  
 Lysates/proteins at 20-50 μg per lane.  
 Predicted band size: 97 kDa  
 Observed band size: 135 kDa



Western blot-Anti-E-Cadherin pAb

Lane 1: Rat heart tissue lysate  
 Lane 2: Rat brain tissue lysate  
 All lanes: Anti-E-Cadherin at 1:1000 dilution  
 Lysates/proteins at 20-50 μg per lane.  
 Predicted band size: 97 kDa  
 Observed band size: 135 kDa



Immunohistochemistry-Anti-E-Cadherin pAb

Immunohistochemical analysis of paraffin-embedded human labial gland using anti-E-Cadherin Rabbit Antibody at 1:200 dilution.  
 Perform heat mediated antigen retrieval with Tris-EDTA buffer pH 9.0

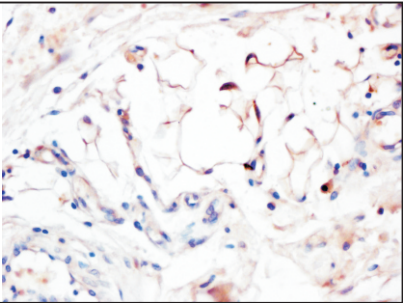
Anti-E-Cadherin Rabbit pAb



WL00941

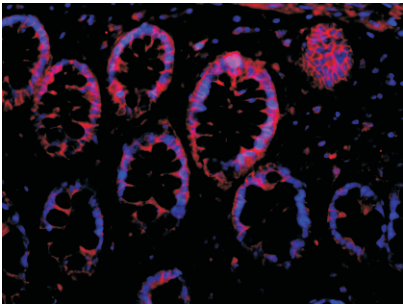
For Research Use Only. Not For Use In Diagnostic Procedures

Product Information



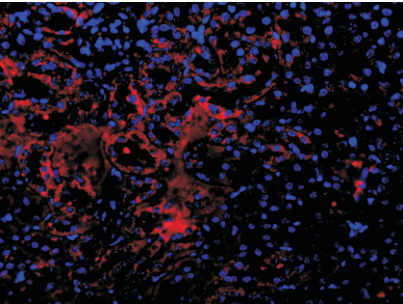
Immunohistochemistry-Anti-E-Cadherin pAb

Immunohistochemical analysis of paraffin-embedded human bile duct cancer using anti-E-Cadherin Rabbit Antibody at 1:200 dilution.  
Perform heat mediated antigen retrieval with Tris-EDTA buffer pH 9.0



Immunofluorescence-Anti-E-Cadherin pAb

Immunofluorescence analysis of paraffin-embedded human colon cancer using anti-E-Cadherin Rabbit Antibody at 1:200 dilution.  
Perform heat mediated antigen retrieval with Tris-EDTA buffer pH 9.0



Immunofluorescence-Anti-E-Cadherin pAb

Immunofluorescence analysis of paraffin-embedded mouse kidney using anti-E-Cadherin Rabbit Antibody at 1:200 dilution.  
Perform heat mediated antigen retrieval with Tris-EDTA buffer pH 9.0

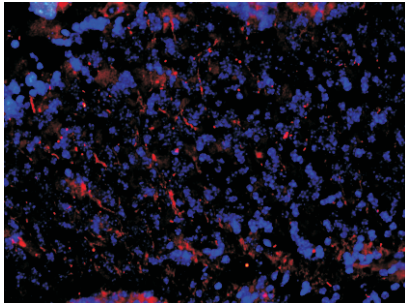
Anti-E-Cadherin Rabbit pAb



WL00941

For Research Use Only. Not For Use In Diagnostic Procedures

Product Images



Immunofluorescence-Anti-E-Cadherin pAb

Immunofluorescence analysis of paraffin-embedded mouse cerebellum using anti-E-Cadherin Rabbit Antibody at 1:200 dilution.  
Perform heat mediated antigen retrieval with Tris-EDTA buffer pH 9.0