

Anti-Integrin β1 Rabbit pAb



WL01615

For Research Use Only. Not For Use In Diagnostic Procedures

Product Information

Product name	Anti-Integrin β1 Rabbit pAb	
Source	Rabbit	
Species reactivity	Human, Mouse, Rat	
Tested applications	WB	1:1000-1:2000
	IHC	1:500
Cellular localization	Cell junction, Cell membrane, Cell projection, Endosome.	
Pack size	50/100/200/500/1000μl	
Storage	Store at -20°C. Avoid freeze/thaw cycles.	
Storage buffer	Supplied in 20 mM phosphate (pH 7.5), 150 mM NaCl, 100 μg/ml	
	BSA, 50% glycerol and less than 0.02% sodium azide	

General Information

Background	Integrins are heterodimeric proteins made up of alpha and beta subunits. The 16 a and 8 b subunits heterodimerize to produce more than 20 different receptors. Most integrin receptors bind ligands that are components of the extracellular matrix, including Fibronectin, collagen and vitronectin. Integrin family members are membrane receptors involved in cell adhesion and recognition in a variety of processes including embryogenesis, hemostasis, tissue repair, immune response and metastatic diffusion of tumor cells.
Immunogen	Polyclonal antibody is produced by immunizing animals with a synthetic peptide of Integrin β1.
Purification	Polyclonal antibody was purified by Protein A affinity chromatography.

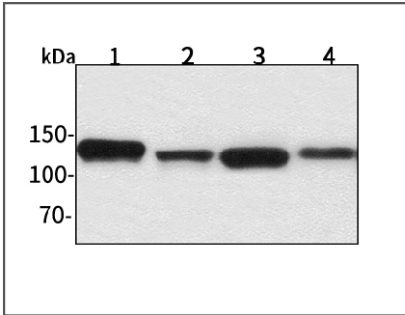
Anti-Integrin β1 Rabbit pAb



WL01615

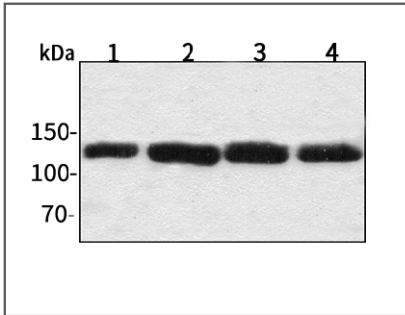
For Research Use Only. Not For Use In Diagnostic Procedures

Product Images



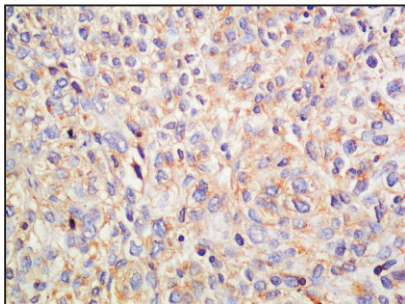
Western blot-Anti-Integrin β1 pAb

Lane 1: Human Hela cell lysate
Lane 2: Human BGC-823 cell lysate
Lane 3: Human MGC-803 cell lysate
Lane 4: Human SGC-7901 cell lysate
All lanes: Anti-Integrin β1 at 1:1000 dilution
Lysates/proteins at 20-50 μg per lane.
Predicted band size: 88 kDa
Observed band size: 130 kDa



Western blot-Anti-Integrin β1 pAb

Lane 1: Mouse heart tissue lysate
Lane 2: Mouse kidney tissue lysate
Lane 3: Rat brain tissue lysate
Lane 4: Rat testicle tissue lysate
All lanes: Anti-Integrin β1 at 1:1000 dilution
Lysates/proteins at 20-50 μg per lane.
Predicted band size: 88 kDa
Observed band size: 130 kDa



Immunohistochemistry-Anti-Integrin β1 pAb

Immunohistochemical analysis of paraffin-embedded human bladder cancer using anti-Integrin β1 Rabbit Antibody at 1:500 dilution. Perform heat mediated antigen retrieval with Tris-EDTA buffer pH 9.0

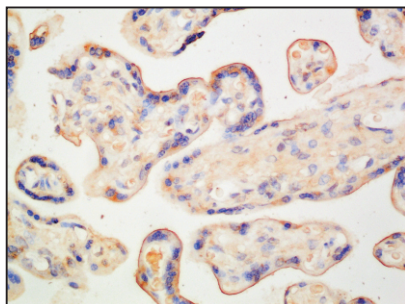
Anti-Integrin $\beta 1$ Rabbit pAb



WL01615

For Research Use Only. Not For Use In Diagnostic Procedures

Product Information



Immunohistochemistry-Anti-Integrin $\beta 1$ pAb

Immunohistochemical analysis of paraffin-embedded human eclampsia placenta using anti-Integrin $\beta 1$ Rabbit Antibody at 1:500 dilution.

Perform heat mediated antigen retrieval with Tris-EDTA buffer pH 9.0