

Anti-GRB2 Rabbit pAb



WL03475

For Research Use Only. Not For Use In Diagnostic Procedures

Product Information

Product name	Anti-GRB2 Rabbit pAb	
Source	Rabbit	
Species reactivity	Human, Mouse, Rat	
Tested applications	WB	1:500-1:1000
	IHC	1:150-1:300
	IF	1:500
Cellular localization	Cytoplasm, Endosome, Golgi apparatus, Nucleus.	
Pack size	50/100/200/500/1000μl	
Storage	Store at -20°C. Avoid freeze/thaw cycles.	
Storage buffer	Supplied in 20 mM phosphate (pH 7.5), 150 mM NaCl, 100 μg/ml	
	BSA, 50% glycerol and less than 0.02% sodium azide	

General Information

Background	Growth factor receptor-binding protein 2 (GRB2) is a adaptor protein that is involved in RTK signal transduction. This gene is similar to the Sem5 gene of C.elegans, which is involved in the signal transduction pathway. This protein binds the epidermal growth factor receptor and contains one SH2 domain and two SH3 domains. The SH2 domain of GRB2 binds to tyrosine phosphorylated proteins such as EGFR, IRS-1, Shc and Gab1. The SH3 domain of GRB2 associates with Sos, which stimulates the GTP binding activity of Ras, leading to the activation of the MAP kinase and other signaling pathways.
Immunogen	Polyclonal antibody is produced by immunizing animals with a synthetic peptide of GRB2.
Purification	Polyclonal antibody was purified by immunogen affinity chromatography.

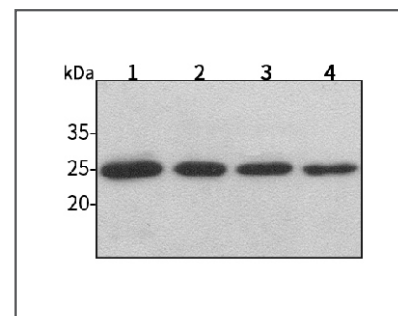
Anti-GRB2 Rabbit pAb



WL03475

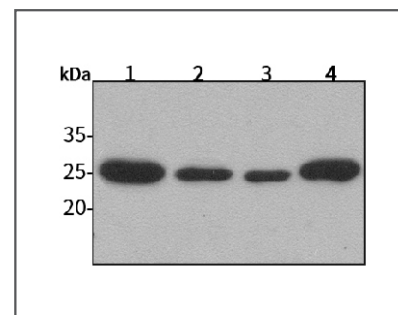
For Research Use Only. Not For Use In Diagnostic Procedures

Product Images



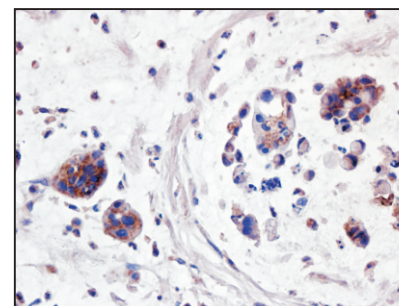
Western blot-Anti-GRB2 pAb

Lane 1: Human HepG2 cell lysate
 Lane 2: Human Hela cell lysate
 Lane 3: HumanBGC-823 cell lysate
 Lane 4: Human MGC-803 cell lysate
 All lanes: Anti-GRB2 at 1:1000 dilution
 Lysates/proteins at 20-50 μg per lane.
 Predicted band size: 25 kDa
 Observed band size: 25 kDa



Western blot-Anti-GRB2 pAb

Lane 1: Mouse kidney tissue lysate
 Lane 2: Mouse heart tissue lysate
 Lane 3: Rat liver tissue lysate
 Lane 4: Rat lung tissue lysate
 All lanes: Anti-GRB2 at 1:1000 dilution
 Lysates/proteins at 20-50 μg per lane.
 Predicted band size: 25 kDa
 Observed band size: 25 kDa



Immunohistochemistry-Anti-GRB2 pAb

Immunohistochemical analysis of paraffin-embedded human colon cancer using anti-GRB2 Rabbit Antibody at 1:150 dilution.
 Perform heat mediated antigen retrieval with Tris-EDTA buffer pH 9.0

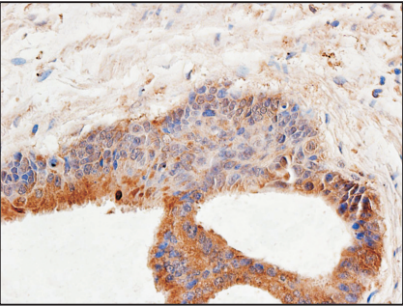
Anti-GRB2 Rabbit pAb



WL03475

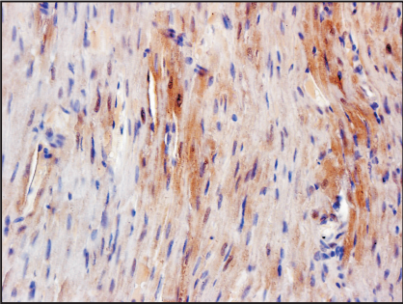
For Research Use Only. Not For Use In Diagnostic Procedures

Product Information



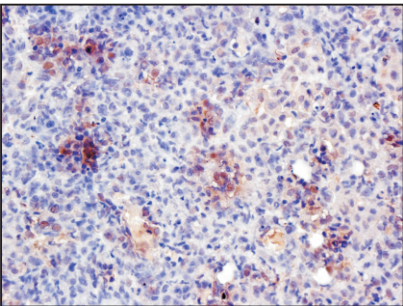
Immunohistochemistry-Anti-GRB2 pAb

Immunohistochemical analysis of paraffin-embedded human colon cancer using anti-GRB2 Rabbit Antibody at 1:150 dilution.
Perform heat mediated antigen retrieval with Tris-EDTA buffer pH 9.0



Immunohistochemistry-Anti-GRB2 pAb

Immunohistochemical analysis of paraffin-embedded rat heart using anti-GRB2 Rabbit Antibody at 1:150 dilution.
Perform heat mediated antigen retrieval with Tris-EDTA buffer pH 9.0



Immunohistochemistry-Anti-GRB2 pAb

Immunohistochemical analysis of paraffin-embedded rat lung using anti-GRB2 Rabbit Antibody at 1:150 dilution.
Perform heat mediated antigen retrieval with Tris-EDTA buffer pH 9.0

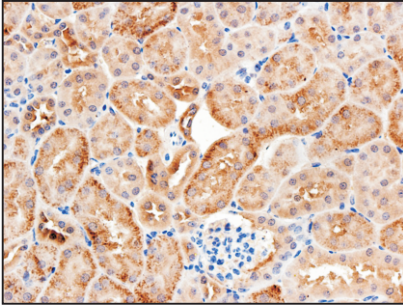
Anti-GRB2 Rabbit pAb



WL03475

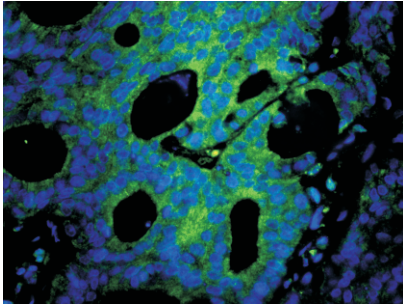
For Research Use Only. Not For Use In Diagnostic Procedures

Product Images



Immunohistochemistry-Anti-GRB2 pAb

Immunohistochemical analysis of paraffin-embedded rat kidney using anti-GRB2 Rabbit Antibody at 1:300 dilution.
Perform heat mediated antigen retrieval with Tris-EDTA buffer pH 9.0



Immunofluorescence-Anti-GRB2 pAb

Immunofluorescence analysis of paraffin-embedded human colon cancer using anti-GRB2 Rabbit Antibody at 1:500 dilution.
Perform heat mediated antigen retrieval with Tris-EDTA buffer pH 9.0