

Anti-NRF2 Rabbit pAb



WLH3846

For Research Use Only. Not For Use In Diagnostic Procedures

Product Information

Product name	Anti-NRF2 Rabbit pAb	
Source	Rabbit	
Species reactivity	Human, Mouse, Rat	
Tested applications	IHC	1:500
	IF	1:100-1:400
Cellular localization	Cytoplasm. Nucleus	
Pack size	50/100/200/500/1000µl	
Storage	Store at -20°C. Avoid freeze/thaw cycles.	
Storage buffer	Supplied in 20 mM phosphate (pH 7.5), 150 mM NaCl, 100 µg/ml	
	BSA, 50% glycerol and less than 0.02% sodium azide	

General Information

Background	The nuclear factor-like 2 (Nrf2) transcriptional activator binds antioxidant response elements (ARE) of target gene promoter regions to regulate expression of oxidative stress response genes. Under basal conditions, the Nrf2 inhibitor IκNrf2 (also called KEAP1) binds and retains Nrf2 in the cytoplasm where it can be targeted for ubiquitin-mediated degradation. Following oxidative or electrophilic stress, KEAP1 releases Nrf2, thereby allowing the activator to translocate to the nucleus and bind to ARE-containing genes. Altered expression of Nrf2 is associated with chronic obstructive pulmonary disease (COPD).
Immunogen	Polyclonal antibody is produced by immunizing animals with recombinant protein of NRF2.
Purification	Polyclonal antibody was purified by protein A affinity chromatography.

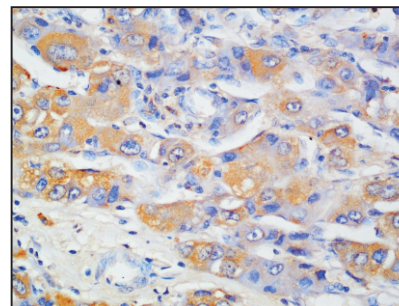
Anti-NRF2 Rabbit pAb



WLH3846

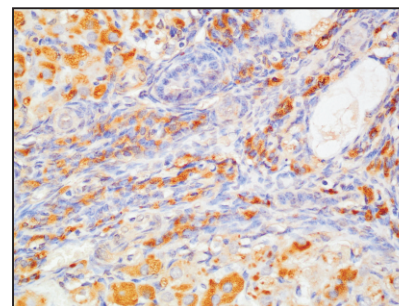
For Research Use Only. Not For Use In Diagnostic Procedures

Product Images



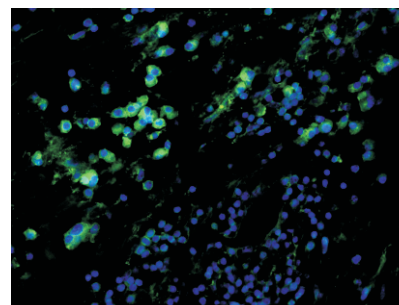
Immunohistochemistry-Anti-NRF2 pAb

Immunohistochemical analysis of paraffin-embedded human liver cancer using anti-NRF2 Rabbit Antibody at 1:500 dilution.
Perform heat mediated antigen retrieval with Tris-EDTA buffer pH 9.0



Immunohistochemistry-Anti-NRF2 pAb

Immunohistochemical analysis of paraffin-embedded rat ovary using anti-NRF2 Rabbit Antibody at 1:500 dilution.
Perform heat mediated antigen retrieval with Tris-EDTA buffer pH 9.0



Immunofluorescence-Anti-NRF2 pAb

Immunofluorescence analysis of paraffin-embedded human kidney cancer using anti-NRF2 Rabbit Antibody at 1:200 dilution.
Perform heat mediated antigen retrieval with Tris-EDTA buffer pH 9.0

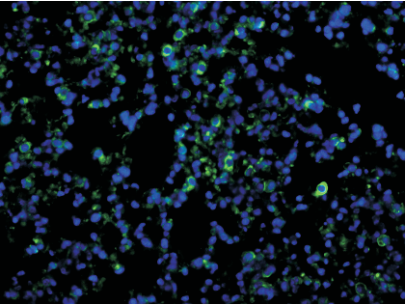
Anti-NRF2 Rabbit pAb



For Research Use Only. Not For Use In Diagnostic Procedures

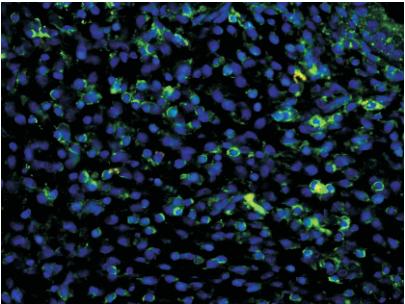
WLH3846

Product Information



Immunofluorescence-Anti-NRF2 pAb

Immunofluorescence analysis of paraffin-embedded mouse lung using anti-NRF2 Rabbit Antibody at 1:200 dilution.
Perform heat mediated antigen retrieval with Tris-EDTA buffer pH 9.0



Immunofluorescence-Anti-NRF2 pAb

Immunofluorescence analysis of paraffin-embedded rat uterus using anti-NRF2 Rabbit Antibody at 1:200 dilution.
Perform heat mediated antigen retrieval with Tris-EDTA buffer pH 9.0